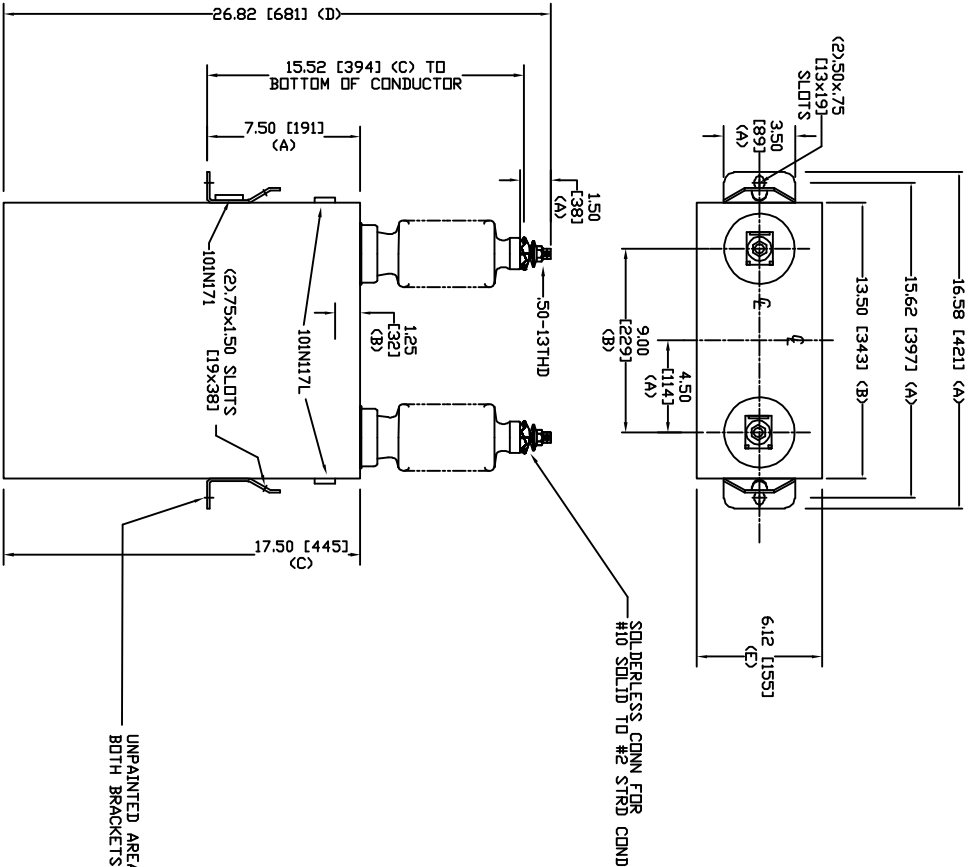


SIZE	DWG. NO.	SHT	REV
A	S9L109WC10	2	0
REV	DESCRIPTION	DATE	APPROVED
0	New	3/10/2006	



TOL	In.	mm
A	.06	1.5
B	.12	3.0
C	.18	4.6
D	.25	6.4
E	+.5/-1	+13/-25

8320 V 1 PH 95 KV/BIL  
 300 KVAR 60 Hz  
 CAT. S9L109WC10  
 2.33 GAL  
 MFG DATE  
 101N171 READ GEH-2743

<b>INDUSTRIAL SYSTEMS</b> FORT EDWARD, N.Y., U.S.A.		SIZE	A	WEIGHT	64.9 lbs 29.5 kg	<b>OUTLINE</b> S9L109WC10	
DRAWN	ACAD VBA	DATE	9/27/2007	SCALE		SHEET	2
ISSUED	RAH	DATE	9/27/2007			CGNT	3