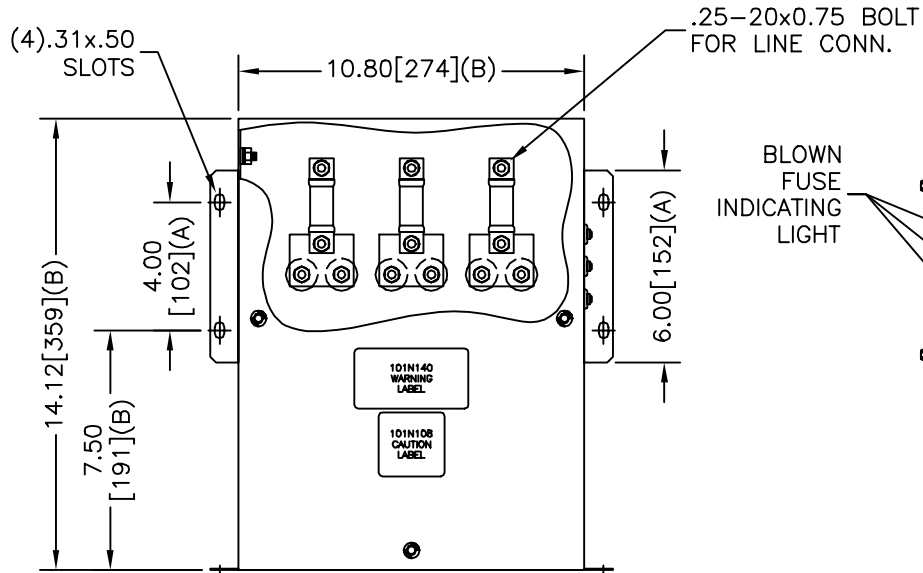
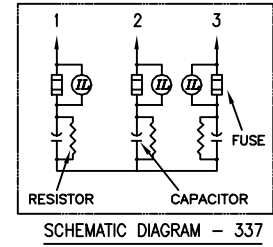
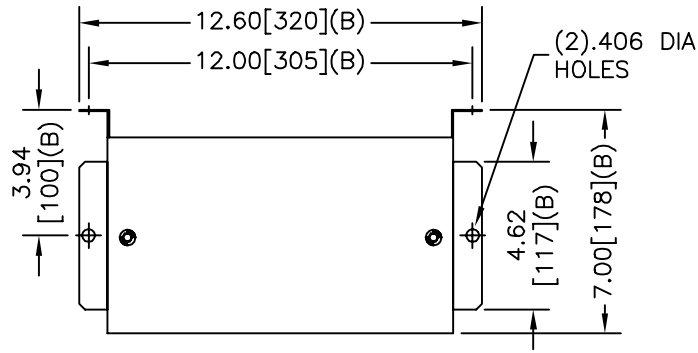
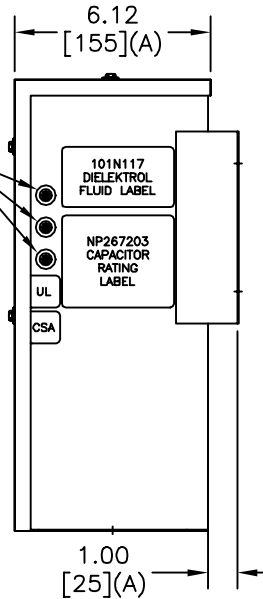


SIZE A	DWG NO 65L818TK2	SHT 2	REV
REV	DESCRIPTION	DATE	APPROVED



BLOWN FUSE INDICATING LIGHT



**GE CAPACITOR**

WITH INTERNAL DISCHARGE RESISTORS

CAT 65L818TK2 SN  
32.5 KVAR 600V 60HZ 3PH

CONTAINS 0.22 GAL. COMBUSTIBLE LIQUID WITH LESS THAN ONE PART PER MILLION PCB ON MFG DATE MM/YYYY  
CAUTION! BEFORE INSTALLING OR OPERATING READ GEH- 2738

NP267203 FORT EDWARD, N.Y. MADE IN U.S.A.

TOL	+/-
A	.06
B	.12
C	.18
D	.25

**INDUSTRIAL SYSTEMS  
FORT EDWARD, N.Y., U.S.A.**

DRAWN	B.Ross	DATE	5/13/2003
ISSUED		DATE	5/14/2003

SIZE  
**A**

SCALE

**OUTLINE  
65L818TK2**

SHEET 2 CONT ON -

DISTR. TO