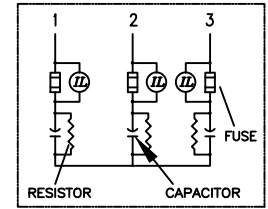
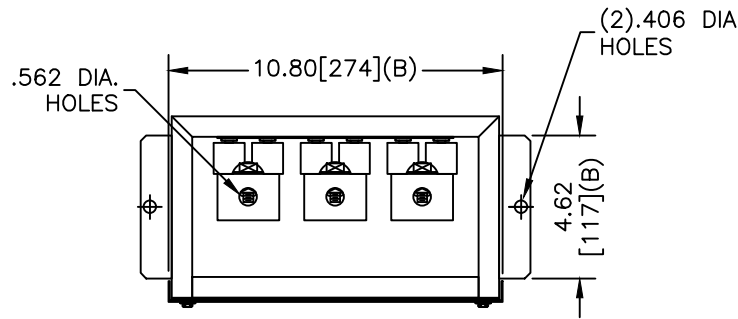
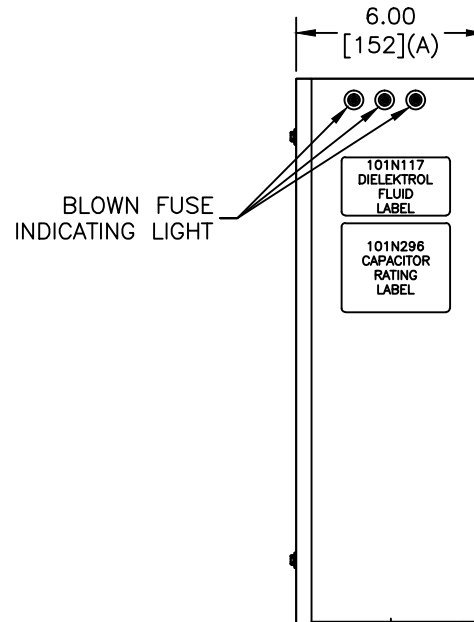
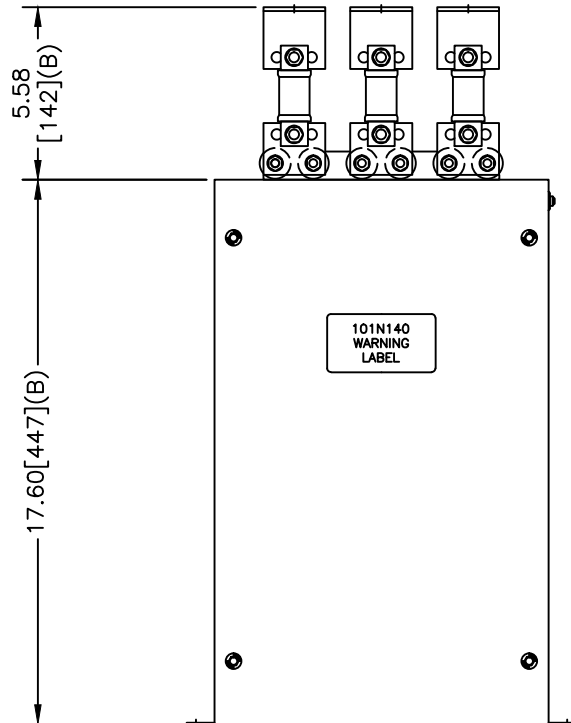
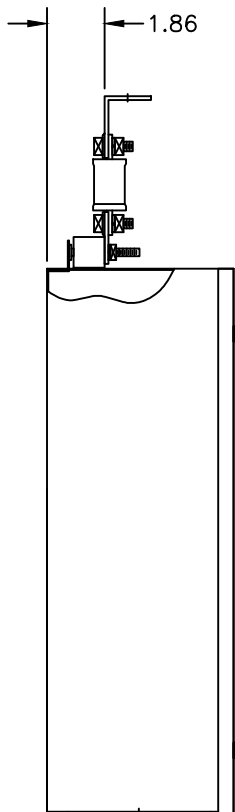


| | | | |
|-----------|-----------------------|------------------|-----------------|
| SIZE A | DWG NO 65L892TE2 | SHT 2 | REV 1 |
| REV 1 | DESCRIPTION Chg NP | DATE 4/3/2013 | APPROVED BTR |



SCHEMATIC DIAGRAM - 337



POWER FACTOR CORRECTION
WITH INTERNAL DISCHARGE RESISTORS
CAT. 65L892TE2
75KVAR 480V 60HZ 3PH

CONTAINS 0.31 GAL. COMBUSTIBLE LIQUID WITH LESS THAN
ONE PART PER MILLION PCB ON MFG DATE MM/YYYY
CAUTION! BEFORE INSTALLING OR OPERATING READ GEH-2738

101N296 MADE IN USA

| | |
|-----|-----|
| TOL | +/- |
| A | .06 |
| B | .12 |
| C | .18 |
| D | .25 |

| | |
|---|----------------|
| GE ENERGY FORT EDWARD, N.Y., U.S.A. | |
| DRAWN | DATE 10/9/1993 |
| ISSUED | DATE |

| | |
|-----------|------------------------|
| SIZE A | Est. Wiegth 34 Lbs. |
| SCALE | |

| | |
|----------------------|-----------|
| OUTLINE 65L892TE2 | |
| SHEET 2 | CONT ON - |

DISTR. TO