

4

3

2

C

SIZE DWG NO.

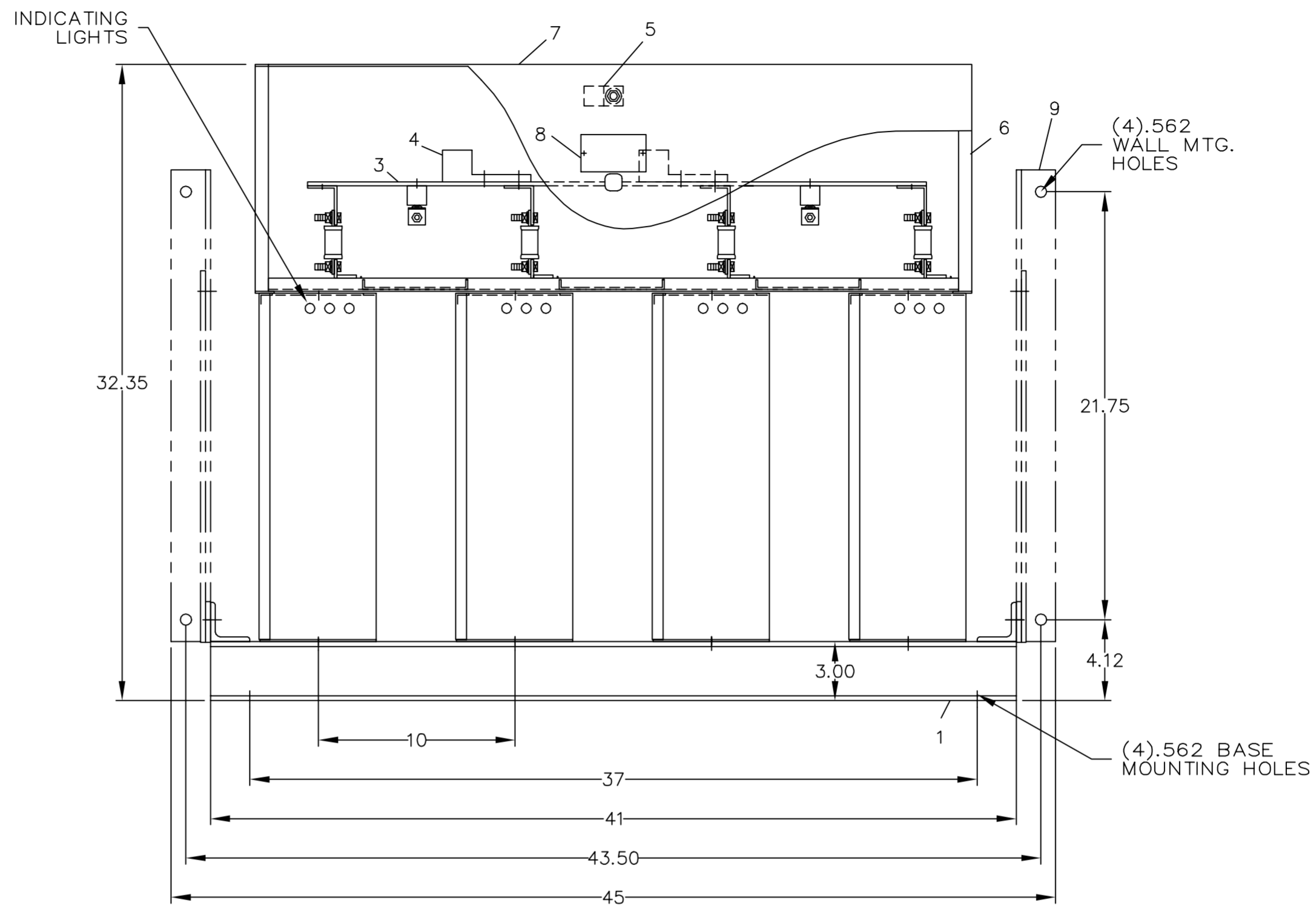
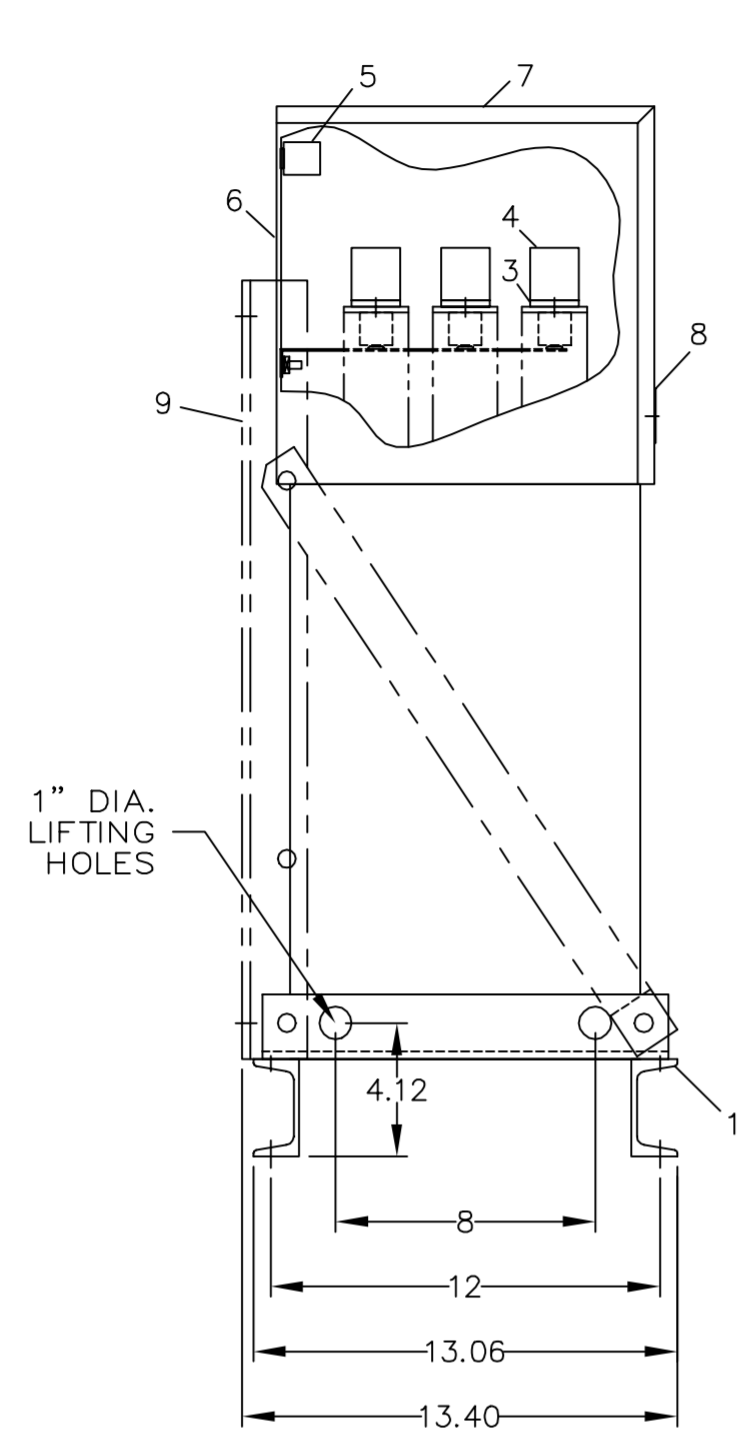
65L929TK2

SHT 1

REV 1

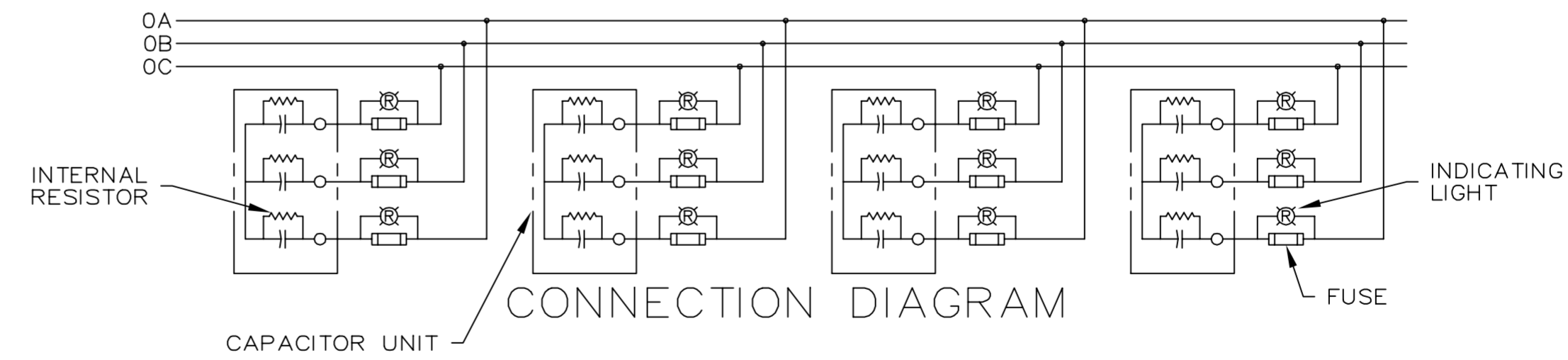
1

| REVISIONS | | | |
|-----------|-------------------|------|----------|
| REV | DESCRIPTION | DATE | APPROVED |
| 1 | UPDATE TO AUTOCAD | | EJM |



NOMENCLATURE

- 1. ALUMINUM BASE FRAME
- 2. CAPACITOR UNIT
- 3. COPPER BUS BARS
- 4. LINE TERMINAL - #4/0 TO 600 MCM
- 5. GROUND TERMINAL - #6AWG TO 250 MCM
- 6. BUS ENCLOSURE
- 7. ACCESS COVER
- 8. RATING NAMEPLATE
- 9. OPTIONAL FIELD ASSEMBLED WALL MTG. FRAME



CAT 65L929TK2 SERNO
 KVAR 240 60Hz 3ph
 VOLT 600 DIAG 186C3233GA
 CONN Y-CONN
 Read instructions: GEH-2728

| | | | | |
|-----------------|--------|----------|-------------------|---|
| SIGNATURES | | DATE | | INDUSTRIAL SYSTEMS FORT EDWARD, N.Y., U.S.A. |
| DRAWN E.McGINN | | 9/29/93 | | |
| CHECKED | | | | |
| ENGR | | | | |
| ISSUED | | 9/30/93 | | OUTLINE 65L929TK2 |
| FIRST MADE FOR: | | | | 413 DISTR TO |
| CAD SYS. NO. | SIZE C | FSCM NO. | DWG NO. 65L929TK2 | |
| AUTOCAD | SCALE | SHEET 1 | CONT ON SHT - | |

4

3

2

1