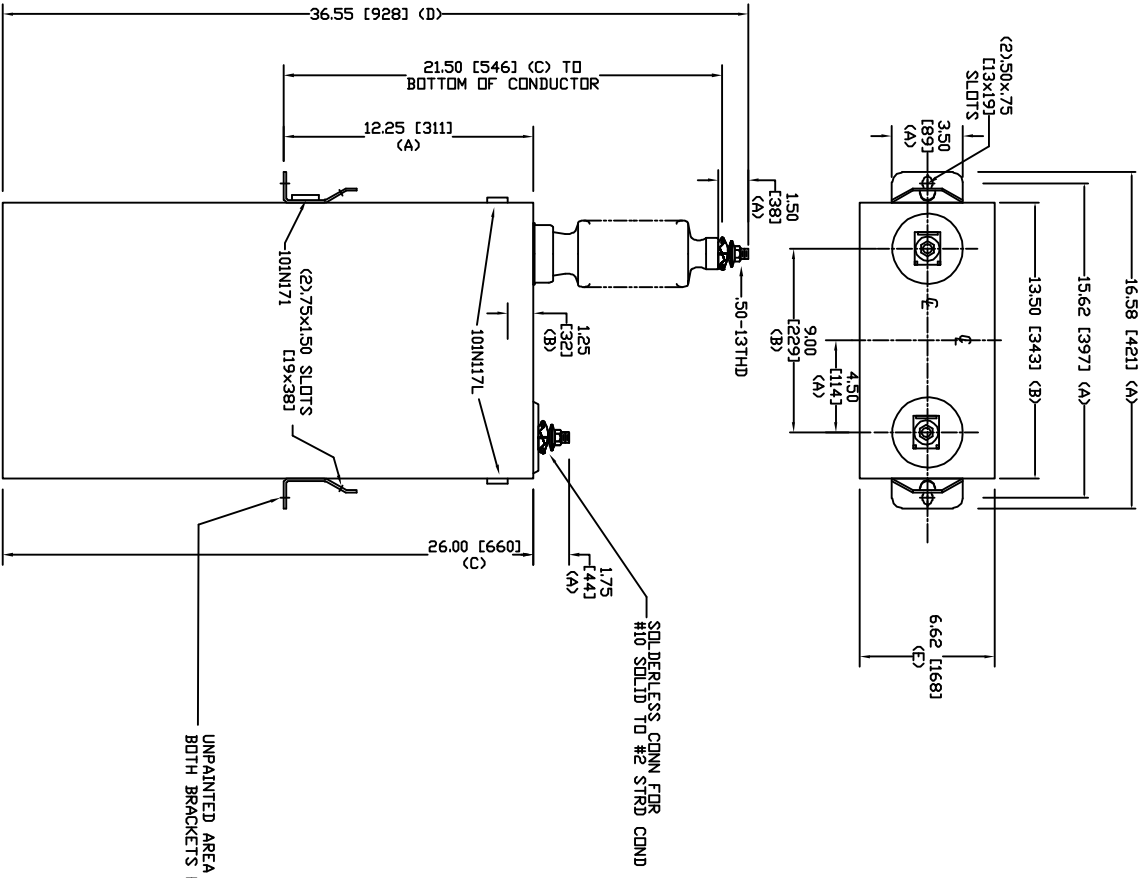


SIZE	DWG NO	SHT	REV
A	98L555WC10	2	0
REV	DESCRIPTION	DATE	APPROVED
0	New	2/22/2006	




TOL	In.	mm
A	.06	1.5
B	.12	3.0
C	.18	4.6
D	.25	6.4
E	+.5/-1	+13/-25

19920 V 1 PH 150 KV/BIL
 500 KVAR
 CAT. 98L555WC10
 3.74 GAL
 MFG DATE
 101N171 READ GEH-2743

UNPAINTED AREA UNDER BOTH BRACKETS FOR GROUNDING

SOLDERLESS CONN FOR COND #10 SOLDER TO #2 STRD


GE ENERGY
FORT EDWARD, N.Y., U.S.A.

DRAWN	ACAD VBA	DATE	9/18/2009
ISSUED	RAH	DATE	9/18/2009

SIZE **A** WEIGHT 104.3 lbs 47.4 kg
 SCALE
OUTLINE
98L555WC10

SHEET	2	CGNT	3
-------	---	------	---