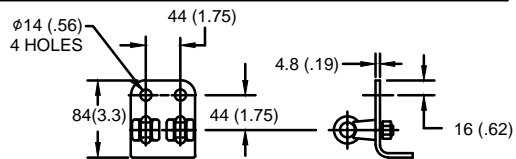


SIZE A	DWG NO 911XPA003AS	SHT 1	REV
REV	DESCRIPTION	DATE	APPROVED

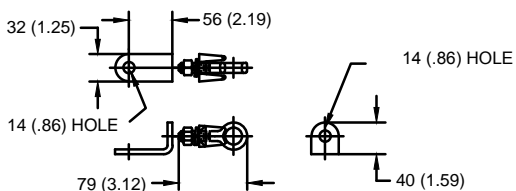
GE Tranquell® 2.55 kV MCOV

LINE TERMINAL DETAIL

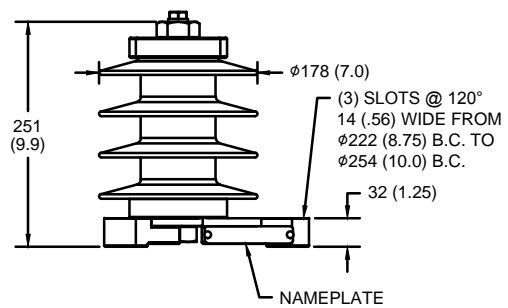


HDG 4-HOLE TERMINAL PAD,
TWO HDG TERMINALS,
SUITABLE FOR Cu OR Al CONDUCTOR SIZE
φ 7 (.25) - φ 21 (.81) DIA
25 - 240 sq mm
AWG#4 - 500 MCM

GROUND TERMINAL DETAIL



HDG TERMINAL BRACKET
ONE HDG TERMINAL
SUITABLE FOR Cu OR Al CONDUCTOR SIZE
φ 7 (.25) - φ 21 (.81) DIA
25 - 240 sq mm
AWG#4 - 500 MCM



CHARACTERISTICS	
RATED VOLTAGE	3 kVrms
MCOV	2.55 kVrms
MASS	5.7 kg (12.6 lb)
COG ABOVE BASE	127 (5)
CREEPAGE DISTANCE	498 (19.6)
STRIKE DISTANCE	175 (6.9)
LIGHTNING IMP W/S	101 kVpk
SWITCHING IMP WET W/S	84 kVpk
POWER FREQ WET W/S	50 kVrms
TOV 1s NO PRIOR DUTY	3.62 kVrms
TOV 10s NO PRIOR DUTY	3.47 kVrms
TOV 1s W/PRIOR DUTY	3.51 kVrms
TOV 10s W/PRIOR DUTY	3.37 kVrms

CANTILEVER FORCE	
MAXIMUM CONTINUOUS	3383 N (761 lbs)
ULTIMATE (max pk)	6766 N (1521 lbs)

RECOMMENDED CLEARANCE (CENTER - CENTER)	
PHASE TO GROUND	114 (1)
PHASE TO PHASE	229 (2)

- NOTES:
1. DIMENSIONS IN millimeters(inches) SUBJECT TO ±3% TOLERANCE
2. CLEARANCE AND INSULATION W/S VOLTAGE APPLY AT SEA LEVEL
3. ARRESTER SUITABLE FOR OPERATION AT ALTITUDES UP TO 4380 m (14370 ft)
4. PACKAGED IN A CORRUGATED BOX.

.5μSEC 10kA IR kV	SWITCHING SURGE IR kV		MAXIMUM 8/20 DISCHARGE VOLTAGE - kV AT					
	500 A	1 KA	1.5 kA	3.0 kA	5 kA	10 kA	20 kA	40 kA
10.5	6.01	6.26	6.41	6.74	7.06	7.58	8.19	9.34

GE ENERGY
FORT EDWARD, N.Y., U.S.A.

DRAWN	DCS	DATE	1/5/2015
ISSUED		DATE	1/5/2015

SIZE
A

ANSI/IEEE C62.11
STATION CLASS

SCALE

ARRESTER 9L11XPA003AS

SHEET 1 CONT ON -

DISTR. TO