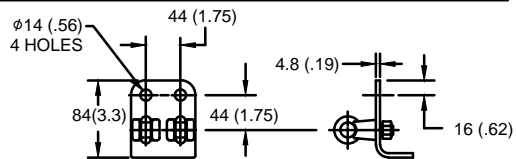


SIZE A	DWG NO 911XPA024AS	SHT 1	REV
REV	DESCRIPTION	DATE	APPROVED

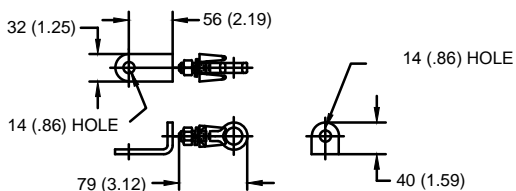
# GE Tranquell® 19.5 kV MCOV

### LINE TERMINAL DETAIL

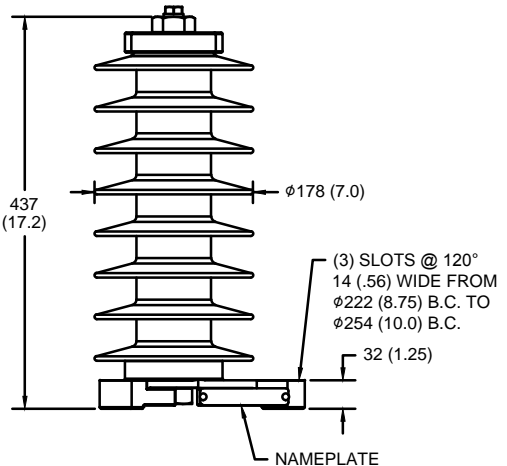


HDG 4-HOLE TERMINAL PAD,  
TWO HDG TERMINALS,  
SUITABLE FOR Cu OR Al CONDUCTOR SIZE  
φ 7 (.25) - φ 21 (.81) DIA  
25 - 240 sq mm  
AWG#4 - 500 MCM

### GROUND TERMINAL DETAIL



HDG TERMINAL BRACKET  
ONE HDG TERMINAL  
SUITABLE FOR Cu OR Al CONDUCTOR SIZE  
φ 7 (.25) - φ 21 (.81) DIA  
25 - 240 sq mm  
AWG#4 - 500 MCM



### CHARACTERISTICS

RATED VOLTAGE	24 kVrms
MCOV	19.5 kVrms
MASS	9.9 kg (21.9 lb)
COG ABOVE BASE	218 (8.6)
CREEPAGE DISTANCE	1029 (40.5)
STRIKE DISTANCE	361 (14.2)
LIGHTNING IMP W/S	207 kVpk
SWITCHING IMP WET W/S	173 kVpk
POWER FREQ WET W/S	101 kVrms
TOV 1s NO PRIOR DUTY	27.7 kVrms
TOV 10s NO PRIOR DUTY	26.5 kVrms
TOV 1s W/PRIOR DUTY	26.8 kVrms
TOV 10s W/PRIOR DUTY	25.7 kVrms

### CANTILEVER FORCE

MAXIMUM CONTINUOUS	2173 N (489 lbs)
ULTIMATE (max pk)	4346 N (977 lbs)

### RECOMMENDED CLEARANCE (CENTER - CENTER)

PHASE TO GROUND	188 (7.40)
PHASE TO PHASE	307 (12.09)

NOTES:  
1. DIMENSIONS IN millimeters(inches) SUBJECT TO ±3% TOLERANCE  
2. CLEARANCE AND INSULATION W/S VOLTAGE APPLY AT SEA LEVEL  
3. ARRESTER SUITABLE FOR OPERATION AT ALTITUDES UP TO 4380 m (14370 ft)  
4. PACKAGED IN A CORRUGATED BOX.

.5μSEC 10kA IR kV	SWITCHING SURGE IR kV		MAXIMUM 8/20 DISCHARGE VOLTAGE - kV AT					
	500 A	1 KA	1.5 kA	3.0 kA	5 kA	10 kA	20 kA	40 kA
65.7	45.95	47.86	49.02	51.51	54.00	57.94	62.64	71.45

**GE ENERGY**  
FORT EDWARD, N.Y., U.S.A.

DRAWN	DCS	DATE	11/20/2014
ISSUED		DATE	11/20/2014

SIZE  
**A**

ANSI/IEEE C62.11  
STATION CLASS

SCALE

# ARRESTER 9L11XPA024AS

SHEET 1 CONT ON -

DISTR. TO