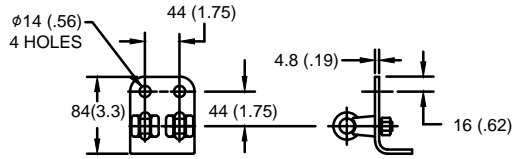


SIZE A	DWG NO 911XPA144AS	SHT 1	REV
REV	DESCRIPTION	DATE	APPROVED

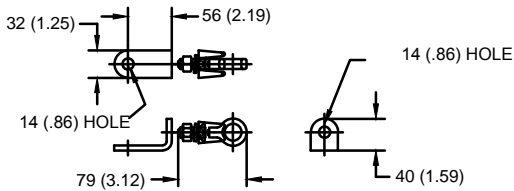
GE Tranquell® 115 kV MCOV

LINE TERMINAL DETAIL



HDG 4-HOLE TERMINAL PAD, PART No. 274914-4002
TWO HDG TERMINALS, PART No. 271414-3001
SUITABLE FOR Cu OR Al CONDUCTOR SIZE
 ϕ 7 (.25) - ϕ 21 (.81) DIA
25 - 240 sq mm
AWG#4 - 500 MCM

GROUND TERMINAL DETAIL



HDG TERMINAL BRACKET, PART No. 89606-4001
ONE HDG TERMINAL, PART No. 271414-3001
SUITABLE FOR Cu OR Al CONDUCTOR SIZE
 ϕ 7 (.25) - ϕ 21 (.81) DIA
25 - 240 sq mm
AWG#4 - 500 MCM

CHARACTERISTICS

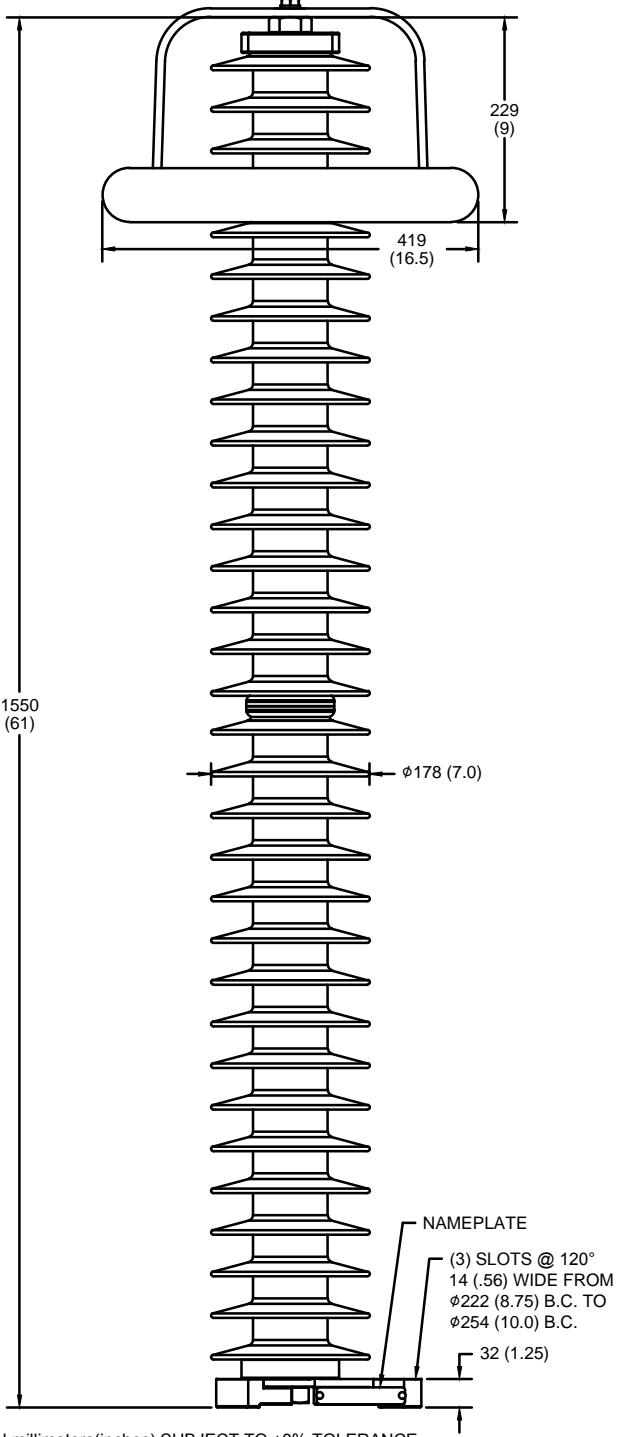
RATED VOLTAGE	144 kVrms
MCOV	115 kVrms
MASS	37.2 kg (82.1 lb)
COG ABOVE BASE	808 (31.8)
CREEPAGE DISTANCE	4185 (164.8)
STRIKE DISTANCE	1321 (52)
LIGHTNING IMP W/S	758 kVpk
SWITCHING IMP WET W/S	635 kVpk
POWER FREQ WET W/S	320 kVrms
TOV 1s NO PRIOR DUTY	166 kVrms
TOV 10s NO PRIOR DUTY	159 kVrms
TOV 1s W/PRIOR DUTY	160 kVrms
TOV 10s W/PRIOR DUTY	154 kVrms

CANTILEVER FORCE

MAXIMUM CONTINUOUS	692 N (156 lbs)
ULTIMATE (max pk)	1384 N (311 lbs)

RECOMMENDED CLEARANCE (CENTER - CENTER)

PHASE TO GROUND	849.7 (33.5)
PHASE TO PHASE	1059 (41.7)



NOTES:
1. DIMENSIONS IN millimeters(inches) SUBJECT TO \pm 3% TOLERANCE
3. ARRESTER SUITABLE FOR OPERATION AT ALTITUDES UP TO 4380 m (14370 ft)

.5 μ SEC 10kA IR kV	SWITCHING SURGE IR kV		MAXIMUM 8/20 DISCHARGE VOLTAGE - kV AT					
	500 A	1 KA	1.5 kA	3.0 kA	5 kA	10 kA	20 kA	40 kA
382	275	286	293	308	323	346	375	427

GE ENERGY
FORT EDWARD, N.Y., U.S.A.

DRAWN **DCS** DATE **9/15/2014**

ISSUED DATE **9/15/2014**

SIZE
A

ANSI/IEEE C62.11
STATION CLASS

SCALE

ARRESTER 9L11XPA144AS

SHEET **1** CONT ON **-**

DISTR. TO