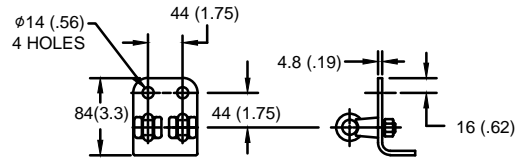


SIZE A	DWG NO 911XPA168AS	SHT 1	REV
REV	DESCRIPTION	DATE	APPROVED

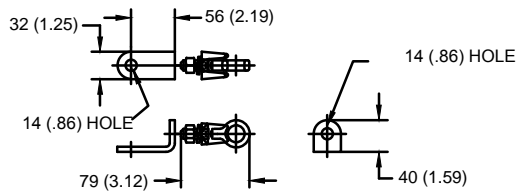
GE Tranquell® 131 kV MCOV

LINE TERMINAL DETAIL



HDG 4-HOLE TERMINAL PAD, PART No. 274914-4002
TWO HDG TERMINALS, PART No. 271414-3001
SUITABLE FOR Cu OR Al CONDUCTOR SIZE
 ϕ 7 (.25) - ϕ 21 (.81) DIA
25 - 240 sq mm
AWG#4 - 500 MCM

GROUND TERMINAL DETAIL

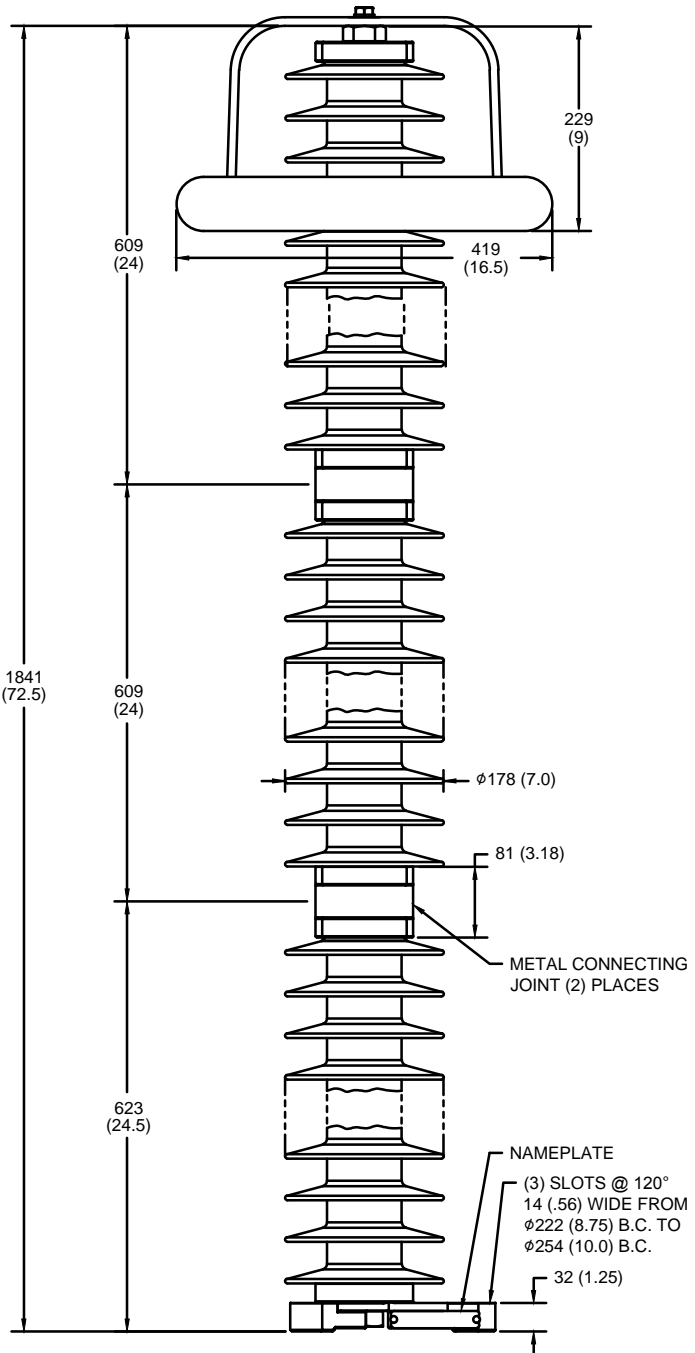


HDG TERMINAL BRACKET, PART No. 89606-4001
ONE HDG TERMINAL, PART No. 271414-3001
SUITABLE FOR Cu OR Al CONDUCTOR SIZE
 ϕ 7 (.25) - ϕ 21 (.81) DIA
25 - 240 sq mm
AWG#4 - 500 MCM

CHARACTERISTICS	
RATED VOLTAGE	168 kVrms
MCOV	131 kVrms
MASS	44 kg (97 lb)
COG ABOVE BASE	956 (37.6)
CREEPAGE DISTANCE	4686 (184.5)
STRIKE DISTANCE	1612 (63.5)
LIGHTNING IMP W/S	926 kVpk
SWITCHING IMP WET W/S	776 kVpk
POWER FREQ WET W/S	372 kVrms
TOV 1s NO PRIOR DUTY	194 kVrms
TOV 10s NO PRIOR DUTY	185 kVrms
TOV 1s W/PRIOR DUTY	187 kVrms
TOV 10s W/PRIOR DUTY	180 kVrms

CANTILEVER FORCE	
MAXIMUM CONTINUOUS	294 N (66 lbs)
ULTIMATE (max pk)	1175 N (264 lbs)

RECOMMENDED CLEARANCE (CENTER - CENTER)	
PHASE TO GROUND	1212 (47.47)
PHASE TO PHASE	1567 (61.69)



- NOTES:
2. CLEARANCE AND INSULATION W/S VOLTAGE APPLY AT SEA LEVEL
4. PACKAGED IN A WOOD CRATE.

.5μSEC 10kA IR kV	SWITCHING SURGE IR kV		MAXIMUM 8/20 DISCHARGE VOLTAGE - kV AT					
	500 A	1 KA	1.5 kA	3.0 kA	5 kA	10 kA	20 kA	40 kA
447	321	334	342	360	377	405	438	499

GE ENERGY
FORT EDWARD, N.Y., U.S.A.

SIZE
A
ANSI/IEEE C62.11
STATION CLASS

ARRESTER 9L11XPA168AS

DRAWN	DCS	DATE	9/15/2014
ISSUED		DATE	9/15/2014

SCALE		SHEET	1	CONT ON	-
-------	--	-------	---	---------	---

DISTR. TO