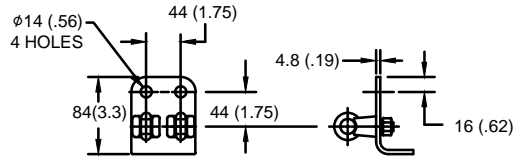


SIZE A	DWG NO 911XPA180AS	SHT 1	REV
REV	DESCRIPTION	DATE	APPROVED

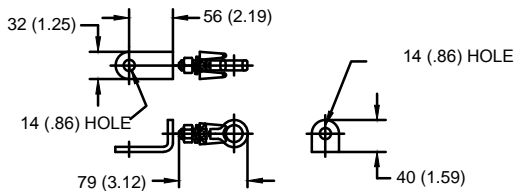
GE Tranquell® 144 kV MCOV

LINE TERMINAL DETAIL



HDG 4-HOLE TERMINAL PAD, PART No. 274914-4002
 TWO HDG TERMINALS, PART No. 271414-3001
 SUITABLE FOR Cu OR Al CONDUCTOR SIZE
 φ 7 (.25) - φ 21 (.81) DIA
 25 - 240 sq mm
 AWG#4 - 500 MCM

GROUND TERMINAL DETAIL



HDG TERMINAL BRACKET, PART No. 89606-4001
 ONE HDG TERMINAL, PART No. 271414-3001
 SUITABLE FOR Cu OR Al CONDUCTOR SIZE
 φ 7 (.25) - φ 21 (.81) DIA
 25 - 240 sq mm
 AWG#4 - 500 MCM

CHARACTERISTICS

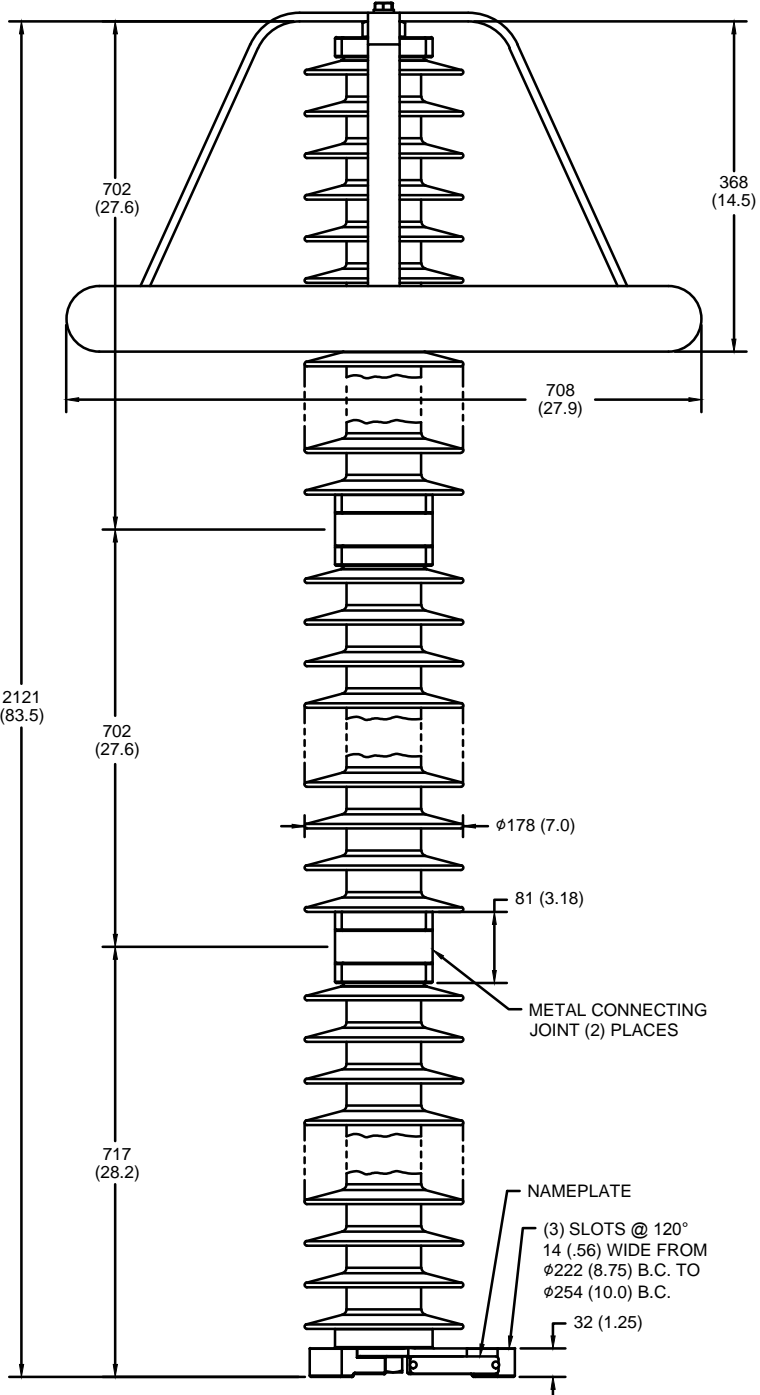
RATED VOLTAGE	180 kVrms
MCOV	144 kVrms
MASS	54.6 kg (120 lb)
COG ABOVE BASE	1139 (44.8)
CREEPAGE DISTANCE	5482 (215.8)
STRIKE DISTANCE	1753 (69)
LIGHTNING IMP W/S	1006 kVpk
SWITCHING IMP WET W/S	843 kVpk
POWER FREQ WET W/S	395 kVrms
TOV 1s NO PRIOR DUTY	207 kVrms
TOV 10s NO PRIOR DUTY	198 kVrms
TOV 1s W/PRIOR DUTY	200 kVrms
TOV 10s W/PRIOR DUTY	192 kVrms

CANTILEVER FORCE

MAXIMUM CONTINUOUS	256 N (58 lbs)
ULTIMATE (max pk)	1025 N (230 lbs)

RECOMMENDED CLEARANCE (CENTER - CENTER)

PHASE TO GROUND	1585 (62.4)
PHASE TO PHASE	1938 (76.3)



NOTES:
 1. DIMENSIONS IN millimeters(inches) SUBJECT TO ±3% TOLERANCE
 2. CLEARANCE AND INSULATION W/S VOLTAGE APPLY AT SEA LEVEL
 4. PACKAGED IN A WOOD CRATE.

.5μSEC 10kA IR kV	SWITCHING SURGE IR kV		MAXIMUM 8/20 DISCHARGE VOLTAGE - kV AT					
	500 A	1 KA	1.5 kA	3.0 kA	5 kA	10 kA	20 kA	40 kA
480	343	357	366	385	403	433	468	534

GE ENERGY
 FORT EDWARD, N.Y., U.S.A.

SIZE
A
 ANSI/IEEE C62.11
 STATION CLASS

ARRESTER 9L11XPA180AS

DRAWN **DCS** DATE **9/15/2014**
 ISSUED DATE **9/15/2014**

SCALE SHEET **1** CONT **ON**

DISTR. TO