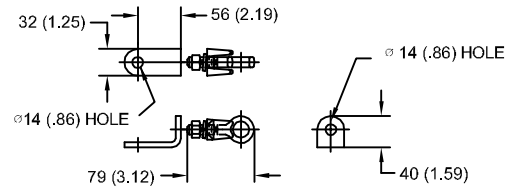


| | | | |
|-----------|-----------------------|----------|----------|
| SIZE A | DWG NO 911XPB024AS | SHT 1 | REV |
| REV | DESCRIPTION | DATE | APPROVED |
| | | | |

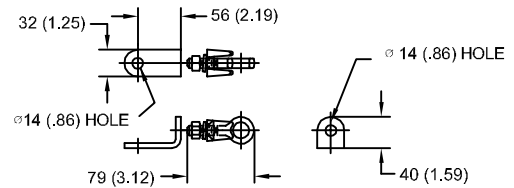
19.5 kV MCOV

LINE TERMINAL DETAIL

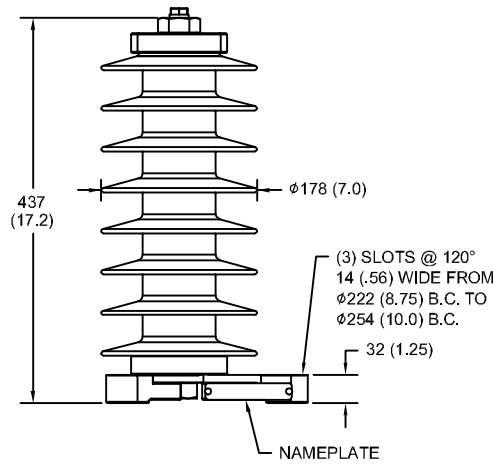


HDG TERMINAL BRACKET
 ONE HDG TERMINAL
 SUITABLE FOR CU OR AL CONDUCTOR SIZE
 ϕ 7 (.25) - ϕ 21 (.81) DIA
 25 - 240 sq mm
 AWG#4 - 500 MCM

GROUND TERMINAL DETAIL



HDG TERMINAL BRACKET
 ONE HDG TERMINAL
 SUITABLE FOR CU OR AL CONDUCTOR SIZE
 ϕ 7 (.25) - ϕ 21 (.81) DIA
 25 - 240 sq mm
 AWG#4 - 500 MCM



| CHARACTERISTICS | |
|-----------------------|------------------|
| RATED VOLTAGE | 24 kVrms |
| MCOV | 19.5 kVrms |
| MASS | 9.9 kg (21.9 lb) |
| COG ABOVE BASE | 218 (8.6) |
| CREEPAGE DISTANCE | 1029 (40.5) |
| STRIKE DISTANCE | 361 (14.2) |
| LIGHTNING IMP W/S | 207 kVpk |
| SWITCHING IMP WET W/S | 173 kVpk |
| POWER FREQ WET W/S | 101 kVrms |
| TOV 1s NO PRIOR DUTY | 27.7 kVrms |
| TOV 10s NO PRIOR DUTY | 26.5 kVrms |
| TOV 1s W/PRIOR DUTY | 26.8 kVrms |
| TOV 10s W/PRIOR DUTY | 25.7 kVrms |

| CANTILEVER FORCE | |
|--------------------|------------------|
| MAXIMUM CONTINUOUS | 2173 N (489 lbs) |
| ULTIMATE (max pk) | 4346 N (977 lbs) |

| RECOMMENDED CLEARANCE (CENTER - CENTER) | |
|---|------------|
| PHASE TO GROUND | 188 (7.4) |
| PHASE TO PHASE | 307 (12.1) |

- NOTES:
 1. DIMENSIONS IN millimeters(inches) SUBJECT TO $\pm 3\%$ TOLERANCE
 2. CLEARANCE AND INSULATION W/S VOLTAGE APPLY AT SEA LEVEL
 3. ARRESTER SUITABLE FOR OPERATION AT ALTITUDES UP TO 1800 m (6000 ft)
 4. PACKAGED IN A CORRUGATED BOX.

| .5 μ SEC 10kA IR kV | SWITCHING SURGE IR kV | | MAXIMUM 8/20 DISCHARGE VOLTAGE - kV AT | | | | | |
|----------------------------|-----------------------|------|--|--------|------|-------|-------|-------|
| | 500 A | 1 KA | 1.5 kA | 3.0 kA | 5 kA | 10 kA | 20 kA | 40 kA |
| 65.7 | 45.9 | 47.9 | 49.0 | 51.5 | 54.0 | 57.9 | 62.6 | 71.4 |



GE ENERGY
 FORT EDWARD, N.Y., U.S.A.

SIZE
A

ANSI
 STATION CLASS

ARRESTER
 9L11XPB024AS

DRAWN JBC DATE 5/03/2011

ISSUED DATE 5/03/2011

SCALE

SHEET 1 CONT ON -

DISTR. TO