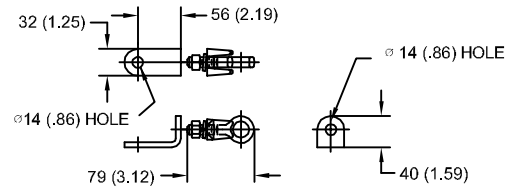


# 22 kV MCOV

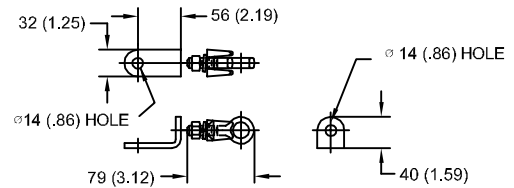
|           |                       |          |          |
|-----------|-----------------------|----------|----------|
| SIZE<br>A | DWG NO<br>911XPB027AS | SHT<br>1 | REV      |
| REV       | DESCRIPTION           | DATE     | APPROVED |
|           |                       |          |          |

### LINE TERMINAL DETAIL

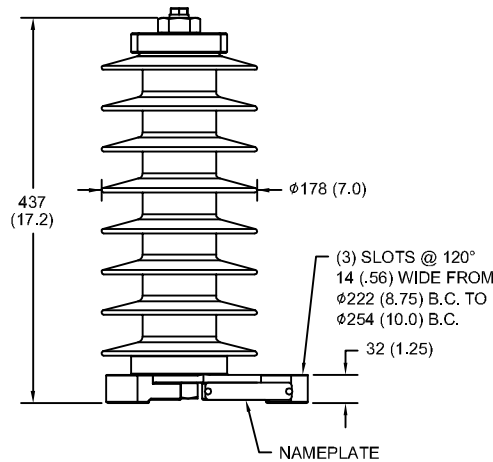


HDG TERMINAL BRACKET  
 ONE HDG TERMINAL  
 SUITABLE FOR CU OR AL CONDUCTOR SIZE  
 φ 7 (.25) - φ 21 (.81) DIA  
 25 - 240 sq mm  
 AWG#4 - 500 MCM

### GROUND TERMINAL DETAIL



HDG TERMINAL BRACKET  
 ONE HDG TERMINAL  
 SUITABLE FOR CU OR AL CONDUCTOR SIZE  
 φ 7 (.25) - φ 21 (.81) DIA  
 25 - 240 sq mm  
 AWG#4 - 500 MCM



### CHARACTERISTICS

|                       |                  |
|-----------------------|------------------|
| RATED VOLTAGE         | 27 kVrms         |
| MCOV                  | 22 kVrms         |
| MASS                  | 9.9 kg (21.9 lb) |
| COG ABOVE BASE        | 218 (8.6)        |
| CREEPAGE DISTANCE     | 1029 (40.5)      |
| STRIKE DISTANCE       | 361 (14.2)       |
| LIGHTNING IMP W/S     | 207 kVpk         |
| SWITCHING IMP WET W/S | 173 kVpk         |
| POWER FREQ WET W/S    | 101 kVrms        |
| TOV 1s NO PRIOR DUTY  | 31.3 kVrms       |
| TOV 10s NO PRIOR DUTY | 29.9 kVrms       |
| TOV 1s W/PRIOR DUTY   | 30.3 kVrms       |
| TOV 10s W/PRIOR DUTY  | 29.0 kVrms       |

### CANTILEVER FORCE

|                    |                  |
|--------------------|------------------|
| MAXIMUM CONTINUOUS | 2173 N (489 lbs) |
| ULTIMATE (max pk)  | 4346 N (977 lbs) |

### RECOMMENDED CLEARANCE (CENTER - CENTER)

|                 |            |
|-----------------|------------|
| PHASE TO GROUND | 208 (8.2)  |
| PHASE TO PHASE  | 328 (12.9) |

- NOTES:  
 1. DIMENSIONS IN millimeters(inches) SUBJECT TO ±3% TOLERANCE  
 2. CLEARANCE AND INSULATION W/S VOLTAGE APPLY AT SEA LEVEL  
 3. ARRESTER SUITABLE FOR OPERATION AT ALTITUDES UP TO 1800 m (6000 ft)  
 4. PACKAGED IN A CORRUGATED BOX.

| .5μSEC 10kA<br>IR kV | SWITCHING SURGE IR kV |      | MAXIMUM 8/20 DISCHARGE VOLTAGE - kV AT |        |      |       |       |       |
|----------------------|-----------------------|------|--|--------|------|-------|-------|-------|
|                      | 500 A                 | 1 KA | 1.5 kA                                 | 3.0 kA | 5 kA | 10 kA | 20 kA | 40 kA |
| 73.6                 | 51.8                  | 54.0 | 55.3                                   | 58.1   | 60.9 | 65.4  | 70.7  | 80.6  |



GE ENERGY  
 FORT EDWARD, N.Y., U.S.A.

SIZE  
**A**

ANSI  
 STATION CLASS

**ARRESTER**  
**9L11XPB027AS**

DRAWN JBC DATE 5/03/2011

ISSUED DATE 5/03/2011

SCALE

SHEET 1 CONT ON -

DISTR. TO