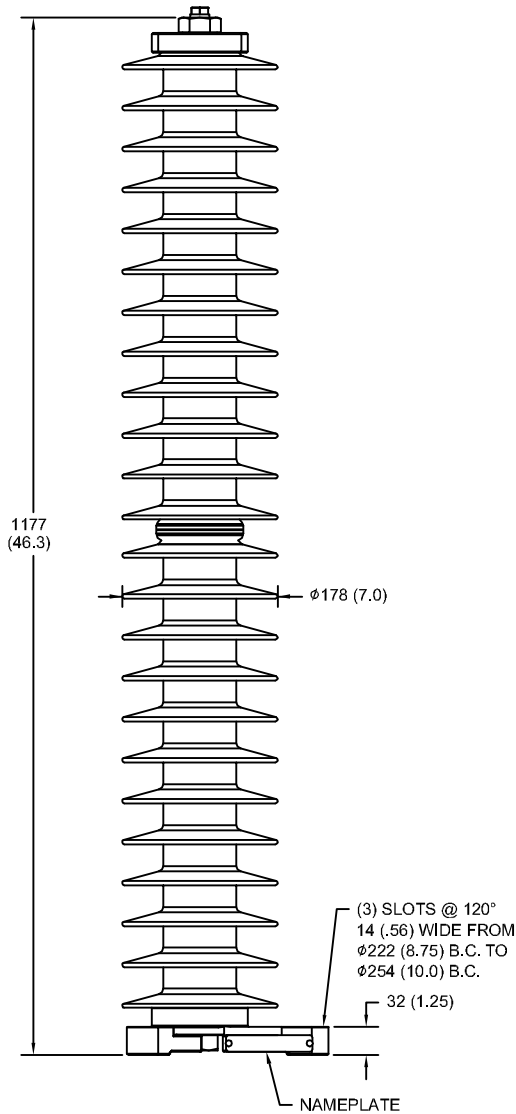
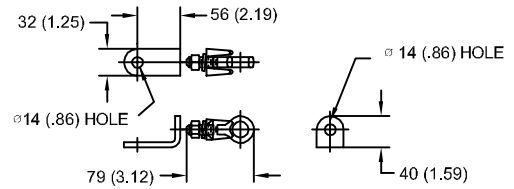


# 74 kV MCOV

SIZE A	DWG NO 911XPB090AS	SHT 1	REV
REV	DESCRIPTION	DATE	APPROVED

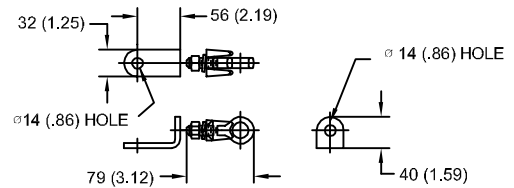


### LINE TERMINAL DETAIL



HDG TERMINAL BRACKET  
ONE HDG TERMINAL  
SUITABLE FOR CU OR AL CONDUCTOR SIZE  
Ø 7 (.25) - Ø 21 (.81) DIA  
25 - 240 sq mm  
AWG#4 - 500 MCM

### GROUND TERMINAL DETAIL



HDG TERMINAL BRACKET  
ONE HDG TERMINAL  
SUITABLE FOR CU OR AL CONDUCTOR SIZE  
Ø 7 (.25) - Ø 21 (.81) DIA  
25 - 240 sq mm  
AWG#4 - 500 MCM

### CHARACTERISTICS

RATED VOLTAGE	90 kVrms
MCOV	74 kVrms
MASS	26.7 kg (58.9 lb)
COG ABOVE BASE	589 (23.2)
CREEPAGE DISTANCE	3124 (123.0)
STRIKE DISTANCE	1100 (43.3)
LIGHTNING IMP W/S	631 kVpk
SWITCHING IMP WET W/S	529 kVpk
POWER FREQ WET W/S	275 kVrms
TOV 1s NO PRIOR DUTY	105 kVrms
TOV 10s NO PRIOR DUTY	101 kVrms
TOV 1s W/PRIOR DUTY	102 kVrms
TOV 10s W/PRIOR DUTY	97.7 kVrms

### CANTILEVER FORCE

MAXIMUM CONTINUOUS	897 N (202 lbs)
ULTIMATE (max pk)	1794 N (403 lbs)

### RECOMMENDED CLEARANCE (CENTER - CENTER)

PHASE TO GROUND	610 (24.0)
PHASE TO PHASE	782 (30.8)

- NOTES:  
1. DIMENSIONS IN millimeters(inches) SUBJECT TO ±3% TOLERANCE  
2. CLEARANCE AND INSULATION W/S VOLTAGE APPLY AT SEA LEVEL  
3. ARRESTER SUITABLE FOR OPERATION AT ALTITUDES UP TO 1800 m (6000 ft)  
4. PACKAGED IN A CORRUGATED BOX.

.5µSEC 10kA IR kV	SWITCHING SURGE IR kV		MAXIMUM 8/20 DISCHARGE VOLTAGE - kV AT					
	500 A	1 KA	1.5 kA	3.0 kA	5 kA	10 kA	20 kA	40 kA
245	174	182	186	195	205	220	238	271



GE ENERGY  
FORT EDWARD, N.Y., U.S.A.

SIZE  
**A**

ANSI  
STATION CLASS

**ARRESTER**  
**9L11XPB090AS**

DRAWN JBC DATE 5/03/2011

ISSUED DATE 5/03/2011

SCALE

SHEET 1 CONT ON -

DISTR. TO