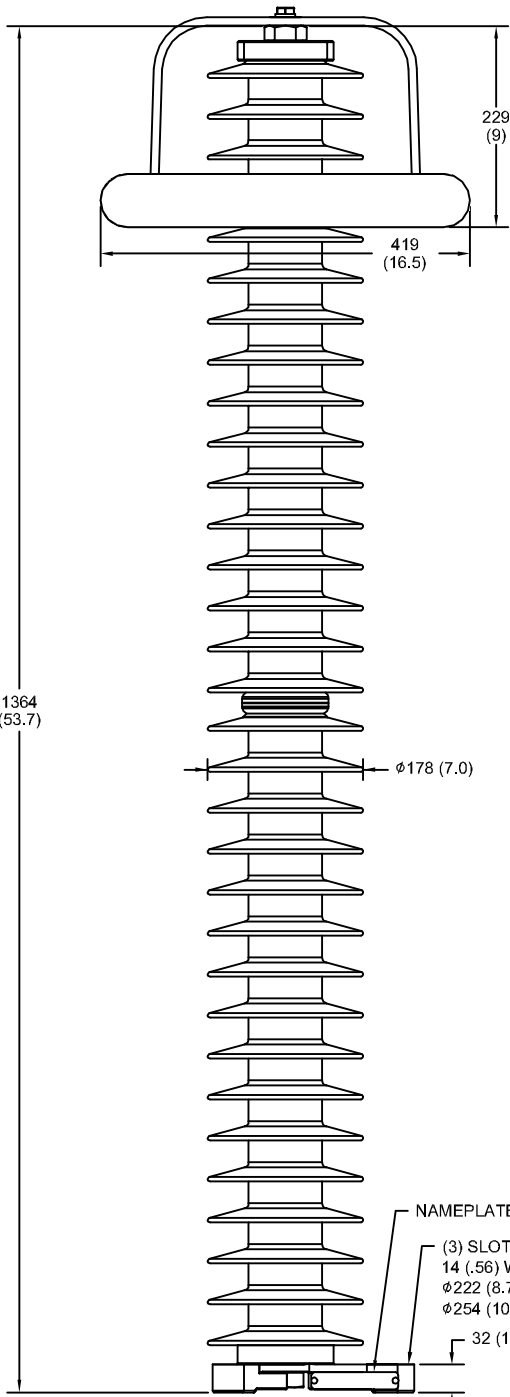


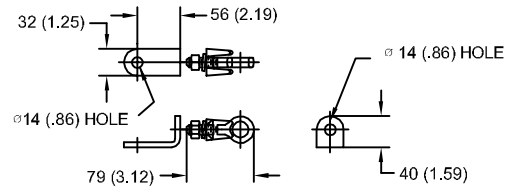
# 98 kV MCOV

SIZE A	DWG NO 911XPB120AS	SHT 1	REV
REV	DESCRIPTION	DATE	APPROVED



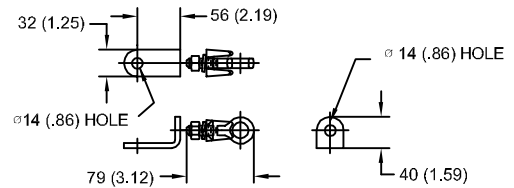
- NOTES:  
 1. DIMENSIONS IN millimeters (inches) SUBJECT TO ±3% TOLERANCE  
 2. CLEARANCE AND INSULATION W/S VOLTAGE APPLY AT SEA LEVEL  
 3. ARRESTER SUITABLE FOR OPERATION AT ALTITUDES UP TO 1800 m (6000 ft)  
 4. PACKAGED IN A CORRUGATED BOX.

### LINE TERMINAL DETAIL



HDG TERMINAL BRACKET  
 ONE HDG TERMINAL  
 SUITABLE FOR CU OR AL CONDUCTOR SIZE  
 φ 7 (.25) - φ 21 (.81) DIA  
 25 - 240 sq mm  
 AWG#4 - 500 MCM

### GROUND TERMINAL DETAIL



HDG TERMINAL BRACKET  
 ONE HDG TERMINAL  
 SUITABLE FOR CU OR AL CONDUCTOR SIZE  
 φ 7 (.25) - φ 21 (.81) DIA  
 25 - 240 sq mm  
 AWG#4 - 500 MCM

### CHARACTERISTICS

RATED VOLTAGE	120 kVrms
MCOV	98 kVrms
MASS	33.2 kg (73.1 lb)
COG ABOVE BASE	713 (28.1)
CREEPAGE DISTANCE	3654 (143.9)
STRIKE DISTANCE	1135 (44.7)
LIGHTNING IMP W/S	652 kVpk
SWITCHING IMP WET W/S	546 kVpk
POWER FREQ WET W/S	283 kVrms
TOV 1s NO PRIOR DUTY	139 kVrms
TOV 10s NO PRIOR DUTY	133 kVrms
TOV 1s W/PRIOR DUTY	135 kVrms
TOV 10s W/PRIOR DUTY	129 kVrms

### CANTILEVER FORCE

MAXIMUM CONTINUOUS	781 N (176 lbs)
ULTIMATE (max pk)	1562 N (351 lbs)

### RECOMMENDED CLEARANCE (CENTER - CENTER)

PHASE TO GROUND	914 (36.0)
PHASE TO PHASE	1234 (48.6)

.5μSEC 10kA IR kV	SWITCHING SURGE IR kV		MAXIMUM 8/20 DISCHARGE VOLTAGE - kV AT					
	500 A	1 KA	1.5 kA	3.0 kA	5 kA	10 kA	20 kA	40 kA
322	231	241	246	259	271	291	315	359



GE ENERGY  
 FORT EDWARD, N.Y., U.S.A.

SIZE

A

ANSI

STATION CLASS

ARRESTER  
 9L11XPB120AS

DRAWN JBC DATE 5/03/2011

ISSUED DATE 5/03/2011

SCALE

SHEET 1 CONT ON -

DISTR. TO