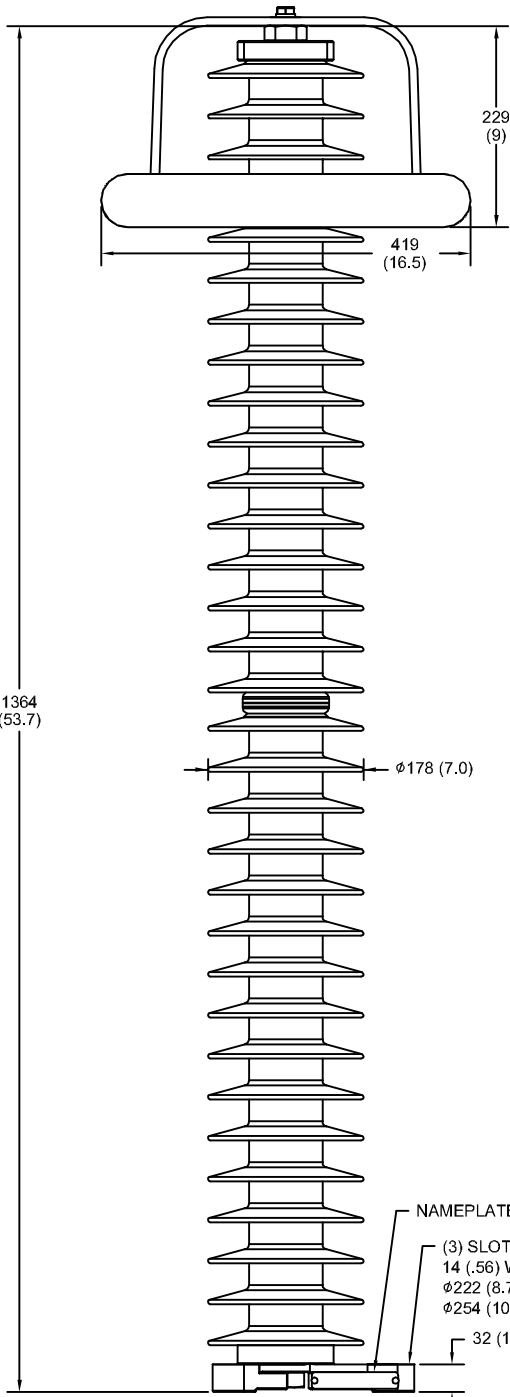


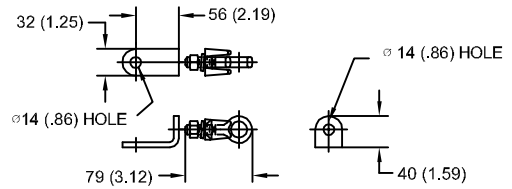
SIZE A	DWG NO 911XPB132AS	SHT 1	REV
REV	DESCRIPTION	DATE	APPROVED

106 kV MCOV



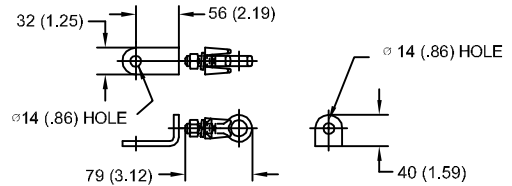
- NOTES:
 1. DIMENSIONS IN millimeters(inches) SUBJECT TO ±3% TOLERANCE
 2. CLEARANCE AND INSULATION W/S VOLTAGE APPLY AT SEA LEVEL
 3. ARRESTER SUITABLE FOR OPERATION AT ALTITUDES UP TO 1800 m (6000 ft)
 4. PACKAGED IN A CORRUGATED BOX.

LINE TERMINAL DETAIL



HDG TERMINAL BRACKET
 ONE HDG TERMINAL
 SUITABLE FOR CU OR AL CONDUCTOR SIZE
 ϕ 7 (.25) - ϕ 21 (.81) DIA
 25 - 240 sq mm
 AWG#4 - 500 MCM

GROUND TERMINAL DETAIL



HDG TERMINAL BRACKET
 ONE HDG TERMINAL
 SUITABLE FOR CU OR AL CONDUCTOR SIZE
 ϕ 7 (.25) - ϕ 21 (.81) DIA
 25 - 240 sq mm
 AWG#4 - 500 MCM

CHARACTERISTICS	
RATED VOLTAGE	132 kVrms
MCOV	106 kVrms
MASS	33.2 kg (73.1 lb)
COG ABOVE BASE	713 (28.1)
CREEPAGE DISTANCE	3654 (143.9)
STRIKE DISTANCE	1135 (44.7)
LIGHTNING IMP W/S	652 kVpk
SWITCHING IMP WET W/S	546 kVpk
POWER FREQ WET W/S	283 kVrms
TOV 1s NO PRIOR DUTY	152 kVrms
TOV 10s NO PRIOR DUTY	145 kVrms
TOV 1s W/PRIOR DUTY	147 kVrms
TOV 10s W/PRIOR DUTY	141 kVrms

CANTILEVER FORCE	
MAXIMUM CONTINUOUS	781 N (176 lbs)
ULTIMATE (max pk)	1562 N (351 lbs)

RECOMMENDED CLEARANCE (CENTER - CENTER)	
PHASE TO GROUND	983 (38.7)
PHASE TO PHASE	1311 (51.6)

.5μSEC 10kA IR kV	SWITCHING SURGE IR kV		MAXIMUM 8/20 DISCHARGE VOLTAGE - kV AT					
	500 A	1 KA	1.5 kA	3.0 kA	5 kA	10 kA	20 kA	40 kA
350	252	262	268	282	296	317	343	391



GE ENERGY
 FORT EDWARD, N.Y., U.S.A.

SIZE

A

ANSI

STATION CLASS

ARRESTER
 9L11XPB132AS

DRAWN JBC DATE 5/03/2011

ISSUED DATE 5/03/2011

SCALE

SHEET 1 CONT ON -

DISTR. TO