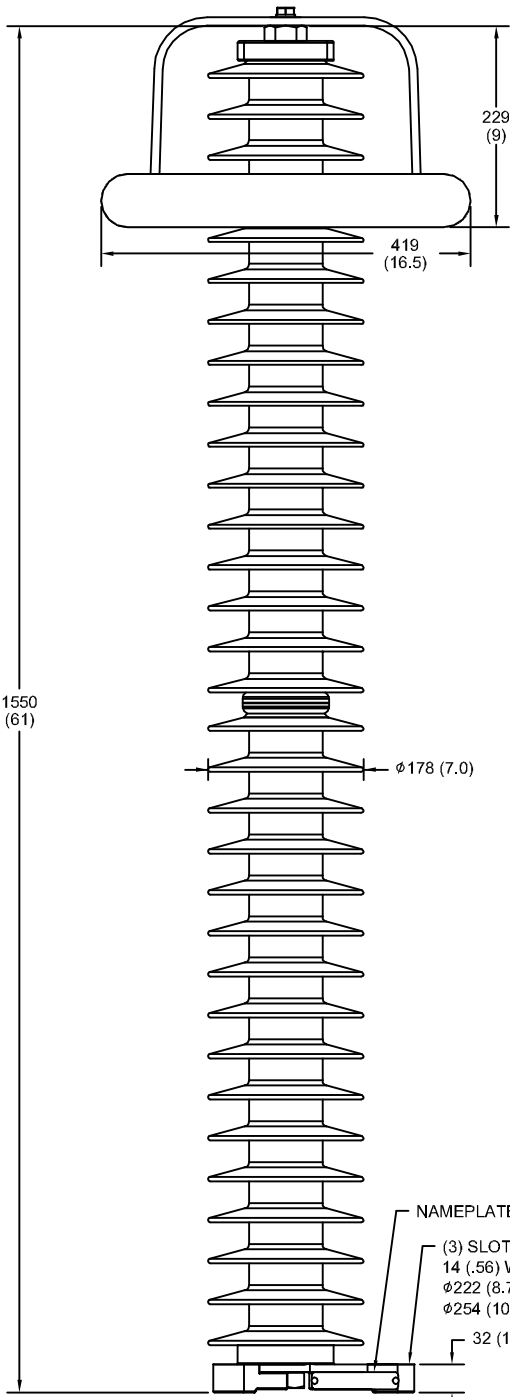


SIZE A	DWG NO 911XPB144AS	SHT 1	REV
REV	DESCRIPTION	DATE	APPROVED

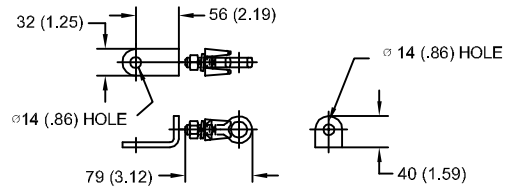
# 115 kV MCOV



- NOTES:  
 1. DIMENSIONS IN millimeters(inches) SUBJECT TO ±3% TOLERANCE  
 2. CLEARANCE AND INSULATION W/S VOLTAGE APPLY AT SEA LEVEL  
 3. ARRESTER SUITABLE FOR OPERATION AT ALTITUDES UP TO 1800 m (6000 ft)  
 4. PACKAGED IN A WOOD CRATE.

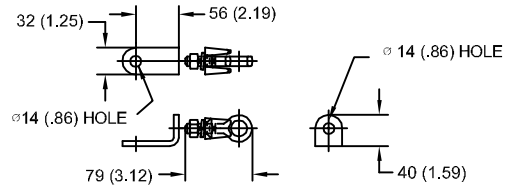
.5μSEC 10kA IR kV	SWITCHING SURGE IR kV		MAXIMUM 8/20 DISCHARGE VOLTAGE - kV AT					
	500 A	1 KA	1.5 kA	3.0 kA	5 kA	10 kA	20 kA	40 kA
382	275	286	293	308	323	346	375	427

## LINE TERMINAL DETAIL



HDG TERMINAL BRACKET  
 ONE HDG TERMINAL  
 SUITABLE FOR CU OR AL CONDUCTOR SIZE  
 φ 7 (.25) - φ 21 (.81) DIA  
 25 - 240 sq mm  
 AWG#4 - 500 MCM

## GROUND TERMINAL DETAIL



HDG TERMINAL BRACKET  
 ONE HDG TERMINAL  
 SUITABLE FOR CU OR AL CONDUCTOR SIZE  
 φ 7 (.25) - φ 21 (.81) DIA  
 25 - 240 sq mm  
 AWG#4 - 500 MCM

CHARACTERISTICS	
RATED VOLTAGE	144 kVrms
MCOV	115 kVrms
MASS	37.2 kg (82.1 lb)
COG ABOVE BASE	808 (31.8)
CREEPAGE DISTANCE	4185 (164.8)
STRIKE DISTANCE	1321 (52.0)
LIGHTNING IMP W/S	758 kVpk
SWITCHING IMP WET W/S	635 kVpk
POWER FREQ WET W/S	320 kVrms
TOV 1s NO PRIOR DUTY	166 kVrms
TOV 10s NO PRIOR DUTY	159 kVrms
TOV 1s W/PRIOR DUTY	160 kVrms
TOV 10s W/PRIOR DUTY	154 kVrms

CANTILEVER FORCE	
MAXIMUM CONTINUOUS	692 N (156 lbs)
ULTIMATE (max pk)	1384 N (311 lbs)

RECOMMENDED CLEARANCE (CENTER - CENTER)	
PHASE TO GROUND	1059 (41.7)
PHASE TO PHASE	1397 (55.0)



GE ENERGY  
 FORT EDWARD, N.Y., U.S.A.

SIZE  
**A**

ANSI  
 STATION CLASS

**ARRESTER**  
**9L11XPB144AS**

DRAWN JBC DATE 5/03/2011

ISSUED DATE 5/03/2011

SCALE

SHEET 1 CONT ON -

DISTR. TO