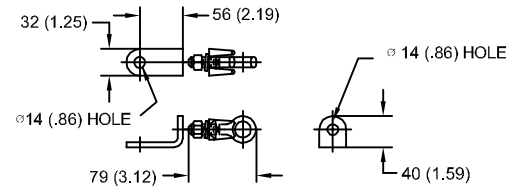


2.55 kV MCOV

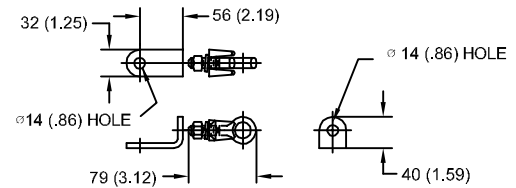
SIZE A	DWG NO 911XPE003AS	SHT 1	REV
REV	DESCRIPTION	DATE	APPROVED

LINE TERMINAL DETAIL

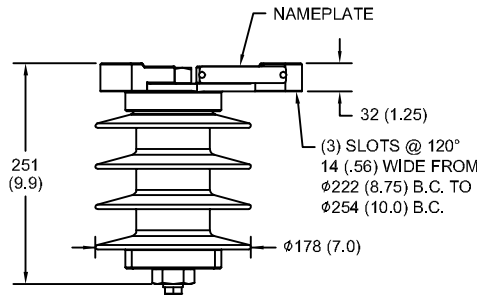


HDG TERMINAL BRACKET
 ONE HDG TERMINAL
 SUITABLE FOR CU OR AL CONDUCTOR SIZE
 φ 7 (.25) - φ 21 (.81) DIA
 25 - 240 sq mm
 AWG#4 - 500 MCM

GROUND TERMINAL DETAIL



HDG TERMINAL BRACKET
 ONE HDG TERMINAL
 SUITABLE FOR CU OR AL CONDUCTOR SIZE
 φ 7 (.25) - φ 21 (.81) DIA
 25 - 240 sq mm
 AWG#4 - 500 MCM



CHARACTERISTICS

RATED VOLTAGE	3 kVrms
MCOV	2.55 kVrms
MASS	5.7 kg (12.6 lb)
COG ABOVE BASE	127 (5.0)
CREEPAGE DISTANCE	498 (19.6)
STRIKE DISTANCE	175 (6.9)
LIGHTNING IMP W/S	101 kVpk
SWITCHING IMP WET W/S	84 kVpk
POWER FREQ WET W/S	50 kVrms
TOV 1s NO PRIOR DUTY	3.62 kVrms
TOV 10s NO PRIOR DUTY	3.47 kVrms
TOV 1s W/PRIOR DUTY	3.51 kVrms
TOV 10s W/PRIOR DUTY	3.37 kVrms

CANTILEVER FORCE

MAXIMUM CONTINUOUS	3383 N (761 lbs)
ULTIMATE (max pk)	6766 N (1521 lbs)

RECOMMENDED CLEARANCE (CENTER - CENTER)

PHASE TO GROUND	114 (4.5)
PHASE TO PHASE	229 (9.0)

- NOTES:
 1. DIMENSIONS IN millimeters(inches) SUBJECT TO ±3% TOLERANCE
 2. CLEARANCE AND INSULATION W/S VOLTAGE APPLY AT SEA LEVEL
 3. ARRESTER SUITABLE FOR OPERATION AT ALTITUDES UP TO 1800 m (6000 ft)
 4. PACKAGED IN A CORRUGATED BOX.

.5μSEC 10kA IR kV	SWITCHING SURGE IR kV		MAXIMUM 8/20 DISCHARGE VOLTAGE - kV AT					
	500 A	1 KA	1.5 kA	3.0 kA	5 kA	10 kA	20 kA	40 kA
10.5	6.01	6.26	6.41	6.74	7.06	7.58	8.19	9.34



GE ENERGY
 FORT EDWARD, N.Y., U.S.A.

SIZE
A

ANSI
 STATION CLASS

ARRESTER
 9L11XPE003AS

DRAWN JBC DATE 5/03/2011

ISSUED DATE 5/03/2011

SCALE

SHEET 1 CONT ON -

DISTR. TO