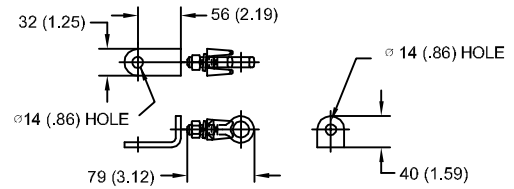


# 22 kV MCOV

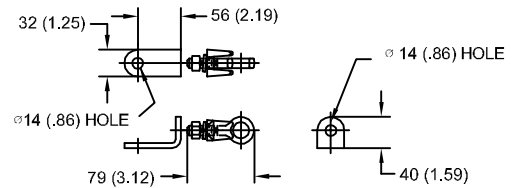
SIZE A	DWG NO 911XPE027AS	SHT 1	REV
REV	DESCRIPTION	DATE	APPROVED

### LINE TERMINAL DETAIL

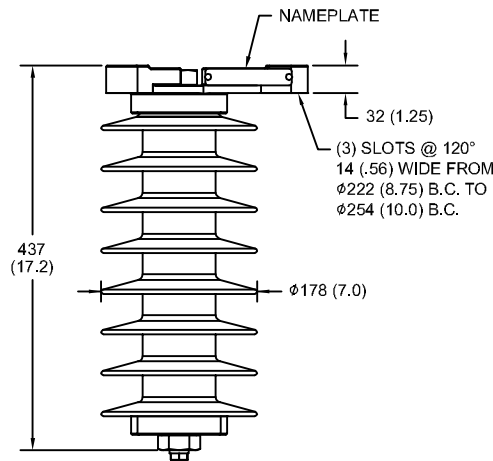


HDG TERMINAL BRACKET  
 ONE HDG TERMINAL  
 SUITABLE FOR CU OR AL CONDUCTOR SIZE  
 φ 7 (.25) - φ 21 (.81) DIA  
 25 - 240 sq mm  
 AWG#4 - 500 MCM

### GROUND TERMINAL DETAIL



HDG TERMINAL BRACKET  
 ONE HDG TERMINAL  
 SUITABLE FOR CU OR AL CONDUCTOR SIZE  
 φ 7 (.25) - φ 21 (.81) DIA  
 25 - 240 sq mm  
 AWG#4 - 500 MCM



### CHARACTERISTICS

RATED VOLTAGE	27 kVrms
MCOV	22 kVrms
MASS	9.9 kg (21.9 lb)
COG ABOVE BASE	218 (8.6)
CREEPAGE DISTANCE	1029 (40.5)
STRIKE DISTANCE	361 (14.2)
LIGHTNING IMP W/S	207 kVpk
SWITCHING IMP WET W/S	173 kVpk
POWER FREQ WET W/S	101 kVrms
TOV 1s NO PRIOR DUTY	31.3 kVrms
TOV 10s NO PRIOR DUTY	29.9 kVrms
TOV 1s W/PRIOR DUTY	30.3 kVrms
TOV 10s W/PRIOR DUTY	29.0 kVrms

### CANTILEVER FORCE

MAXIMUM CONTINUOUS	2173 N (489 lbs)
ULTIMATE (max pk)	4346 N (977 lbs)

### RECOMMENDED CLEARANCE (CENTER - CENTER)

PHASE TO GROUND	208 (8.2)
PHASE TO PHASE	328 (12.9)

- NOTES:  
 1. DIMENSIONS IN millimeters(inches) SUBJECT TO ±3% TOLERANCE  
 2. CLEARANCE AND INSULATION W/S VOLTAGE APPLY AT SEA LEVEL  
 3. ARRESTER SUITABLE FOR OPERATION AT ALTITUDES UP TO 1800 m (6000 ft)  
 4. PACKAGED IN A CORRUGATED BOX.

.5μSEC 10kA IR kV	SWITCHING SURGE IR kV		MAXIMUM 8/20 DISCHARGE VOLTAGE - kV AT					
	500 A	1 KA	1.5 kA	3.0 kA	5 kA	10 kA	20 kA	40 kA
73.6	51.8	54.0	55.3	58.1	60.9	65.4	70.7	80.6



GE ENERGY  
 FORT EDWARD, N.Y., U.S.A.

SIZE  
A

ANSI  
 STATION CLASS

ARRESTER  
 9L11XPE027AS

DRAWN JBC DATE 5/03/2011

ISSUED DATE 5/03/2011

SCALE

SHEET 1 CONT ON -

DISTR. TO