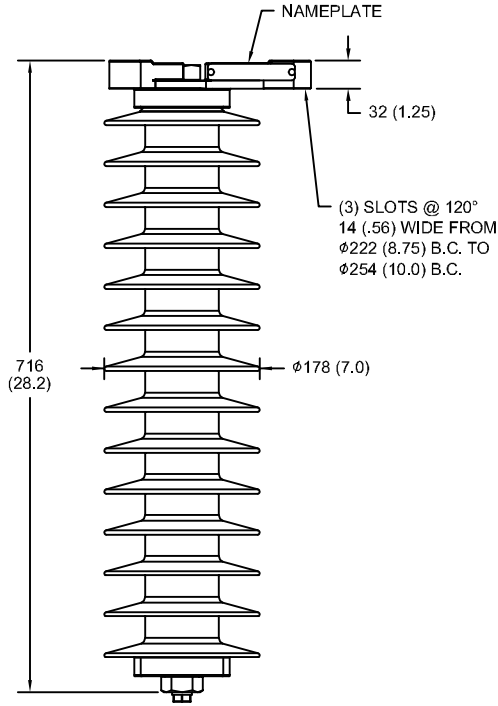
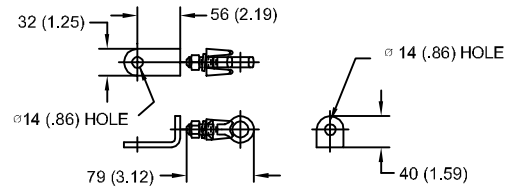


# 48 kV MCOV

SIZE A	DWG NO 911XPE060AS	SHT 1	REV
REV	DESCRIPTION	DATE	APPROVED

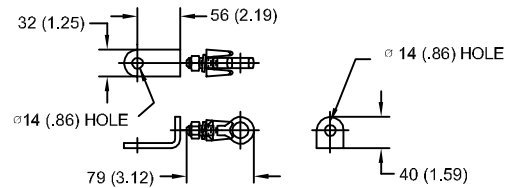


### LINE TERMINAL DETAIL



HDG TERMINAL BRACKET  
 ONE HDG TERMINAL  
 SUITABLE FOR CU OR AL CONDUCTOR SIZE  
 φ 7 (.25) - φ 21 (.81) DIA  
 25 - 240 sq mm  
 AWG#4 - 500 MCM

### GROUND TERMINAL DETAIL



HDG TERMINAL BRACKET  
 ONE HDG TERMINAL  
 SUITABLE FOR CU OR AL CONDUCTOR SIZE  
 φ 7 (.25) - φ 21 (.81) DIA  
 25 - 240 sq mm  
 AWG#4 - 500 MCM

CHARACTERISTICS	
RATED VOLTAGE	60 kVrms
MCOV	48 kVrms
MASS	16.3 kg (35.9 lb)
COG ABOVE BASE	358 (14.1)
CREEPAGE DISTANCE	1827 (71.9)
STRIKE DISTANCE	640 (25.2)
LIGHTNING IMP W/S	367 kVpk
SWITCHING IMP WET W/S	308 kVpk
POWER FREQ WET W/S	172 kVrms
TOV 1s NO PRIOR DUTY	69.0 kVrms
TOV 10s NO PRIOR DUTY	66.0 kVrms
TOV 1s W/PRIOR DUTY	66.7 kVrms
TOV 10s W/PRIOR DUTY	64.1 kVrms

CANTILEVER FORCE	
MAXIMUM CONTINUOUS	1414 N (318 lbs)
ULTIMATE (max pk)	2829 N (636 lbs)

RECOMMENDED CLEARANCE (CENTER - CENTER)	
PHASE TO GROUND	411 (16.2)
PHASE TO PHASE	561 (22.1)

- NOTES:  
 1. DIMENSIONS IN millimeters(inches) SUBJECT TO ±3% TOLERANCE  
 2. CLEARANCE AND INSULATION W/S VOLTAGE APPLY AT SEA LEVEL  
 3. ARRESTER SUITABLE FOR OPERATION AT ALTITUDES UP TO 1800 m (6000 ft)  
 4. PACKAGED IN A CORRUGATED BOX.

.5μSEC 10kA IR kV	SWITCHING SURGE IR kV		MAXIMUM 8/20 DISCHARGE VOLTAGE - kV AT					
	500 A	1 KA	1.5 kA	3.0 kA	5 kA	10 kA	20 kA	40 kA
160	114	119	122	128	134	144	156	178



GE ENERGY  
 FORT EDWARD, N.Y., U.S.A.

SIZE  
A

ANSI  
 STATION CLASS

ARRESTER  
 9L11XPE060AS

DRAWN JBC DATE 5/03/2011

ISSUED DATE 5/03/2011

SCALE

SHEET 1 CONT ON -

DISTR. TO