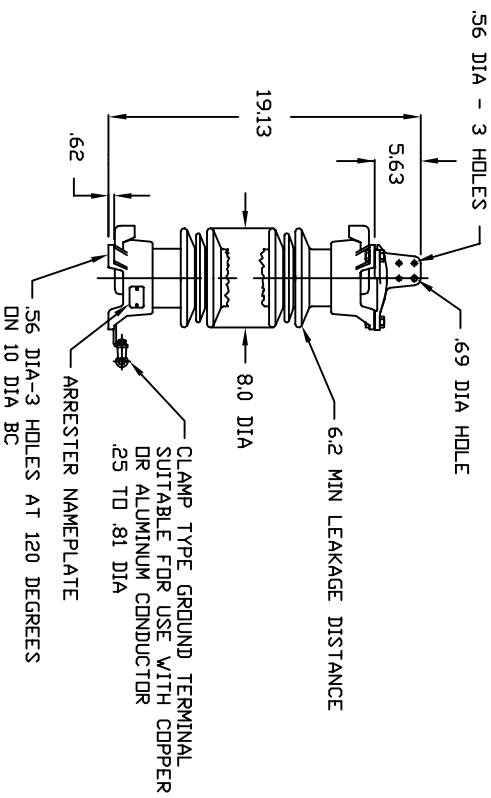
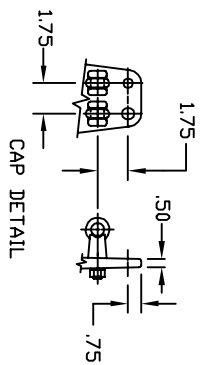


- NOTES:
- 1 ARRESTER PACKAGED FOR DOMESTIC SHIPMENT
  - 2 NET WEIGHT 65 LB
  - 3 MAXIMUM CONTINUOUS LINE TO GROUND OPERATING VOLTAGE, 3.7 KV RMS
  - 4 DIMENSIONS SUBJECT TO  $\pm 3\%$  TOLERANCE
  - 5 DUTY CYCLE VOLTAGE RATING 4.5 KV RMS



ANSI-70 GREY GLAZE  
 ALTITUDE TO 12000 FT

5 $\mu$ SEC 10KA IR KV	500 A SWITCHING SURGE IR KV	MAXIMUM 8/20 DISCHARGE VOLTAGE - KV AT					
		1.5 KA	3.0 KA	5 KA	10 KA	20 KA	40 KA
13.8	9.6	10.5	11.0	11.4	12.2	13.7	15.7

PART PORCELAIN STATION ARR		SCALE .06=1	
NAME 9L11ZGA004S			
DESIGN ALL	DATE 02/24/98	DWG NO S015318-00	REV. NO 01
DRAWN JVR	DATE 11/05/98		

Approved 11-05-1998