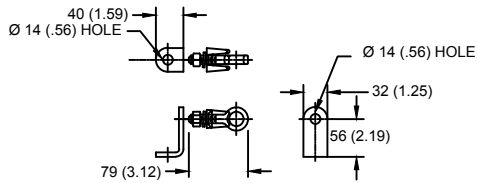
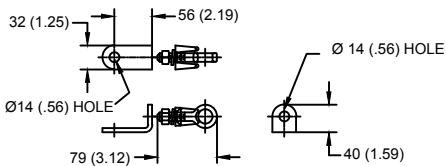


**LINE TERMINAL DETAIL**

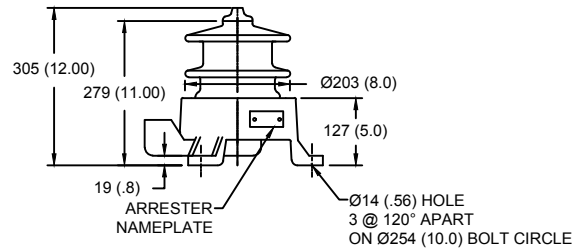


HDG TERMINAL BRACKET, PART No. 896064001  
 ONE HDG TERMINAL, PART No. 2714143001  
 SUITABLE FOR COPPER OR ALUMINUM CONDUCTOR SIZE  
 Ø 7 (.25) - Ø 21 (.81)  
 25 - 240 sq mm  
 AWG#4 - 500 MCM

**GROUND TERMINAL DETAIL**



HDG TERMINAL BRACKET, PART No. 896064001  
 ONE HDG TERMINAL, PART No. 2714143001  
 SUITABLE FOR COPPER OR ALUMINUM CONDUCTOR SIZE  
 Ø 7 (.25) - Ø 21 (.81)  
 25 - 240 sq mm  
 AWG#4 - 500 MCM



Ø = DIAMETER  
 HDG = HOT DIP GALVANIZED

CHARACTERISTICS	
RATED VOLTAGE	12 kVrms
MCOV	10.2 kVrms
MASS	20kg (45lb)
CREEPAGE DISTANCE	282 (11.1)
LIGHTNING IMP W/S	110 kV
SWITCHING IMP W/S	88 kV
POWER FREQ W/S	45 kVrms
TOV 1s	15.0 kVrms
TOV 10s	14.4 kVrms
COG ABOVE BASE	160 (6.3)
HOUSING	GREY PORCELAIN

CANTILEVER FORCE	
MAXIMUM CONTINUOUS	10381 N (2334lbf)
ULTIMATE (UMS)	25951 N (5834lbf)

RECOMMENDED CLEARANCE (TO METAL PARTS)	
PHASE TO GROUND	27 (1.1)
PHASE TO PHASE	53 (2.1)

- NOTES:  
 1. DIMENSIONS IN millimeters(inches) SUBJECT TO ±3% TOLERANCE  
 2. CLEARANCE AND INSULATION W/S VOLTAGE APPLY AT SEA LEVEL  
 3. ARRESTER SUITABLE FOR OPERATION AT ALTITUDES UP TO 4500m (14800ft)

DISCHARGE VOLTAGE (kV) FOR INDICATED IMPULSE TYPES AND CURRENT MAGNITUDES								
FRONT OF WAVE	SWITCHING SURGE	8/20 LIGHTNING IMPULSE						
		10 kA	0.5 kA	1 kA	1.5 kA	3 kA	5 kA	10 kA
34	25	26	26.2	27.6	29	31	33.9	37.9

IEEE C62.11  
 STATION CLASS  
 ARRESTER

Program Revision  
 2021.04.23.04.46.14

REV DATE  
**01/11/2021**

TITLE				<b>GE ARRESTER 10.2 KV MCOV</b>			
SIZE	DWG NO.	CAT / PART / ASSY NO.		REV			
S	211512704	9L11ZGB012AS		1			
DO NOT SCALE THIS DRAWING		DRN BY	NON	DATE	01/11/2021	SHEET 1 OF 1	