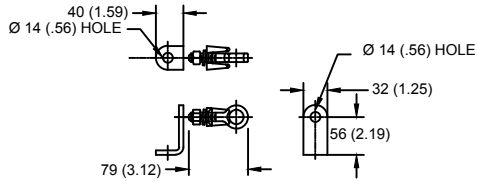
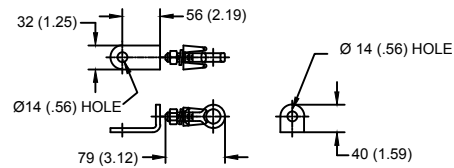


LINE TERMINAL DETAIL

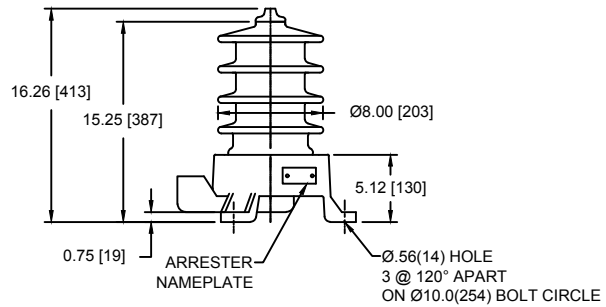


HDG TERMINAL BRACKET, PART No. 896064001
 ONE HDG TERMINAL, PART No. 2714143001
 SUITABLE FOR COPPER OR ALUMINUM CONDUCTOR SIZE
 Ø 7 (.25) - Ø 21 (.81)
 25 - 240 sq mm
 AWG#4 - 500 MCM

GROUND TERMINAL DETAIL



HDG TERMINAL BRACKET, PART No. 896064001
 ONE HDG TERMINAL, PART No. 2714143001
 SUITABLE FOR COPPER OR ALUMINUM CONDUCTOR SIZE
 Ø 7 (.25) - Ø 21 (.81)
 25 - 240 sq mm
 AWG#4 - 500 MCM



Ø = DIAMETER
 HDG = HOT DIP GALVANIZED

CHARACTERISTICS	
RATED VOLTAGE	15 kVrms
MCOV	12.7 kVrms
MASS	24kg (53lb)
CREEPAGE DISTANCE	508 (20.0)
LIGHTNING IMP W/S	150 kV
SWITCHING IMP W/S	120 kV
POWER FREQ W/S	60 kVrms
TOV 1s	18.7 kVrms
TOV 10s	18.0 kVrms
COG ABOVE BASE	215 (8.5)
HOUSING	GREY PORCELAIN
CANTILEVER FORCE	
MAXIMUM CONTINUOUS	7666 N (1723lbf)
ULTIMATE (UMS)	19164 N (4308lbf)
RECOMMENDED CLEARANCE (TO METAL PARTS)	
PHASE TO GROUND	42 (1.6)
PHASE TO PHASE	53 (2.1)

- NOTES:
 1. DIMENSIONS IN millimeters(inches) SUBJECT TO ±3% TOLERANCE
 2. CLEARANCE AND INSULATION W/S VOLTAGE APPLY AT SEA LEVEL
 3. ARRESTER SUITABLE FOR OPERATION AT ALTITUDES UP TO 4500m (14800ft)

DISCHARGE VOLTAGE (kV) FOR INDICATED IMPULSE TYPES AND CURRENT MAGNITUDES								
FRONT OF WAVE	SWITCHING SURGE	8/20 LIGHTNING IMPULSE						
		10 kA	0.5 kA	1 kA	1.5 kA	3 kA	5 kA	10 kA
42	31	32	33	34.7	36.4	39	42.7	47.7

IEEE C62.11
 STATION CLASS
 ARRESTER

Program Revision
 2021.04.23.04.46.14

REV DATE
01/11/2021

TITLE			
GE ARRESTER 12.7 KV MCOV			
SIZE	DWG NO.	CAT / PART / ASSY NO.	REV
S	211512705	9L11ZGB015AS	1
DO NOT SCALE THIS DRAWING	DRN BY	DATE	SHEET
	NON	01/11/2021	1 OF 1