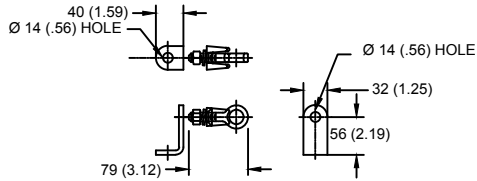
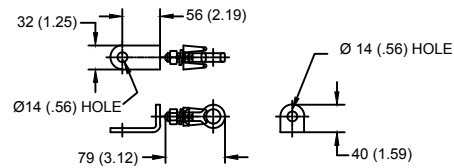


LINE TERMINAL DETAIL



HDG TERMINAL BRACKET, PART No. 896064001
 ONE HDG TERMINAL, PART No. 2714143001
 SUITABLE FOR COPPER OR ALUMINUM CONDUCTOR SIZE
 Ø 7 (.25) - Ø 21 (.81)
 25 - 240 sq mm
 AWG#4 - 500 MCM

GROUND TERMINAL DETAIL



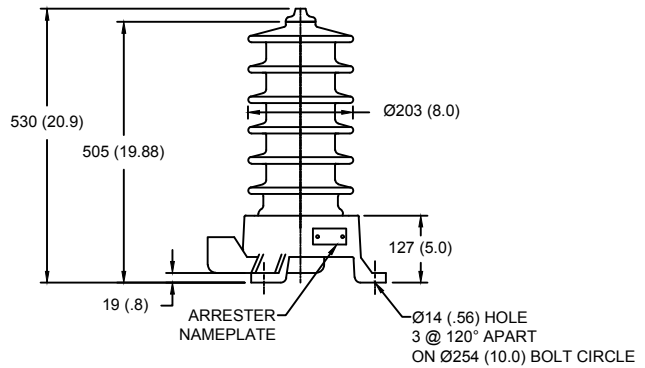
HDG TERMINAL BRACKET, PART No. 896064001
 ONE HDG TERMINAL, PART No. 2714143001
 SUITABLE FOR COPPER OR ALUMINUM CONDUCTOR SIZE
 Ø 7 (.25) - Ø 21 (.81)
 25 - 240 sq mm
 AWG#4 - 500 MCM

Ø = DIAMETER
 HDG = HOT DIP GALVANIZED

CHARACTERISTICS	
RATED VOLTAGE	27 kVrms
MCOV	22 kVrms
MASS	29kg (63lb)
CREEPAGE DISTANCE	724 (28.5)
LIGHTNING IMP W/S	150 kV
SWITCHING IMP W/S	120 kV
POWER FREQ W/S	60 kVrms
TOV 1s	32.4 kVrms
TOV 10s	31.1 kVrms
COG ABOVE BASE	276 (10.9)
HOUSING	GREY PORCELAIN

CANTILEVER FORCE	
MAXIMUM CONTINUOUS	5932 N (1333lbf)
ULTIMATE (UMS)	14829 N (3334lbf)

RECOMMENDED CLEARANCE (TO METAL PARTS)	
PHASE TO GROUND	99 (3.9)
PHASE TO PHASE	80 (3.1)



- NOTES:
 1. DIMENSIONS IN millimeters(inches) SUBJECT TO ±3% TOLERANCE
 2. CLEARANCE AND INSULATION W/S VOLTAGE APPLY AT SEA LEVEL
 3. ARRESTER SUITABLE FOR OPERATION AT ALTITUDES UP TO 4500m (14800ft)

DISCHARGE VOLTAGE (kV) FOR INDICATED IMPULSE TYPES AND CURRENT MAGNITUDES								
FRONT OF WAVE	SWITCHING SURGE	8/20 LIGHTNING IMPULSE						
		10 kA	0.5 kA	1 kA	1.5 kA	3 kA	5 kA	10 kA
71.5	52.5	54.5	56.2	59.3	62.1	66.5	72.8	81.3

IEEE C62.11
 STATION CLASS
 ARRESTER

Program Revision
 2021.04.23.04.46.14

REV DATE
01/11/2021

TITLE				GE ARRESTER 22 KV MCOV			
SIZE	DWG NO.	CAT / PART / ASSY NO.		REV			
S	211512709	9L11ZGB027AS		1			
DO NOT SCALE THIS DRAWING		DRN BY	NON	DATE	01/11/2021	SHEET 1 OF 1	