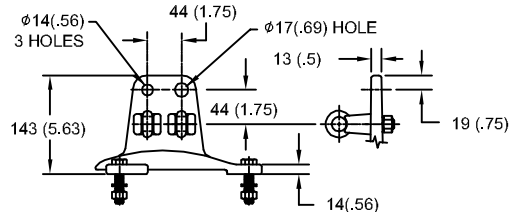


# 42kV MCOV

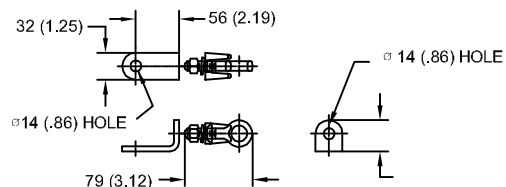
SIZE A	DWG NO 9L11ZTA054AS	SHT 1	REV
REV	DESCRIPTION	DATE	APPROVED

## LINE TERMINAL DETAIL

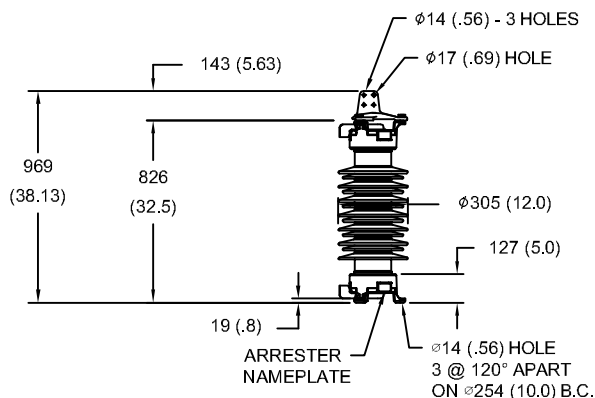


HDG 4-HOLE TERMINAL PAD  
TWO HDG TERMINALS  
SUITABLE FOR CU OR AL CONDUCTOR SIZE  
 $\phi 7(.25) - \phi 21(.81)$  DIA  
25 - 240 sq mm  
AWG#4 - 500 MCM

## GROUND TERMINAL DETAIL



HDG TERMINAL BRACKET  
ONE HDG TERMINAL  
SUITABLE FOR CU OR AL CONDUCTOR SIZE  
 $\phi 7(.25) - \phi 21(.81)$  DIA  
25 - 240 sq mm  
AWG#4 - 500 MCM



- NOTES:  
1. DIMENSIONS IN millimeters(inches) SUBJECT TO  $\pm 3\%$  TOLERANCE  
2. CLEARANCE AND INSULATION W/S VOLTAGE APPLY AT SEA LEVEL  
3. ARRESTER SUITABLE FOR OPERATION AT ALTITUDES UP TO 3650m (12000ft)

## CHARACTERISTICS

RATED VOLTAGE	54 kVrms
MCOV	42 kVrms
MASS	80kg (175lb)
CREEPAGE DISTANCE	1905 (75.0)
LIGHTNING IMP W/S	358 kV
SWITCHING IMP W/S	310 kV
POWER FREQ W/S	186 kVrms
TOV 1s	62.5 kVrms
TOV 10s	60.0 kVrms
COG ABOVE BASE	439 (17.3)
HOUSING	GREY PORCELAIN

## CANTILEVER FORCE

MAXIMUM CONTINUOUS	7021 N (1578lbf)
ULTIMATE (UMS)	17553 N (3946lbf)

## RECOMMENDED CLEARANCE (TO METAL PARTS)

PHASE TO GROUND	211 (8.3)
PHASE TO PHASE	253 (9.9)

## DISCHARGE VOLTAGE (kV) FOR INDICATED IMPULSE TYPES AND CURRENT MAGNITUDES

FRONT OF WAVE	SWITCHING SURGE	8/20 LIGHTNING IMPULSE					
10 kA	0.5 kA	1.5 kA	3 kA	5 kA	10 kA	20 kA	40 kA
133	101	108	113	117	122	131	144



GE ENERGY  
FORT EDWARD, N.Y., U.S.A.

SIZE

A

ANSI  
STATION CLASS

ARRESTER  
9L11ZTA054AS

DRAWN JBC DATE 04/14/2011

ISSUED DATE 04/14/2011

SCALE

SHEET 1 CONT ON -

DISTR. TO