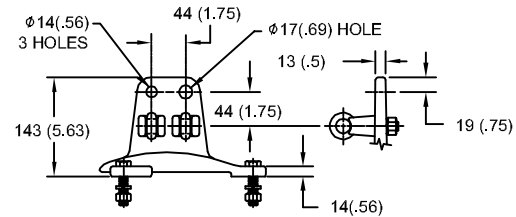


48kV MCOV

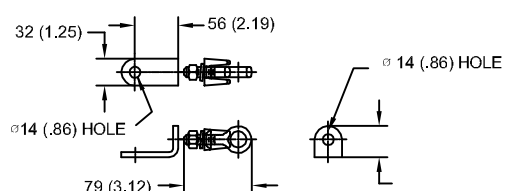
SIZE A	DWG NO 9L11ZTA060AS	SHT 1	REV
REV	DESCRIPTION	DATE	APPROVED

LINE TERMINAL DETAIL

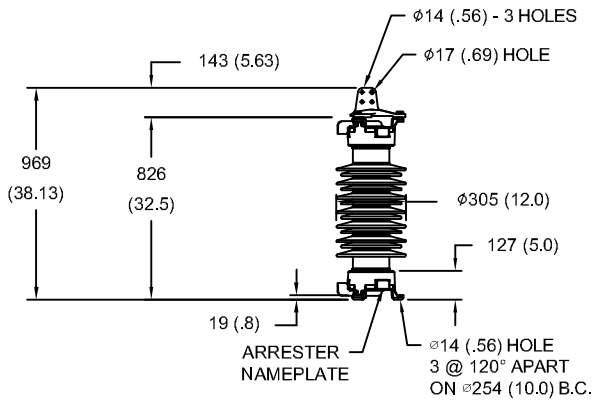


HDG 4-HOLE TERMINAL PAD
TWO HDG TERMINALS
SUITABLE FOR CU OR AL CONDUCTOR SIZE
φ 7 (.25) - φ 21 (.81) DIA
25 - 240 sq mm
AWG#4 - 500 MCM

GROUND TERMINAL DETAIL



HDG TERMINAL BRACKET
ONE HDG TERMINAL
SUITABLE FOR CU OR AL CONDUCTOR SIZE
φ 7 (.25) - φ 21 (.81) DIA
25 - 240 sq mm
AWG#4 - 500 MCM



ARRESTER NAMEPLATE
φ14 (.56) HOLE
3 @ 120° APART
ON φ254 (10.0) B.C.

CHARACTERISTICS

RATED VOLTAGE	60 kVrms
MCOV	48 kVrms
MASS	81kg (178lb)
CREEPAGE DISTANCE	1905 (75.0)
LIGHTNING IMP W/S	358 kV
SWITCHING IMP W/S	310 kV
POWER FREQ W/S	186 kVrms
TOV 1s	71.5 kVrms
TOV 10s	68.5 kVrms
COG ABOVE BASE	438 (17.3)
HOUSING	GREY PORCELAIN

CANTILEVER FORCE

MAXIMUM CONTINUOUS	7021 N (1578lbf)
ULTIMATE (UMS)	17553 N (3946lbf)

RECOMMENDED CLEARANCE (TO METAL PARTS)

PHASE TO GROUND	248 (9.8)
PHASE TO PHASE	294 (11.6)

- NOTES:
1. DIMENSIONS IN millimeters(inches) SUBJECT TO ±3% TOLERANCE
2. CLEARANCE AND INSULATION W/S VOLTAGE APPLY AT SEA LEVEL
3. ARRESTER SUITABLE FOR OPERATION AT ALTITUDES UP TO 3650m (12000ft)

DISCHARGE VOLTAGE (kV) FOR INDICATED IMPULSE TYPES AND CURRENT MAGNITUDES

FRONT OF WAVE	SWITCHING SURGE	8/20 LIGHTNING IMPULSE					
		1.5 kA	3 kA	5 kA	10 kA	20 kA	40 kA
10 kA	0.5 kA	124	129	134	140	150	165
152	116						



GE ENERGY
FORT EDWARD, N.Y., U.S.A.

SIZE
A

ANSI
STATION CLASS

ARRESTER
9L11ZTA060AS

DRAWN JBC DATE 04/14/2011

ISSUED DATE 04/14/2011

SCALE

SHEET 1 CONT ON -

DISTR. TO