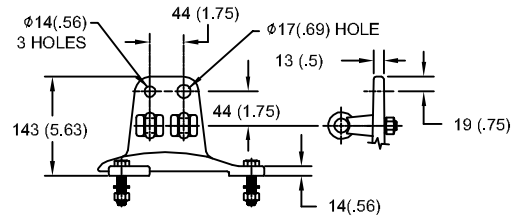


# 53kV MCOV

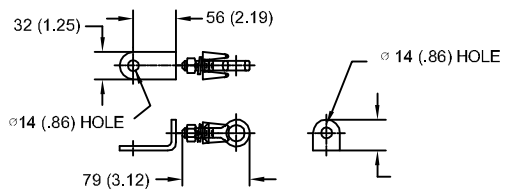
SIZE A	DWG NO 9L11ZTA066AS	SHT 1	REV
REV	DESCRIPTION	DATE	APPROVED

### LINE TERMINAL DETAIL

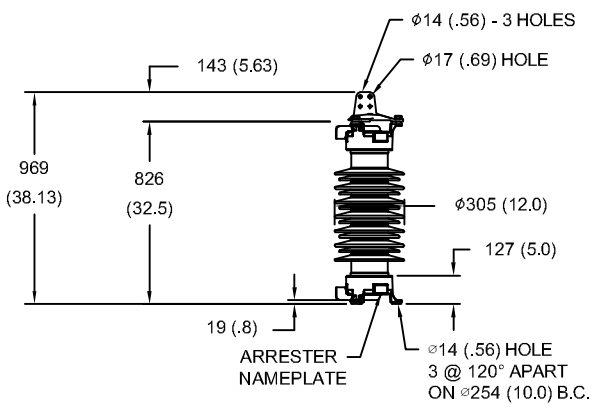


HDG 4-HOLE TERMINAL PAD  
TWO HDG TERMINALS  
SUITABLE FOR CU OR AL CONDUCTOR SIZE  
φ 7 (.25) - φ 21 (.81) DIA  
25 - 240 sq mm  
AWG#4 - 500 MCM

### GROUND TERMINAL DETAIL



HDG TERMINAL BRACKET  
ONE HDG TERMINAL  
SUITABLE FOR CU OR AL CONDUCTOR SIZE  
φ 7 (.25) - φ 21 (.81) DIA  
25 - 240 sq mm  
AWG#4 - 500 MCM



- NOTES:  
1. DIMENSIONS IN millimeters(inches) SUBJECT TO ±3% TOLERANCE  
2. CLEARANCE AND INSULATION W/S VOLTAGE APPLY AT SEA LEVEL  
3. ARRESTER SUITABLE FOR OPERATION AT ALTITUDES UP TO 3650m (12000ft)

CHARACTERISTICS	
RATED VOLTAGE	66 kVrms
MCOV	53 kVrms
MASS	82kg (180lb)
CREEPAGE DISTANCE	1905 (75.0)
LIGHTNING IMP W/S	358 kV
SWITCHING IMP W/S	310 kV
POWER FREQ W/S	186 kVrms
TOV 1s	79.0 kVrms
TOV 10s	75.5 kVrms
COG ABOVE BASE	438 (17.2)
HOUSING	GREY PORCELAIN

CANTILEVER FORCE	
MAXIMUM CONTINUOUS	7021 N (1578lbf)
ULTIMATE (UMS)	17553 N (3946lbf)

RECOMMENDED CLEARANCE (TO METAL PARTS)	
PHASE TO GROUND	277 (10.9)
PHASE TO PHASE	326 (12.9)

DISCHARGE VOLTAGE (kV) FOR INDICATED IMPULSE TYPES AND CURRENT MAGNITUDES							
FRONT OF WAVE	SWITCHING SURGE	8/20 LIGHTNING IMPULSE					
		1.5 kA	3 kA	5 kA	10 kA	20 kA	40 kA
10 kA	0.5 kA	137	142	147	154	165	181
167	127						

<b>GE ENERGY</b> FORT EDWARD, N.Y., U.S.A.	SIZE <b>A</b>	ANSI STATION CLASS	<b>ARRESTER</b> <b>9L11ZTA066AS</b>	SHEET 1	CONT ON -
	DRAWN JBC				
ISSUED	DATE 04/14/2011	SCALE			

DISTR. TO