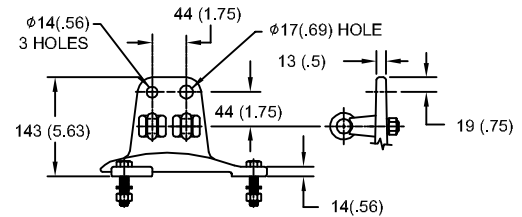


57kV MCOV

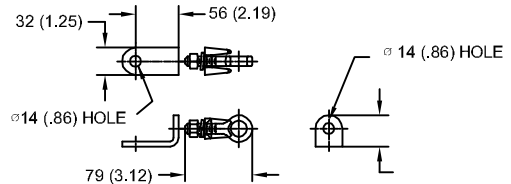
SIZE A	DWG NO 9L11ZTA072AS	SHT 1	REV
REV	DESCRIPTION	DATE	APPROVED

LINE TERMINAL DETAIL

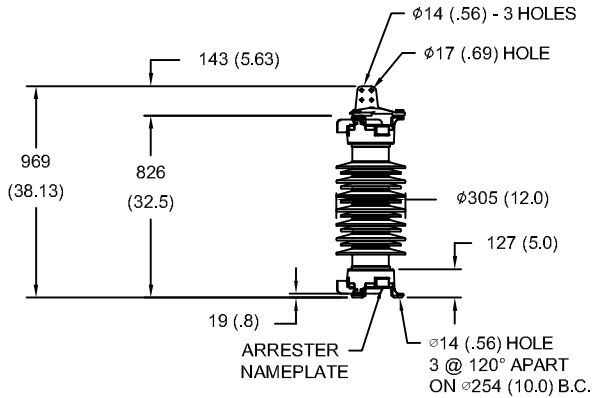


HDG 4-HOLE TERMINAL PAD
TWO HDG TERMINALS
SUITABLE FOR CU OR AL CONDUCTOR SIZE
φ 7 (.25) - φ 21 (.81) DIA
25 - 240 sq mm
AWG#4 - 500 MCM

GROUND TERMINAL DETAIL



HDG TERMINAL BRACKET
ONE HDG TERMINAL
SUITABLE FOR CU OR AL CONDUCTOR SIZE
φ 7 (.25) - φ 21 (.81) DIA
25 - 240 sq mm
AWG#4 - 500 MCM



- NOTES:
1. DIMENSIONS IN millimeters(inches) SUBJECT TO ±3% TOLERANCE
2. CLEARANCE AND INSULATION W/S VOLTAGE APPLY AT SEA LEVEL
3. ARRESTER SUITABLE FOR OPERATION AT ALTITUDES UP TO 3650m (12000ft)

CHARACTERISTICS	
RATED VOLTAGE	72 kVrms
MCOV	57 kVrms
MASS	83kg (183lb)
CREEPAGE DISTANCE	1905 (75.0)
LIGHTNING IMP W/S	358 kV
SWITCHING IMP W/S	310 kV
POWER FREQ W/S	186 kVrms
TOV 1s	85.0 kVrms
TOV 10s	81.0 kVrms
COG ABOVE BASE	438 (17.2)
HOUSING	GREY PORCELAIN

CANTILEVER FORCE	
MAXIMUM CONTINUOUS	7021 N (1578lbf)
ULTIMATE (UMS)	17553 N (3946lbf)

RECOMMENDED CLEARANCE (TO METAL PARTS)	
PHASE TO GROUND	301 (11.9)
PHASE TO PHASE	355 (14.0)

DISCHARGE VOLTAGE (kV) FOR INDICATED IMPULSE TYPES AND CURRENT MAGNITUDES							
FRONT OF WAVE	SWITCHING SURGE	8/20 LIGHTNING IMPULSE					
		1.5 kA	3 kA	5 kA	10 kA	20 kA	40 kA
10 kA	0.5 kA	147	153	159	166	178	195
180	137						



GE ENERGY
FORT EDWARD, N.Y., U.S.A.

SIZE

A

ANSI
STATION CLASS

ARRESTER
9L11ZTA072AS

DRAWN JBC DATE 04/14/2011

ISSUED DATE 04/14/2011

SCALE

SHEET 1 CONT ON -

DISTR. TO