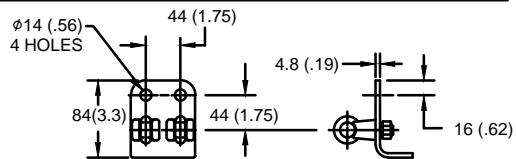


SIZE A	DWG NO 911ZTA090AS	SHT 1	REV
REV	DESCRIPTION	DATE	APPROVED

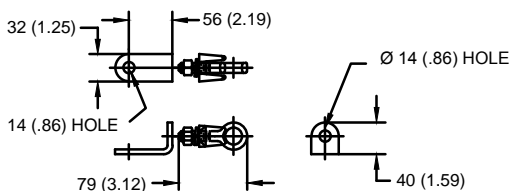
**GE Tranquell®  
74 kV MCOV**

**LINE TERMINAL DETAIL**

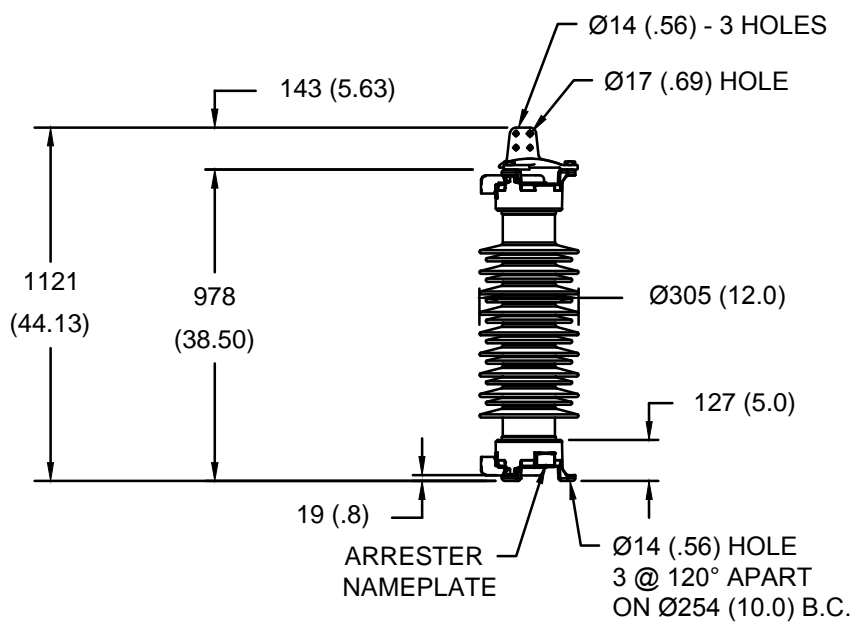


HDG 4-HOLE TERMINAL PAD,  
TWO HDG TERMINALS,  
SUITABLE FOR Cu OR Al CONDUCTOR SIZE  
φ 7 (.25) - φ 21 (.81) DIA  
25 - 240 sq mm  
AWG#4 - 500 MCM

**GROUND TERMINAL DETAIL**



HDG TERMINAL BRACKET  
ONE HDG TERMINAL  
SUITABLE FOR Cu OR Al CONDUCTOR SIZE  
φ 7 (.25) - φ 21 (.81) DIA  
25 - 240 sq mm  
AWG#4 - 500 MCM



CHARACTERISTICS	
RATED VOLTAGE	90 kVrms
MCOV	74 kVrms
MASS	99kg (217lb)
CREEPAGE DISTANCE	2540 (100.0)
LIGHTNING IMP W/S	436 kV
SWITCHING IMP W/S	388 kV
POWER FREQ W/S	216 kVrms
TOV 1s	104 kVrms
TOV 10s	100 kVrms
COG ABOVE BASE	514 (20.2)
HOUSING	GREY PORCELAIN

CANTILEVER FORCE	
MAXIMUM CONTINUOUS	6067 N (1364lbf)
ULTIMATE (UMS)	15166 N (3409lbf)

RECOMMENDED CLEARANCE	
PHASE TO GROUND	376 (14.8)
PHASE TO PHASE	439 (17.3)

NOTES:  
1. DIMENSIONS IN millimeters(inches) SUBJECT TO ±3% TOLERANCE  
2. CLEARANCE AND INSULATION W/S VOLTAGE APPLY AT SEA LEVEL  
3. ARRESTER SUITABLE FOR OPERATION AT ALTITUDES UP TO 4380 m (14370 ft)  
4. PACKAGED IN A CORRUGATED BOX.

DISCHARGE VOLTAGE (kV) FOR INDICATED IMPULSE TYPES AND CURRENT MAGNITUDES							
FRONT OF WAVE	SWITCHING SURGE	8/20 LIGHTNING IMPULSE					
10 kA	0.5 kA	1.5 kA	3 kA	5 kA	10 kA	20 kA	40 kA
221	167	180	187	194	203	217	239

**GE ENERGY**  
FORT EDWARD, N.Y., U.S.A.

DRAWN: DCS      DATE: 09/17/2015

ISSUED:              DATE: 09/17/2015

SIZE: **A**

ANSI/IEEE C62.11  
STATION CLASS

SCALE:

**ARRESTER**  
**9L11ZTA090AS**

SHEET 1      CONT ON -

DISTR. TO