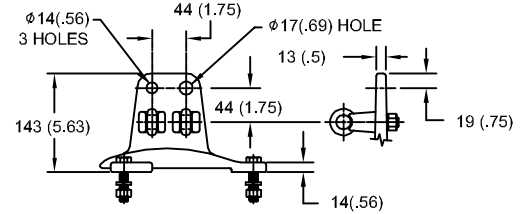


# 76kV MCOV

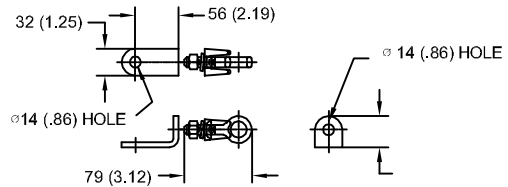
SIZE A	DWG NO 9L11ZTA096AS	SHT 1	REV
REV	DESCRIPTION	DATE	APPROVED

### LINE TERMINAL DETAIL

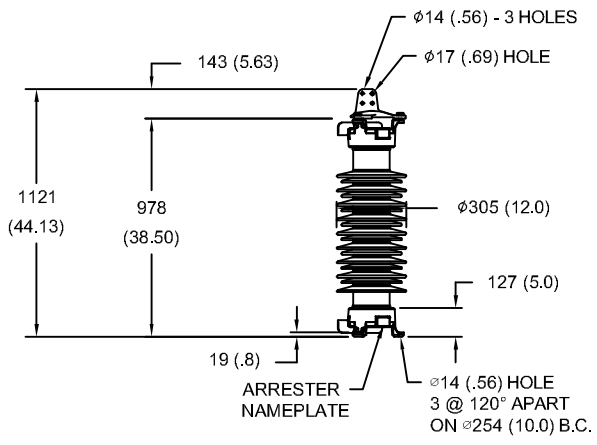


HDG 4-HOLE TERMINAL PAD  
TWO HDG TERMINALS  
SUITABLE FOR CU OR AL CONDUCTOR SIZE  
φ 7 (.25) - φ 21 (.81) DIA  
25 - 240 sq mm  
AWG#4 - 500 MCM

### GROUND TERMINAL DETAIL



HDG TERMINAL BRACKET  
ONE HDG TERMINAL  
SUITABLE FOR CU OR AL CONDUCTOR SIZE  
φ 7 (.25) - φ 21 (.81) DIA  
25 - 240 sq mm  
AWG#4 - 500 MCM



ARRESTER NAMEPLATE  
φ14 (.56) HOLE  
3 @ 120° APART  
ON φ254 (10.0) B.C.

- NOTES:  
1. DIMENSIONS IN millimeters(inches) SUBJECT TO ±3% TOLERANCE  
2. CLEARANCE AND INSULATION W/S VOLTAGE APPLY AT SEA LEVEL  
3. ARRESTER SUITABLE FOR OPERATION AT ALTITUDES UP TO 3650m (12000ft)

CHARACTERISTICS	
RATED VOLTAGE	96 kVrms
MCOV	76 kVrms
MASS	100kg (220lb)
CREEPAGE DISTANCE	2540 (100.0)
LIGHTNING IMP W/S	434 kV
SWITCHING IMP W/S	379 kV
POWER FREQ W/S	227 kVrms
TOV 1s	113 kVrms
TOV 10s	108 kVrms
COG ABOVE BASE	513 (20.2)
HOUSING	GREY PORCELAIN

CANTILEVER FORCE	
MAXIMUM CONTINUOUS	6067 N (1364lbf)
ULTIMATE (UMS)	15166 N (3409lbf)

RECOMMENDED CLEARANCE (TO METAL PARTS)	
PHASE TO GROUND	413 (16.3)
PHASE TO PHASE	481 (18.9)

DISCHARGE VOLTAGE (kV) FOR INDICATED IMPULSE TYPES AND CURRENT MAGNITUDES							
FRONT OF WAVE	SWITCHING SURGE	8/20 LIGHTNING IMPULSE					
		1.5 kA	3 kA	5 kA	10 kA	20 kA	40 kA
10 kA	0.5 kA	196	204	211	221	236	260

<b>GE ENERGY</b> FORT EDWARD, N.Y., U.S.A.	SIZE <b>A</b>	ANSI STATION CLASS	<b>ARRESTER</b> <b>9L11ZTA096AS</b>	SHEET 1	CONT ON -
	DRAWN JBC				
ISSUED	DATE 04/14/2011				

DISTR. TO