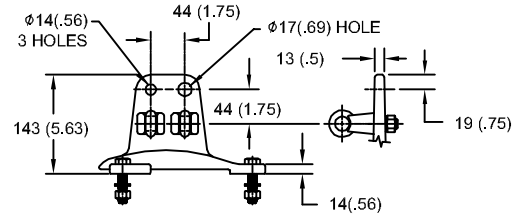


88kV MCOV

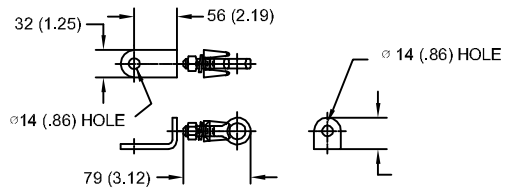
SIZE A	DWG NO 9L11ZTA108AS	SHT 1	REV
REV	DESCRIPTION	DATE	APPROVED

LINE TERMINAL DETAIL

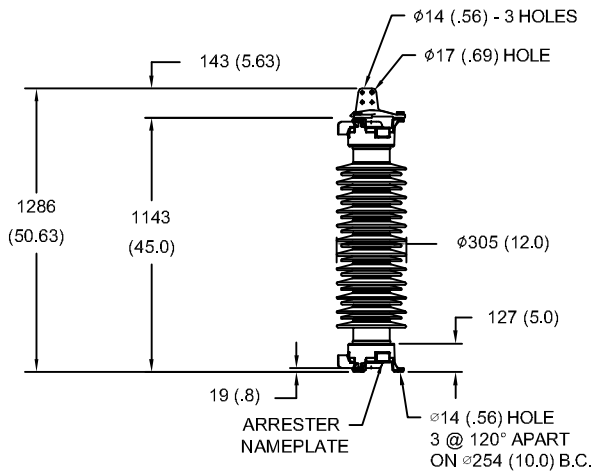


HDG 4-HOLE TERMINAL PAD
TWO HDG TERMINALS
SUITABLE FOR CU OR AL CONDUCTOR SIZE
φ 7 (.25) - φ 21 (.81) DIA
25 - 240 sq mm
AWG#4 - 500 MCM

GROUND TERMINAL DETAIL



HDG TERMINAL BRACKET
ONE HDG TERMINAL
SUITABLE FOR CU OR AL CONDUCTOR SIZE
φ 7 (.25) - φ 21 (.81) DIA
25 - 240 sq mm
AWG#4 - 500 MCM



CHARACTERISTICS

RATED VOLTAGE	108 kVrms
MCOV	88 kVrms
MASS	117kg (257lb)
CREEPAGE DISTANCE	3207 (126.3)
LIGHTNING IMP W/S	520 kV
SWITCHING IMP W/S	455 kV
POWER FREQ W/S	273 kVrms
TOV 1s	131 kVrms
TOV 10s	125 kVrms
COG ABOVE BASE	596 (23.5)
HOUSING	GREY PORCELAIN

CANTILEVER FORCE	
MAXIMUM CONTINUOUS	5288 N (1189lbf)
ULTIMATE (UMS)	13219 N (2972lbf)

RECOMMENDED CLEARANCE (TO METAL PARTS)	
PHASE TO GROUND	484 (19.1)
PHASE TO PHASE	561 (22.1)

- NOTES:
1. DIMENSIONS IN millimeters(inches) SUBJECT TO ±3% TOLERANCE
2. CLEARANCE AND INSULATION W/S VOLTAGE APPLY AT SEA LEVEL
3. ARRESTER SUITABLE FOR OPERATION AT ALTITUDES UP TO 3650m (12000ft)

DISCHARGE VOLTAGE (kV) FOR INDICATED IMPULSE TYPES AND CURRENT MAGNITUDES							
FRONT OF WAVE	SWITCHING SURGE	8/20 LIGHTNING IMPULSE					
		1.5 kA	3 kA	5 kA	10 kA	20 kA	40 kA
10 kA	0.5 kA	226	235	243	255	273	300
277	210						



GE ENERGY
FORT EDWARD, N.Y., U.S.A.

SIZE

A

ANSI
STATION CLASS

ARRESTER
9L11ZTA108AS

DRAWN JBC DATE 04/14/2011

ISSUED DATE 04/14/2011

SCALE

SHEET 1 CONT ON -

DISTR. TO