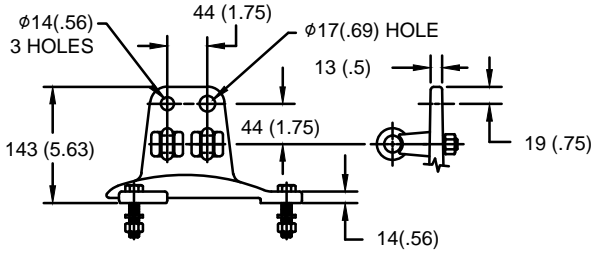


| | | | |
|-----------|------------------------|----------|----------|
| SIZE A | DWG NO 911ZTA108ASB | SHT 1 | REV |
| REV | DESCRIPTION | DATE | APPROVED |

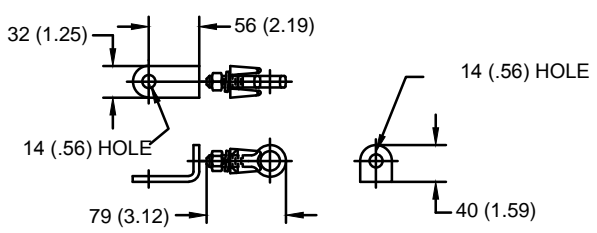
GE Tranquell® 88 kV MCOV

LINE TERMINAL DETAIL

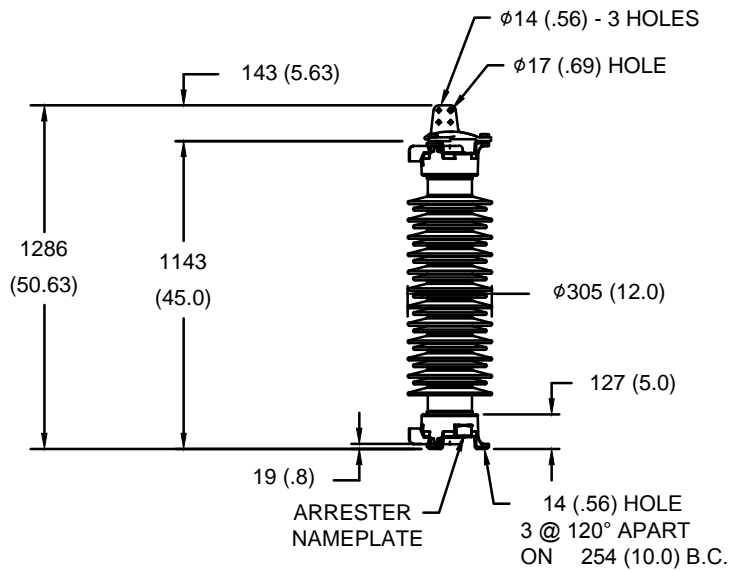


HDG 4-HOLE TERMINAL PAD
TWO TIN-PLATED TERMINALS
SUITABLE FOR Cu OR Al CONDUCTOR SIZE
φ11 (.42) - φ29 (1.15) DIA
70 - 500 sq mm
2/0 - 1000 MCM

GROUND TERMINAL DETAIL



HDG TERMINAL BRACKET
ONE TIN-PLATED TERMINAL
SUITABLE FOR Cu OR Al CONDUCTOR SIZE
φ11 (.42) - φ29 (1.15)
70 - 500 sq mm
2/0 - 1000 MCM



| CHARACTERISTICS | |
|-------------------|----------------|
| RATED VOLTAGE | 108 kVrms |
| MCOV | 88 kVrms |
| MASS | 117kg (257lb) |
| CREEPAGE DISTANCE | 3207 (126.3) |
| LIGHTNING IMP W/S | 512 kV |
| SWITCHING IMP W/S | 442 kV |
| POWER FREQ W/S | 300 kVrms |
| TOV 1s | 131 kVrms |
| TOV 10s | 125 kVrms |
| COG ABOVE BASE | 596 (23.5) |
| HOUSING | GREY PORCELAIN |

| CANTILEVER FORCE | |
|--------------------|-------------------|
| MAXIMUM CONTINUOUS | 5288 N (1189lbf) |
| ULTIMATE (UMS) | 13219 N (2972lbf) |

| RECOMMENDED CLEARANCE (TO METAL PARTS) | |
|--|--------------|
| PHASE TO GROUND | 566.5 (22.3) |
| PHASE TO PHASE | 726.1 (28.6) |

NOTES:
1. DIMENSIONS IN millimeters(inches) SUBJECT TO ±3% TOLERANCE
2. CLEARANCE AND INSULATION W/S VOLTAGE APPLY AT SEA LEVEL
3. ARRESTER SUITABLE FOR OPERATION AT ALTITUDES UP TO 4380 m (14370 ft)
4. PACKAGED IN A CORRUGATED BOX.

| DISCHARGE VOLTAGE (kV) FOR INDICATED IMPULSE TYPES AND CURRENT MAGNITUDES | | | | | | | |
|---|-----------------|------------------------|------|------|-------|-------|-------|
| FRONT OF WAVE | SWITCHING SURGE | 8/20 LIGHTNING IMPULSE | | | | | |
| 10 kA | 0.5 kA | 1.5 kA | 3 kA | 5 kA | 10 kA | 20 kA | 40 kA |
| 277 | 210 | 226 | 235 | 243 | 255 | 273 | 300 |

GE ENERGY
FORT EDWARD, N.Y., U.S.A.

| | | | |
|--------|-----|------|------------|
| DRAWN | DCS | DATE | 01/29/2015 |
| ISSUED | | DATE | 01/29/2015 |

SIZE
A

ANSI/IEEE C62.11
STATION CLASS

SCALE

ARRESTER

9L11ZTA108ASB

| | | | |
|-------|---|------|----|
| SHEET | 1 | CONT | ON |
| | | | - |

DISTR. TO