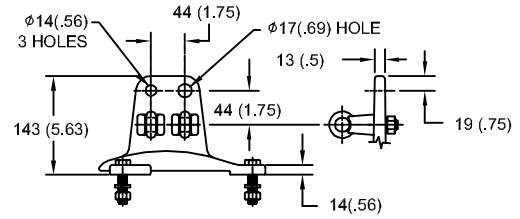


98kV MCOV

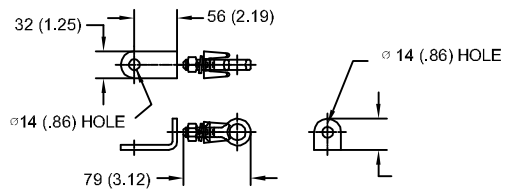
SIZE A	DWG NO 9L11ZTA120AS	SHT 1	REV
REV	DESCRIPTION	DATE	APPROVED

LINE TERMINAL DETAIL

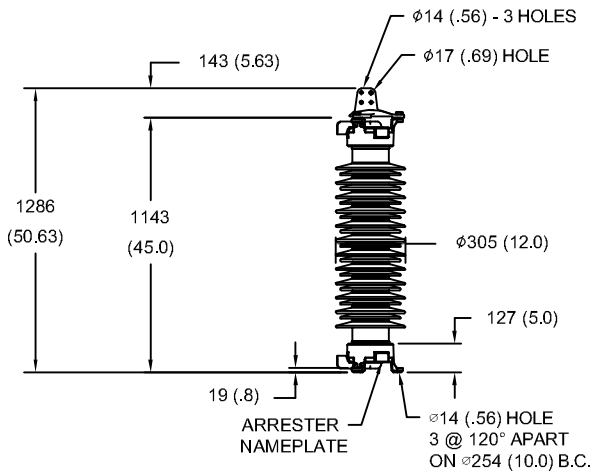


HDG 4-HOLE TERMINAL PAD
TWO HDG TERMINALS
SUITABLE FOR CU OR AL CONDUCTOR SIZE
φ 7 (.25) - φ 21 (.81) DIA
25 - 240 sq mm
AWG#4 - 500 MCM

GROUND TERMINAL DETAIL



HDG TERMINAL BRACKET
ONE HDG TERMINAL
SUITABLE FOR CU OR AL CONDUCTOR SIZE
φ 7 (.25) - φ 21 (.81) DIA
25 - 240 sq mm
AWG#4 - 500 MCM



- NOTES:
1. DIMENSIONS IN millimeters(inches) SUBJECT TO ±3% TOLERANCE
2. CLEARANCE AND INSULATION W/S VOLTAGE APPLY AT SEA LEVEL
3. ARRESTER SUITABLE FOR OPERATION AT ALTITUDES UP TO 3650m (12000ft)

CHARACTERISTICS	
RATED VOLTAGE	120 kVrms
MCOV	98 kVrms
MASS	119kg (263lb)
CREEPAGE DISTANCE	3207 (126.3)
LIGHTNING IMP W/S	520 kV
SWITCHING IMP W/S	455 kV
POWER FREQ W/S	273 kVrms
TOV 1s	146 kVrms
TOV 10s	139 kVrms
COG ABOVE BASE	595 (23.4)
HOUSING	GREY PORCELAIN

CANTILEVER FORCE	
MAXIMUM CONTINUOUS	5288 N (1189lbf)
ULTIMATE (UMS)	13219 N (2972lbf)

RECOMMENDED CLEARANCE (TO METAL PARTS)	
PHASE TO GROUND	543 (21.4)
PHASE TO PHASE	628 (24.7)

DISCHARGE VOLTAGE (kV) FOR INDICATED IMPULSE TYPES AND CURRENT MAGNITUDES							
FRONT OF WAVE	SWITCHING SURGE	8/20 LIGHTNING IMPULSE					
10 kA	1 kA	1.5 kA	3 kA	5 kA	10 kA	20 kA	40 kA
308	241	252	262	271	284	304	334



GE ENERGY
FORT EDWARD, N.Y., U.S.A.

SIZE

A

ANSI
STATION CLASS

ARRESTER
9L11ZTA120AS

DRAWN JBC DATE 04/14/2011

ISSUED DATE 04/14/2011

SCALE

SHEET 1 CONT ON -

DISTR. TO