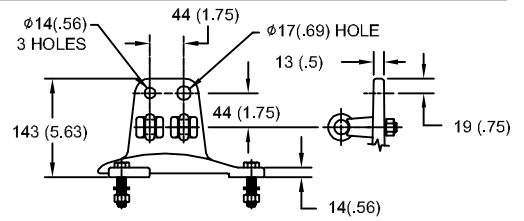


140kV MCOV

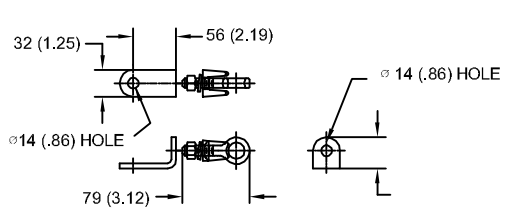
SIZE A	DWG NO 9L11ZTA172AS	SHT 1	REV
REV	DESCRIPTION	DATE	APPROVED

LINE TERMINAL DETAIL

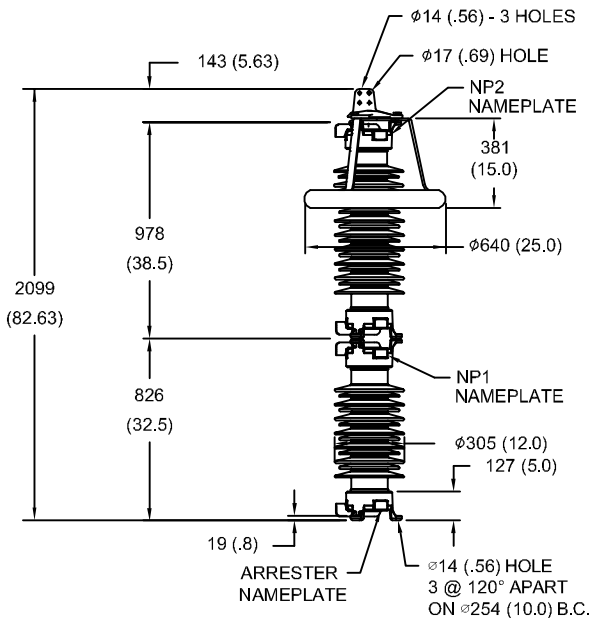


HDG 4-HOLE TERMINAL PAD
TWO HDG TERMINALS
SUITABLE FOR CU OR AL CONDUCTOR SIZE
φ 7 (.25) - φ 21 (.81) DIA
25 - 240 sq mm
AWG#4 - 500 MCM

GROUND TERMINAL DETAIL



HDG TERMINAL BRACKET
ONE HDG TERMINAL
SUITABLE FOR CU OR AL CONDUCTOR SIZE
φ 7 (.25) - φ 21 (.81) DIA
25 - 240 sq mm
AWG#4 - 500 MCM



CHARACTERISTICS

RATED VOLTAGE	172 kVrms
MCOV	140 kVrms
MASS	188kg (414lb)
CREEPAGE DISTANCE	4445 (175.0)
LIGHTNING IMP W/S	706 kV
SWITCHING IMP W/S	612 kV
POWER FREQ W/S	367 kVrms
TOV 1s	209 kVrms
TOV 10s	199 kVrms
COG ABOVE BASE	970 (38.2)
HOUSING	GREY PORCELAIN

CANTILEVER FORCE

MAXIMUM CONTINUOUS	3494 N (785lbf)
ULTIMATE (UMS)	8734 N (1963lbf)

RECOMMENDED CLEARANCE (TO METAL PARTS)

PHASE TO GROUND	793 (31.2)
PHASE TO PHASE	910 (35.8)

- NOTES:
1. DIMENSIONS IN millimeters(inches) SUBJECT TO ±3% TOLERANCE
2. CLEARANCE AND INSULATION W/S VOLTAGE APPLY AT SEA LEVEL
3. ARRESTER SUITABLE FOR OPERATION AT ALTITUDES UP TO 3550m (11600ft)

DISCHARGE VOLTAGE (kV) FOR INDICATED IMPULSE TYPES AND CURRENT MAGNITUDES

FRONT OF WAVE	SWITCHING SURGE	8/20 LIGHTNING IMPULSE					
		1.5 kA	3 kA	5 kA	10 kA	20 kA	40 kA
10 kA	1 kA	360	374	387	406	434	477



GE ENERGY
FORT EDWARD, N.Y., U.S.A.

SIZE

A

ANSI
STATION CLASS

ARRESTER
9L11ZTA172AS

DRAWN JBC DATE 04/14/2011

ISSUED DATE 04/14/2011

SCALE

SHEET 1 CONT ON -

DISTR. TO