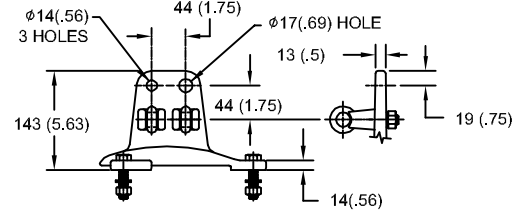


144kV MCOV

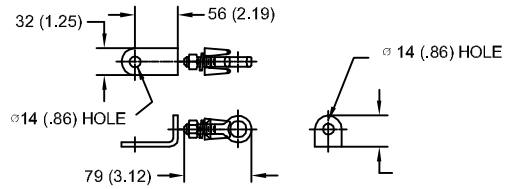
SIZE A	DWG NO 9L11ZTA180AS	SHT 1	REV
REV	DESCRIPTION	DATE	APPROVED

LINE TERMINAL DETAIL

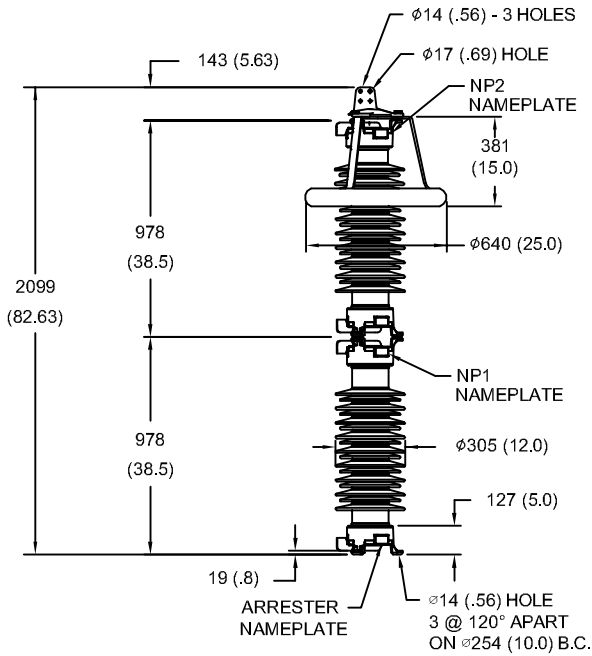


HDG 4-HOLE TERMINAL PAD
TWO HDG TERMINALS
SUITABLE FOR CU OR AL CONDUCTOR SIZE
 $\phi 7 (.25) - \phi 21 (.81)$ DIA
25 - 240 sq mm
AWG#4 - 500 MCM

GROUND TERMINAL DETAIL



HDG TERMINAL BRACKET
ONE HDG TERMINAL
SUITABLE FOR CU OR AL CONDUCTOR SIZE
 $\phi 7 (.25) - \phi 21 (.81)$ DIA
25 - 240 sq mm
AWG#4 - 500 MCM



CHARACTERISTICS	
RATED VOLTAGE	180 kVrms
MCOV	144 kVrms
MASS	201kg (442lb)
CREEPAGE DISTANCE	5080 (200.0)
LIGHTNING IMP W/S	781 kV
SWITCHING IMP W/S	671 kV
POWER FREQ W/S	403 kVrms
TOV 1s	215 kVrms
TOV 10s	205 kVrms
COG ABOVE BASE	1046 (41.2)
HOUSING	GREY PORCELAIN

CANTILEVER FORCE	
MAXIMUM CONTINUOUS	3240 N (728lbf)
ULTIMATE (UMS)	8100 N (1821lbf)

RECOMMENDED CLEARANCE (TO METAL PARTS)	
PHASE TO GROUND	818 (32.2)
PHASE TO PHASE	939 (37.0)

NOTES:
1. DIMENSIONS IN millimeters(inches) SUBJECT TO $\pm 3\%$ TOLERANCE
2. CLEARANCE AND INSULATION W/S VOLTAGE APPLY AT SEA LEVEL
3. ARRESTER SUITABLE FOR OPERATION AT ALTITUDES UP TO 3650m (12000ft)

DISCHARGE VOLTAGE (kV) FOR INDICATED IMPULSE TYPES AND CURRENT MAGNITUDES							
FRONT OF WAVE	SWITCHING SURGE	8/20 LIGHTNING IMPULSE					
10 kA	1 kA	1.5 kA	3 kA	5 kA	10 kA	20 kA	40 kA
454	355	370	385	398	418	447	491



GE ENERGY
FORT EDWARD, N.Y., U.S.A.

SIZE
A

ANSI
STATION CLASS

ARRESTER
9L11ZTA180AS

DRAWN JBC DATE 04/14/2011

ISSUED DATE 04/14/2011

SCALE

SHEET 1 CONT ON -

DISTR. TO