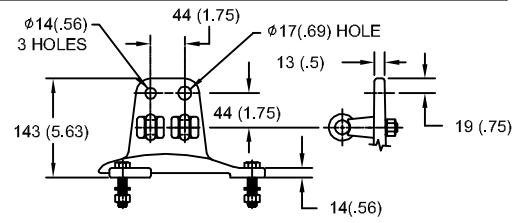


152kV MCOV

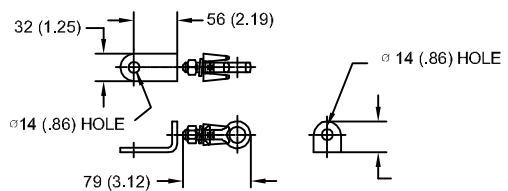
SIZE A	DWG NO 9L11ZTA192AS	SHT 1	REV
REV	DESCRIPTION	DATE	APPROVED

LINE TERMINAL DETAIL

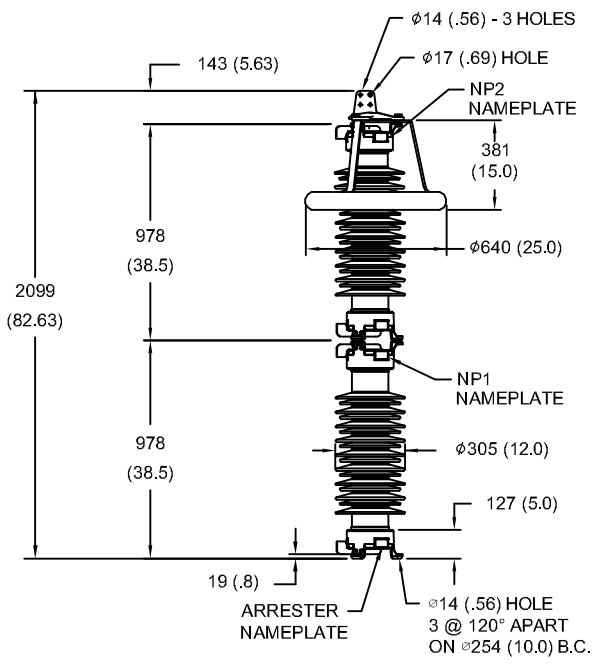


HDG 4-HOLE TERMINAL PAD
 TWO HDG TERMINALS
 SUITABLE FOR CU OR AL CONDUCTOR SIZE
 φ 7 (.25) - φ 21 (.81) DIA
 25 - 240 sq mm
 AWG#4 - 500 MCM

GROUND TERMINAL DETAIL



HDG TERMINAL BRACKET
 ONE HDG TERMINAL
 SUITABLE FOR CU OR AL CONDUCTOR SIZE
 φ 7 (.25) - φ 21 (.81) DIA
 25 - 240 sq mm
 AWG#4 - 500 MCM



- NOTES:
 1. DIMENSIONS IN millimeters(inches) SUBJECT TO ±3% TOLERANCE
 2. CLEARANCE AND INSULATION W/S VOLTAGE APPLY AT SEA LEVEL
 3. ARRESTER SUITABLE FOR OPERATION AT ALTITUDES UP TO 3650m (12000ft)

CHARACTERISTICS	
RATED VOLTAGE	192 kVrms
MCOV	152 kVrms
MASS	203kg (446lb)
CREEPAGE DISTANCE	5080 (200.0)
LIGHTNING IMP W/S	781 kV
SWITCHING IMP W/S	671 kV
POWER FREQ W/S	403 kVrms
TOV 1s	226 kVrms
TOV 10s	216 kVrms
COG ABOVE BASE	1046 (41.2)
HOUSING	GREY PORCELAIN

CANTILEVER FORCE	
MAXIMUM CONTINUOUS	3240 N (728lbf)
ULTIMATE (UMS)	8100 N (1821lbf)

RECOMMENDED CLEARANCE (TO METAL PARTS)	
PHASE TO GROUND	864 (34.0)
PHASE TO PHASE	991 (39.0)

DISCHARGE VOLTAGE (kV) FOR INDICATED IMPULSE TYPES AND CURRENT MAGNITUDES							
FRONT OF WAVE	SWITCHING SURGE	8/20 LIGHTNING IMPULSE					
		1.5 kA	3 kA	5 kA	10 kA	20 kA	40 kA
10 kA	1 kA	391	406	420	441	471	518
479	374						

GE ENERGY FORT EDWARD, N.Y., U.S.A.	SIZE A	ANSI STATION CLASS	ARRESTER 9L11ZTA192AS	SHEET 1	CONT ON -
	DRAWN JBC				
ISSUED	DATE 04/14/2011	SCALE			

DISTR. TO