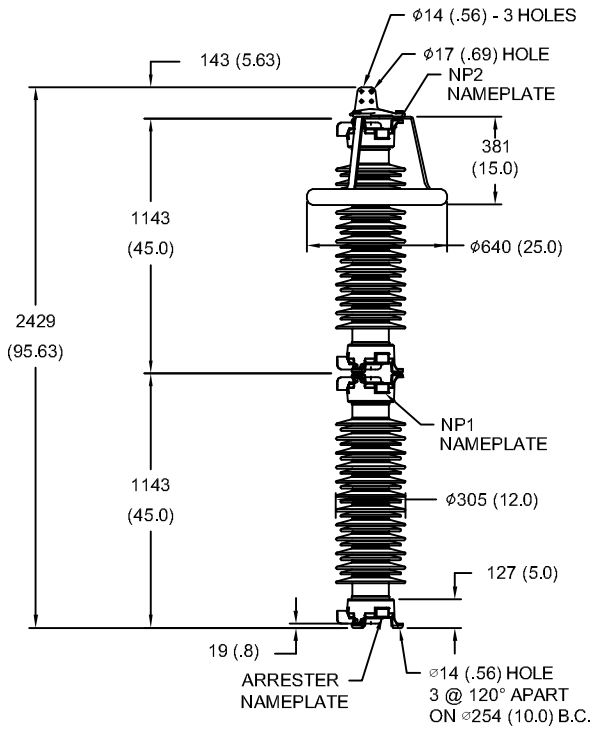
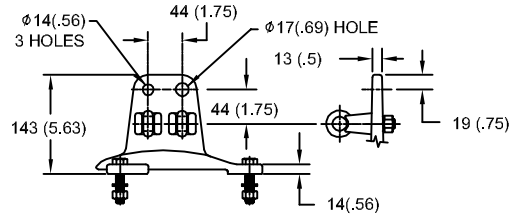


190kV MCOV

SIZE A	DWG NO 9L11ZTA240AS	SHT 1	REV
REV	DESCRIPTION	DATE	APPROVED

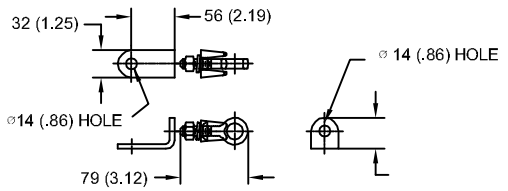


LINE TERMINAL DETAIL



HDG 4-HOLE TERMINAL PAD
TWO HDG TERMINALS
SUITABLE FOR CU OR AL CONDUCTOR SIZE
φ 7 (.25) - φ 21 (.81) DIA
25 - 240 sq mm
AWG#4 - 500 MCM

GROUND TERMINAL DETAIL



HDG TERMINAL BRACKET
ONE HDG TERMINAL
SUITABLE FOR CU OR AL CONDUCTOR SIZE
φ 7 (.25) - φ 21 (.81) DIA
25 - 240 sq mm
AWG#4 - 500 MCM

CHARACTERISTICS

RATED VOLTAGE	240 kVrms
MCOV	190 kVrms
MASS	240kg (529lb)
CREEPAGE DISTANCE	6414 (252.5)
LIGHTNING IMP W/S	944 kV
SWITCHING IMP W/S	796 kV
POWER FREQ W/S	477 kVrms
TOV 1s	283 kVrms
TOV 10s	270 kVrms
COG ABOVE BASE	1208 (47.5)
HOUSING	GREY PORCELAIN

CANTILEVER FORCE

MAXIMUM CONTINUOUS	2800 N (629lbf)
ULTIMATE (UMS)	6999 N (1573lbf)

RECOMMENDED CLEARANCE (TO METAL PARTS)

PHASE TO GROUND	1089 (42.9)
PHASE TO PHASE	1245 (49.0)

- NOTES:
1. DIMENSIONS IN millimeters(inches) SUBJECT TO ±3% TOLERANCE
2. CLEARANCE AND INSULATION W/S VOLTAGE APPLY AT SEA LEVEL
3. ARRESTER SUITABLE FOR OPERATION AT ALTITUDES UP TO 3400m (11200ft)

DISCHARGE VOLTAGE (kV) FOR INDICATED IMPULSE TYPES AND CURRENT MAGNITUDES

FRONT OF WAVE	SWITCHING SURGE	8/20 LIGHTNING IMPULSE					
		1.5 kA	3 kA	5 kA	10 kA	20 kA	40 kA
10 kA	1 kA	488	507	525	551	588	647
598	467						



GE ENERGY
FORT EDWARD, N.Y., U.S.A.

SIZE

A

ANSI
STATION CLASS

ARRESTER
9L11ZTA240AS

DRAWN JBC DATE 04/14/2011

ISSUED DATE 04/14/2011

SCALE

SHEET 1 CONT ON -

DISTR. TO