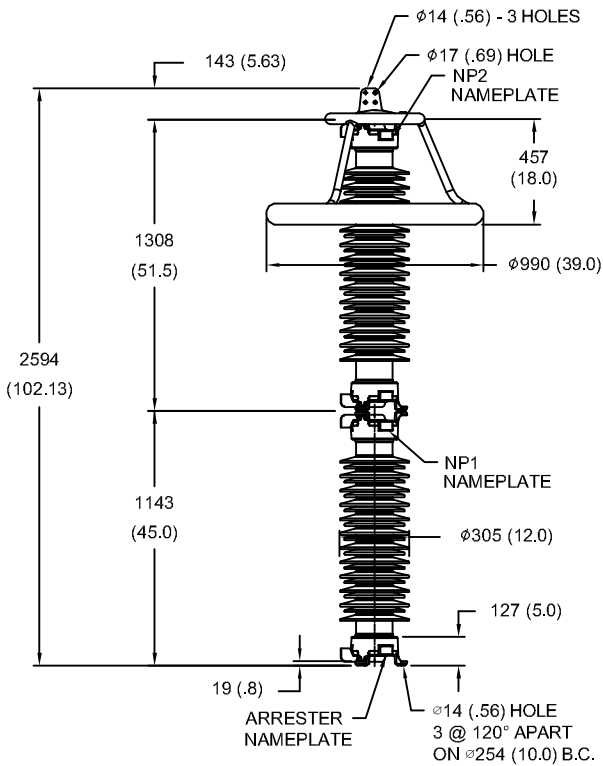
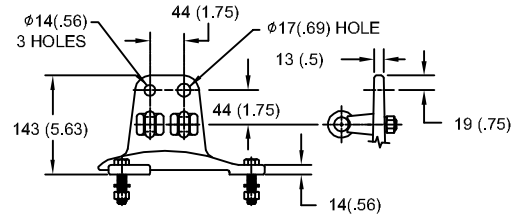


209kV MCOV

SIZE A	DWG NO 9L11ZTA258AS	SHT 1	REV
REV	DESCRIPTION	DATE	APPROVED

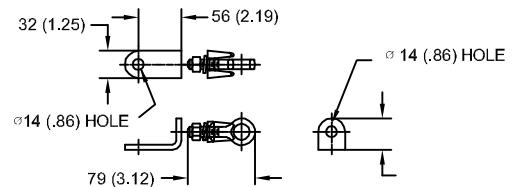


LINE TERMINAL DETAIL



HDG 4-HOLE TERMINAL PAD
TWO HDG TERMINALS
SUITABLE FOR CU OR AL CONDUCTOR SIZE
φ 7 (.25) - φ 21 (.81) DIA
25 - 240 sq mm
AWG#4 - 500 MCM

GROUND TERMINAL DETAIL



HDG TERMINAL BRACKET
ONE HDG TERMINAL
SUITABLE FOR CU OR AL CONDUCTOR SIZE
φ 7 (.25) - φ 21 (.81) DIA
25 - 240 sq mm
AWG#4 - 500 MCM

CHARACTERISTICS	
RATED VOLTAGE	258 kVrms
MCOV	209 kVrms
MASS	261kg (574lb)
CREEPAGE DISTANCE	7081 (278.8)
LIGHTNING IMP W/S	1004 kV
SWITCHING IMP W/S	839 kV
POWER FREQ W/S	503 kVrms
TOV 1s	311 kVrms
TOV 10s	297 kVrms
COG ABOVE BASE	1304 (51.3)
HOUSING	GREY PORCELAIN

CANTILEVER FORCE	
MAXIMUM CONTINUOUS	2621 N (589lbf)
ULTIMATE (UMS)	6553 N (1473lbf)

RECOMMENDED CLEARANCE (TO METAL PARTS)	
PHASE TO GROUND	1202 (47.3)
PHASE TO PHASE	1373 (54.1)

- NOTES:
1. DIMENSIONS IN millimeters(inches) SUBJECT TO ±3% TOLERANCE
2. CLEARANCE AND INSULATION W/S VOLTAGE APPLY AT SEA LEVEL
3. ARRESTER SUITABLE FOR OPERATION AT ALTITUDES UP TO 2950m (9700ft)

DISCHARGE VOLTAGE (kV) FOR INDICATED IMPULSE TYPES AND CURRENT MAGNITUDES							
FRONT OF WAVE	SWITCHING SURGE	8/20 LIGHTNING IMPULSE					
		1.5 kA	3 kA	5 kA	10 kA	20 kA	40 kA
10 kA	2 kA	537	558	577	606	647	712
657	532						



GE ENERGY
FORT EDWARD, N.Y., U.S.A.

SIZE

A

ANSI
STATION CLASS

ARRESTER
9L11ZTA258AS

DRAWN JBC DATE 04/14/2011

ISSUED DATE 04/14/2011

SCALE

SHEET 1 CONT ON -

DISTR. TO