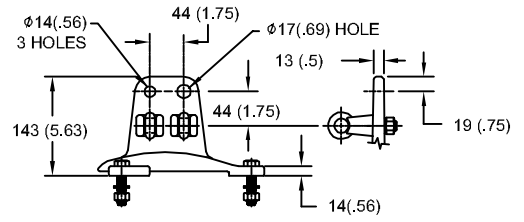


# 243kV MCOV

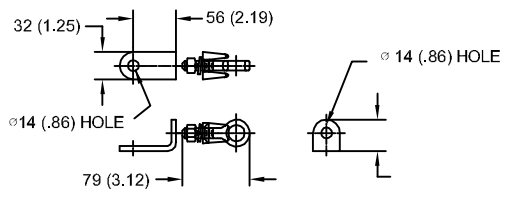
SIZE A	DWG NO 9L11ZTA300AS	SHT 1	REV
REV	DESCRIPTION	DATE	APPROVED

### LINE TERMINAL DETAIL

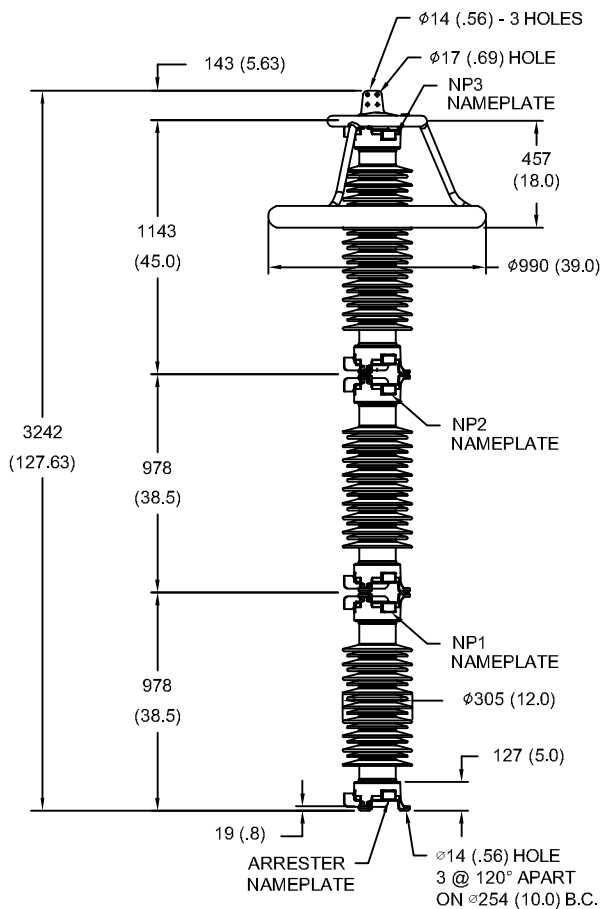


HDG 4-HOLE TERMINAL PAD  
TWO HDG TERMINALS  
SUITABLE FOR CU OR AL CONDUCTOR SIZE  
φ 7 (.25) - φ 21 (.81) DIA  
25 - 240 sq mm  
AWG#4 - 500 MCM

### GROUND TERMINAL DETAIL



HDG TERMINAL BRACKET  
ONE HDG TERMINAL  
SUITABLE FOR CU OR AL CONDUCTOR SIZE  
φ 7 (.25) - φ 21 (.81) DIA  
25 - 240 sq mm  
AWG#4 - 500 MCM



- NOTES:  
1. DIMENSIONS IN millimeters(inches) SUBJECT TO ±3% TOLERANCE  
2. CLEARANCE AND INSULATION W/S VOLTAGE APPLY AT SEA LEVEL  
3. ARRESTER SUITABLE FOR OPERATION AT ALTITUDES UP TO 3650m (12000ft)

CHARACTERISTICS	
RATED VOLTAGE	300 kVrms
MCOV	243 kVrms
MASS	319kg (702lb)
CREEPAGE DISTANCE	8287 (326.3)
LIGHTNING IMP W/S	1288 kV
SWITCHING IMP W/S	1029 kV
POWER FREQ W/S	618 kVrms
TOV 1s	362 kVrms
TOV 10s	346 kVrms
COG ABOVE BASE	1646 (64.8)
HOUSING	GREY PORCELAIN

CANTILEVER FORCE	
MAXIMUM CONTINUOUS	2098 N (472lbf)
ULTIMATE (UMS)	5244 N (1179lbf)

RECOMMENDED CLEARANCE (TO METAL PARTS)	
PHASE TO GROUND	1406 (55.4)
PHASE TO PHASE	1603 (63.1)

DISCHARGE VOLTAGE (kV) FOR INDICATED IMPULSE TYPES AND CURRENT MAGNITUDES							
FRONT OF WAVE	SWITCHING SURGE	8/20 LIGHTNING IMPULSE					
		1.5 kA	3 kA	5 kA	10 kA	20 kA	40 kA
20 kA	2 kA	624	649	672	705	753	828
847	619						

<b>GE ENERGY</b> FORT EDWARD, N.Y., U.S.A.	SIZE <b>A</b>	ANSI STATION CLASS	<b>ARRESTER</b> <b>9L11ZTA300AS</b>	SHEET 1	CONT ON -
	DRAWN JBC				
ISSUED	DATE 04/14/2011				