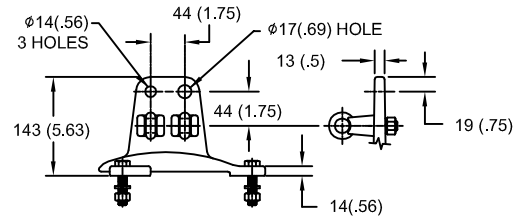


# 274kV MCOV

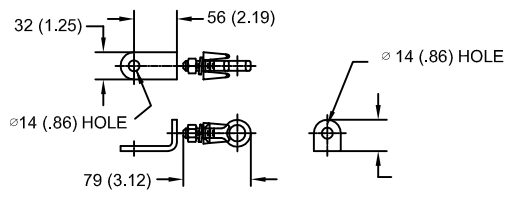
SIZE A	DWG NO 9L11ZTA336AS	SHT 1	REV
REV	DESCRIPTION	DATE	APPROVED

### LINE TERMINAL DETAIL

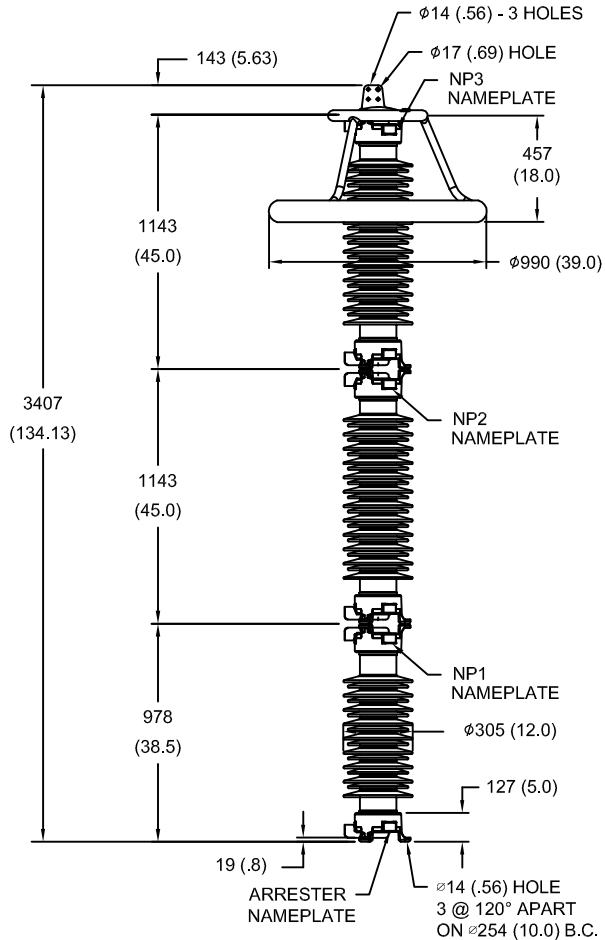


HDG 4-HOLE TERMINAL PAD  
 TWO HDG TERMINALS  
 SUITABLE FOR CU OR AL CONDUCTOR SIZE  
 $\phi$  7 (.25) -  $\phi$  21 (.81) DIA  
 25 - 240 sq mm  
 AWG#4 - 500 MCM

### GROUND TERMINAL DETAIL



HDG TERMINAL BRACKET  
 ONE HDG TERMINAL  
 SUITABLE FOR CU OR AL CONDUCTOR SIZE  
 $\phi$  7 (.25) -  $\phi$  21 (.81) DIA  
 25 - 240 sq mm  
 AWG#4 - 500 MCM



- NOTES:  
 1. DIMENSIONS IN millimeters(inches) SUBJECT TO  $\pm$ 3% TOLERANCE  
 2. CLEARANCE AND INSULATION W/S VOLTAGE APPLY AT SEA LEVEL  
 3. ARRESTER SUITABLE FOR OPERATION AT ALTITUDES UP TO 3500m (11500ft)

CHARACTERISTICS	
RATED VOLTAGE	336 kVrms
MCOV	274 kVrms
MASS	341kg (749lb)
CREEPAGE DISTANCE	8954 (352.5)
LIGHTNING IMP W/S	1374 kV
SWITCHING IMP W/S	1082 kV
POWER FREQ W/S	649 kVrms
TOV 1s	408 kVrms
TOV 10s	390 kVrms
COG ABOVE BASE	1718 (67.6)
HOUSING	GREY PORCELAIN

CANTILEVER FORCE	
MAXIMUM CONTINUOUS	1996 N (449lbf)
ULTIMATE (UMS)	4990 N (1122lbf)

RECOMMENDED CLEARANCE (TO METAL PARTS)	
PHASE TO GROUND	1588 (62.5)
PHASE TO PHASE	1809 (71.2)

DISCHARGE VOLTAGE (kV) FOR INDICATED IMPULSE TYPES AND CURRENT MAGNITUDES							
FRONT OF WAVE	SWITCHING SURGE	8/20 LIGHTNING IMPULSE					
		1.5 kA	3 kA	5 kA	10 kA	20 kA	40 kA
20 kA	2 kA	703	731	756	794	848	933
954	697						

<b>GE ENERGY</b> FORT EDWARD, N.Y., U.S.A.	SIZE <b>A</b>	ANSI STATION CLASS	<b>ARRESTER</b> <b>9L11ZTA336AS</b>	SHEET 1	CONT ON -
	DRAWN JBC				
ISSUED	DATE 04/14/2011	SCALE			

DISTR. TO