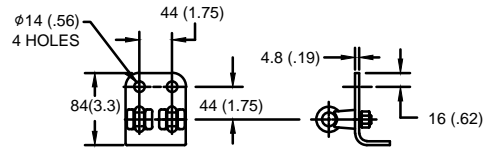


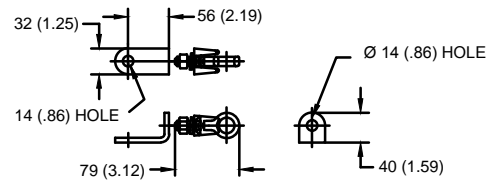
SIZE A	DWG NO 9L12PPAXXS_144kV	SHT 1	REV
REV	DESCRIPTION	DATE	APPROVED
<b>GE Tranquell® XX kV MCOV</b>			

**LINE TERMINAL DETAIL**

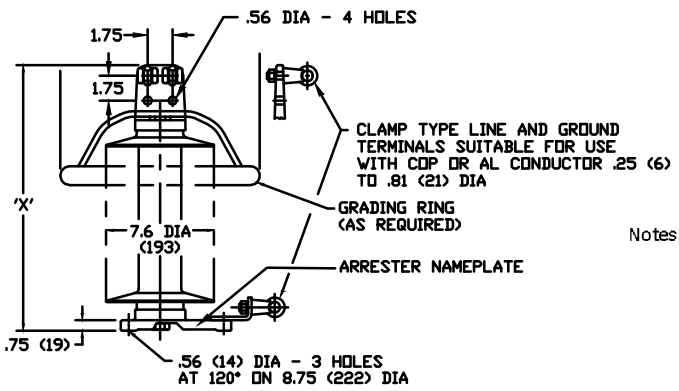


HDG 4-HOLE TERMINAL PAD,  
TWO HDG TERMINALS,  
SUITABLE FOR Cu OR Al CONDUCTOR SIZE  
φ 7 (.25) - φ 21 (.81) DIA  
25 - 240 sq mm  
AWG#4 - 500 MCM

**GROUND TERMINAL DETAIL**



HDG TERMINAL BRACKET  
ONE HDG TERMINAL  
SUITABLE FOR Cu OR Al CONDUCTOR SIZE  
φ 7 (.25) - φ 21 (.81) DIA  
25 - 240 sq mm  
AWG#4 - 500 MCM



- Notes:
- 1) Dimensions subject to +/- 3% tol
  - 2) Application at 0 to 12,000 ft. above sea level
  - 3) Pressure Relief 25 kA RMS
  - 4) Dimensions in parenthesis are in millimeters
  - 5) Ring Diameter:
    - 90 - 98 kV is 14.0 inches diameter
    - 120 - Above kV is 16.5 inches diameter

4Hole NEMA	Duty Cycle (kV) RMS	MCOV (kV) RMS	"X" Dimensions		Leakage		Phase to Phase		Phase to Ground		Weight	
			IN	MM	IN	MM	IN	MM	IN	MM	LBS	KG
9L12PPA090S	90	70	44.0	1117.6	109.0	2768.6	40.0	1016.0	33.0	838.2	52	23.6
9L12PPA096S	96	76	44.0	1117.6	109.0	2768.6	42.0	1066.8	35.0	889.0	53	24.1
9L12PPA108S	108	88	44.0	1117.6	109.0	2768.6	46.0	1168.4	39.0	990.6	54	24.5
9L12PPA120S	120	98	66.5	1689.1	162.0	4114.8	51.0	1295.4	44.0	1117.6	67.5	30.7
9L12PPA132S	132	106	66.5	1689.1	162.0	4114.8	55.0	1397.0	47.0	1193.8	67.5	30.7
9L12PPA144S	144	115	66.5	1689.1	162.0	4114.8	58.0	1473.2	50.0	1270.0	67.5	30.7

<b>GE ENERGY</b> FORT EDWARD, N.Y., U.S.A.	SIZE <b>A</b>	INTERMEDIATE CLASS ARRESTER	<b>ARRESTER</b> <b>9L12PPAXXS_144kV</b>
	DRAWN <b>DCS</b> DATE <b>05/27/2015</b>		
ISSUED	DATE <b>05/27/2015</b>		

DISTR. TO