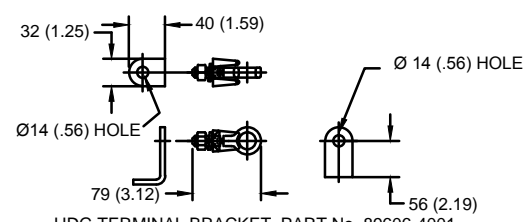


SIZE A	DWG NO 9L12PPBXXXS_72 kV	SHT 1	REV
REV	DESCRIPTION	DATE	APPROVED

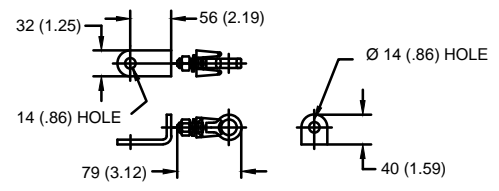
GE Tranquell®  
XX kV MCOV

LINE TERMINAL DETAIL

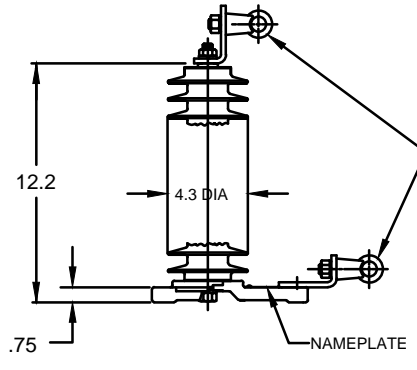


HDG TERMINAL BRACKET, PART No. 89606-4001  
ONE HDG TERMINAL, PART No. 271414-3001  
SUITABLE FOR Cu OR Al CONDUCTOR SIZE  
Ø 7 (.25) - Ø 21 (.81) DIA  
25 - 240 sq mm  
AWG#4 - 500 MCM

GROUND TERMINAL DETAIL

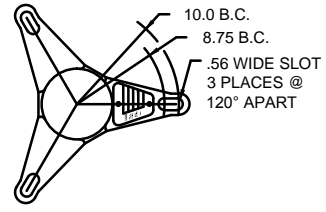


HDG TERMINAL BRACKET  
ONE HDG TERMINAL  
SUITABLE FOR Cu OR Al CONDUCTOR SIZE  
Ø 7 (.25) - Ø 21 (.81) DIA  
25 - 240 sq mm  
AWG#4 - 500 MCM



CLAMP TYPE LINE & GROUND TERMINALS  
SUITABLE FOR USE WITH CU OR AL  
CONDUCTOR .25 TO .81 DIA

- Notes: 1) Dimensions subject to +/- 3% tol  
2) Application at 0 to 12,000 ft. above sea level  
3) Pressure Relief 25 kA RMS  
4) Dimensions in parenthesis are in millimeters



Eyebolt Terminal	Duty Cycle (kV) RMS	MCOV (kV) RMS	"X" Dimensions		Leakage		Phase to Phase		Phase to Ground		Weight	
			IN	MM	IN	MM	IN	MM	IN	MM	LBS	KG
9L12PPB003S	3	2.55	6.8	172.7	15.4	391.2	4.4	111.8	3.3	83.8	6.2	2.8
9L12PPB006S	6	5.1	6.8	172.7	15.4	391.2	4.6	116.8	3.2	81.3	6.2	2.8
9L12PPB009S	9	7.65	6.8	172.7	15.4	391.2	4.7	119.4	3.3	83.8	6.2	2.8
9L12PPB010S	10	8.4	6.8	172.7	15.4	391.2	4.9	124.5	3.5	88.9	6.2	2.8
9L12PPB012S	12	10.2	6.8	172.7	15.4	391.2	4.9	124.5	3.5	88.9	6.2	2.8
9L12PPB015S	15	12.7	12.2	309.9	30.8	782.3	6.2	157.5	4.8	121.9	10.0	4.5
9L12PPB018S	18	15.3	12.2	309.9	30.8	782.3	6.6	167.6	5.2	132.1	10.0	4.5
9L12PPB021S	21	17	12.2	309.9	30.8	782.3	7.6	193.0	6.2	157.5	10.0	4.5
9L12PPB024S	24	19.5	12.2	309.9	30.8	782.3	7.6	193.0	6.2	157.5	10.0	4.5
9L12PPB027S	27	22	17.6	447.0	46.2	1173.5	9.6	243.8	8.2	208.3	13.5	6.1
9L12PPB030S	30	24.4	17.6	447.0	46.2	1173.5	9.8	248.9	8.4	213.4	13.5	6.1
9L12PPB036S	36	29	17.6	447.0	46.2	1173.5	9.8	248.9	8.4	213.4	13.5	6.1
9L12PPB039S	39	31.5	23.0	584.2	61.6	1564.6	12.8	325.1	11.4	289.6	17.0	7.7
9L12PPB045S	45	36.5	23.0	584.2	61.6	1564.6	12.8	325.1	11.4	289.6	17.0	7.7
9L12PPB048S	48	39	23.0	584.2	61.6	1564.6	12.8	325.1	11.4	289.6	17.0	7.7
9L12PPB054S	54	42	28.4	721.4	77.0	1955.8	15.8	401.3	14.4	365.8	19.6	8.9
9L12PPB060S	60	48	28.4	721.4	77.0	1955.8	15.8	401.3	14.4	365.8	19.6	8.9
9L12PPB072S	72	57	33.8	858.5	92.4	2347.0	19.8	502.9	18.4	467.4	23.1	10.5

GE ENERGY  
FORT EDWARD, N.Y., U.S.A.

SIZE  
**A**  
INTERMEDIATE  
CLASS  
ARRESTER

**ARRESTER**  
9L12PPBXXXS\_72 kV

DRAWN DCS DATE 05/27/2015  
ISSUED DATE 05/27/2015

SCALE SHEET 1 CONT ON -

DISTR. TO