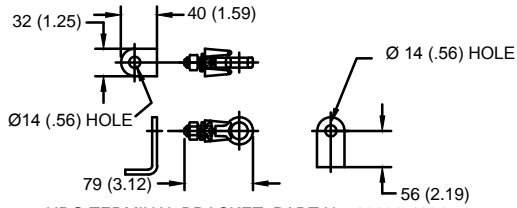


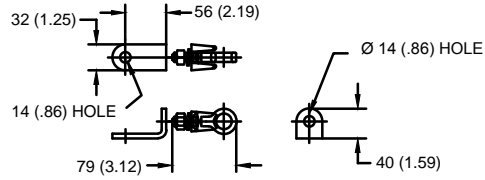
SIZE A	DWG NO 9L12PPBXXXS_90-144 kV	SHT 1	REV
REV	DESCRIPTION	DATE	APPROVED

LINE TERMINAL DETAIL

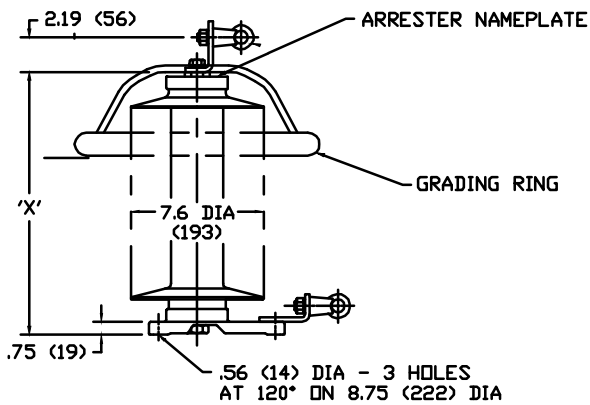


HDG TERMINAL BRACKET, PART No. 89606-4001
 ONE HDG TERMINAL, PART No. 271414-3001
 SUITABLE FOR Cu OR Al CONDUCTOR SIZE
 Ø 7 (.25) - Ø 21 (.81) DIA
 25 - 240 sq mm
 AWG#4 - 500 MCM

GROUND TERMINAL DETAIL



HDG TERMINAL BRACKET
 ONE HDG TERMINAL
 SUITABLE FOR Cu OR Al CONDUCTOR SIZE
 Ø 7 (.25) - Ø 21 (.81) DIA
 25 - 240 sq mm
 AWG#4 - 500 MCM



- Notes:
- 1) Dimensions subject to +/- 3% tol
 - 2) Application at 0 to 12,000 ft. above sea level
 - 3) Pressure Relief 25 kA RMS
 - 4) Dimensions in parenthesis are in millimeters
 - 5) Grading Ring Diameter:
 90 - 98 kV is 14.0 inches
 120 - Above kV is 16.5 inches

Eyebolt Terminal	Duty Cycle (kV) RMS	MCOV (kV) RMS	"X" Dimensions		Leakage		Phase to Phase		Phase to Ground		Weight	
			IN	MM	IN	MM	IN	MM	IN	MM	LBS	KG
9L12PPB090S	90	70	44.0	1117.6	109.0	2768.6	40.0	1016.0	33.0	838.2	52	23.6
9L12PPB096S	96	76	44.0	1117.6	109.0	2768.6	42.0	1066.8	35.0	889.0	53	24.1
9L12PPB108S	108	88	44.0	1117.6	109.0	2768.6	46.0	1168.4	39.0	990.6	54	24.5
9L12PPB120S	120	98	66.5	1689.1	162.0	4114.8	51.0	1295.4	44.0	1117.6	67.5	30.7
9L12PPB132S	132	106	66.5	1689.1	162.0	4114.8	55.0	1397.0	47.0	1193.8	67.5	30.7
9L12PPB144S	144	115	66.5	1689.1	162.0	4114.8	58.0	1473.2	50.0	1270.0	67.5	30.7



GE ENERGY
 FORT EDWARD, N.Y., U.S.A.

SIZE
A

INTERMEDIATE
 CLASS
 ARRESTER

ARRESTER

9L12PPBXXXS_90-144 kV

DRAWN DCS DATE 05/27/2015

ISSUED DATE 05/27/2015

SCALE

SHEET 1 CONT ON -

DISTR. TO