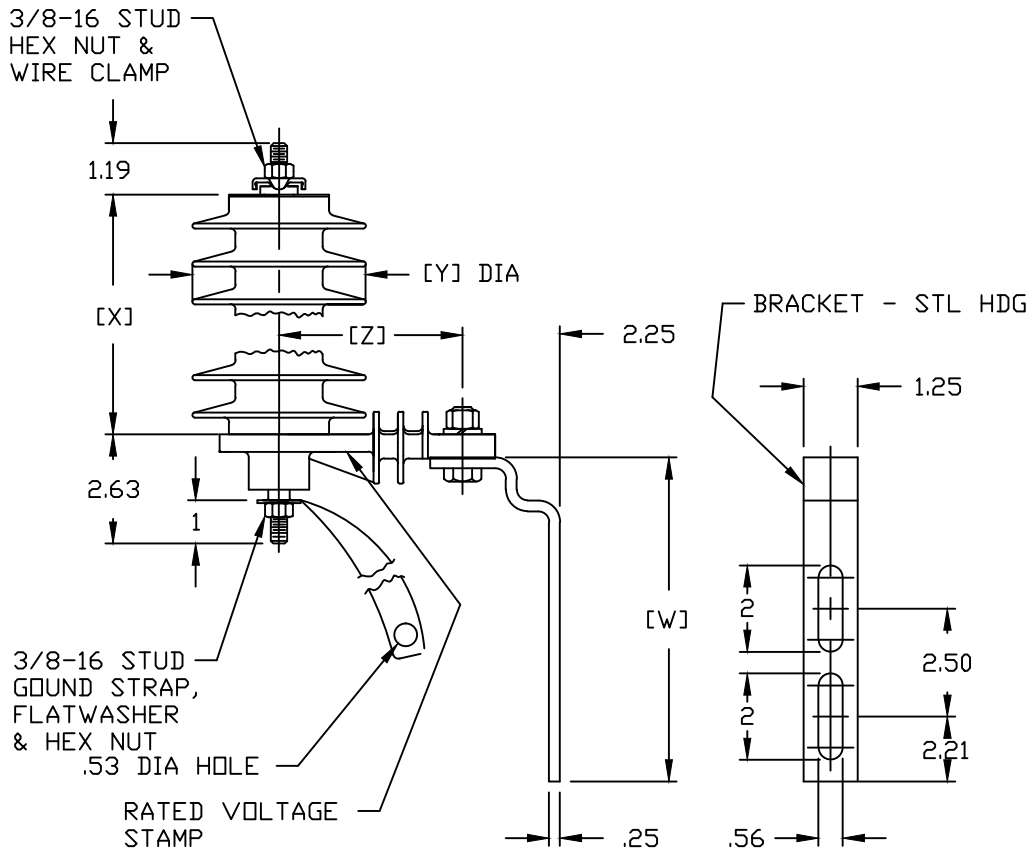


SIZE A	DWG NO 9L20AFX0**/AXX0**/AHX0**BHS	SHT	REV 1
REV 1	DESCRIPTION UPDATE	DATE 12/28/2015	APPROVED D SEYMOUR

NOTES:

1. DIMENSIONS SUBJECT TO +/- 3% TOLERANCE
2. GROUND STRAP ON 9L20AFX0\*\*BHS (12kV TO 36kV RATED)
3. GROUND STRAP ON 9L20AHX0\*\*BHS (3kV TO 10kV RATED)
4. 9L20AXX0\*\*BHS (3kV TO 36kV RATED)



Rated	MCOV	8/20 10kA IR	Creep		Mounting Center to Center		Weight (unit only)		[X] Dimension		[Y] Dimension		[Z] Dimension		[W] Dimension	
			in	mm	in	mm	lbs	kg	in	mm	in	mm	in	mm	in	mm
3	2.55	9.9	8.5	216	5	127	2.9	1.32	3.0	76	4.1	104	4.25	108	11	279
6	5.1	19.8	11.3	287	5.4	137	3.3	1.5	3.8	96	4.1	104	4.25	108	11	279
9	7.65	29	14.4	366	6	152	3.8	1.72	4.9	124	4.1	104	4.25	108	11	279
10	8.4	31.6	14.4	366	6.2	157	3.8	1.72	4.9	124	4.1	104	5	127	11	279
12	10.2	37.6	17	432	7.5	191	4.3	1.95	5.4	137	4.1	104	5	127	7	178
15	12.7	47.8	25.2	640	8.5	216	5.6	2.54	7.8	198	4.1	104	5	127	7	178
18	15.3	56.4	25.2	640	9.5	241	5.6	2.54	7.8	198	4.1	104	5	127	7	178
21	17	63.5	28.1	714	10	254	6.2	2.81	8.6	218	4.1	104	6	152	7	178
24	19.5	76.2	36.5	927	12	305	8.3	3.76	11.5	292	4.1	104	6	152	7	178
27	22	85.5	39.6	1006	13	330	8.7	3.95	12.6	320	4.1	104	6	152	7	178
30	24.4	94	42.2	1072	14	356	9.2	4.17	13.1	332	4.1	104	6	152	7	178
36	29	112.9	50.4	1280	16.5	419	10.3	4.67	15.5	393	4.1	104	6	152	7	178



GE ENERGY  
FORT EDWARD, N.Y., U.S.A.

SIZE

A

DISTRIBUTION

ARRESTER

9L20AFX0\*\*/AXX0\*\*/AHX0\*\*BHS

DRAWN D SEYMOUR DATE 12/28/15

ISSUED DATE 12/28/15

SCALE

SHEET 1 CONT ON -

DISTR. TO