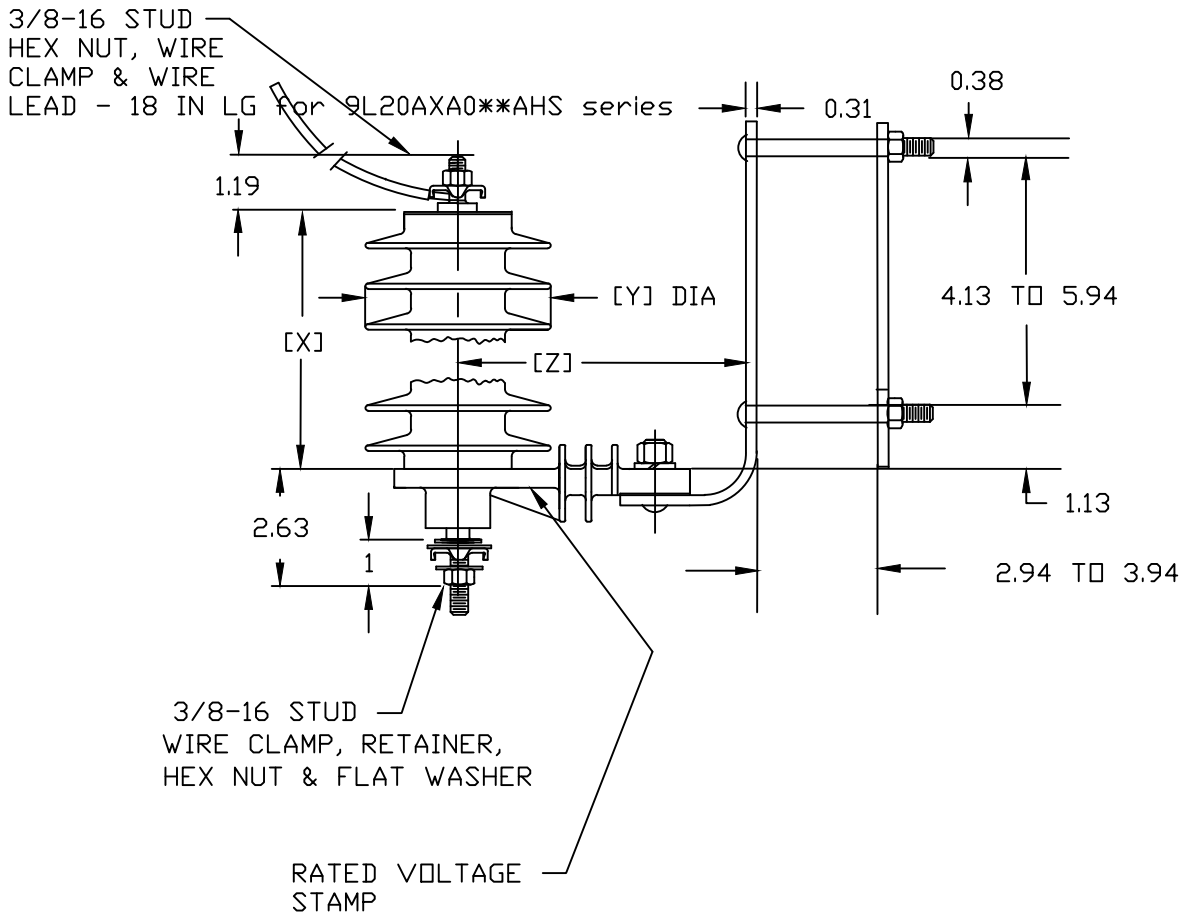


SIZE	DWG NO 9L20AXA0/AXX0 AHS	SHT 1	REV
REV	DESCRIPTION	DATE	APPROVED
			JBC

NOTES:

1. DIMENSIONS SUBJECT TO +/- 3% TOLERANCE
2. 9L20AXA0**AHS HAS 18" LINE LEAD (3kV TO 36kV RATED)
3. 9L20AXX0**AHS (3kV TO 36kV RATED)



Voltage kV rms	MCOV kV rms	Creep		Strike		"X" Height		"Y" Dimension		"Z" Dimension		Mounting Clearance				Weight			
		in	mm	in	mm	in	mm	in	mm	in	mm	in	mm	in	mm	lbs	kgs	lbs	kgs
3	2.55	8.5	216	3.8	97	3	76	4.1	104	5	127	5	127	3	76	2.9	1.3	5.4	2.5
6	5.1	11.3	287	4.6	117	3.8	96	4.1	104	5	127	5.4	137	3.4	86	3.3	1.5	5.8	2.6
9	7.65	14.4	366	5.7	145	4.9	124	4.1	104	5	127	6	152	4	102	3.8	1.7	6.3	2.9
10	8.4	14.4	366	5.7	145	4.9	124	4.1	104	5	127	6.2	157	4.2	107	3.8	1.7	6.3	2.9
12	10.2	17	432	6.6	168	5.4	137	4.1	104	5	127	7.5	191	5.5	140	4.3	1.9	6.8	3.1
15	12.7	25.2	640	8.8	223	7.8	198	4.1	104	5	127	8.5	216	6.5	165	5.6	2.5	8.1	3.7
18	15.3	25.2	640	8.8	223	7.8	198	4.1	104	5	127	9.5	241	7.5	191	5.6	2.5	8.1	3.7
21	17	28.1	714	9.7	246	8.6	218	4.1	104	6	152	10	254	8	203	6.2	2.8	8.7	4
24	19.5	36.5	927	12.4	315	11.5	292	4.1	104	6	152	12	305	10	254	8.3	3.8	10.8	4.9
27	22	39.6	1006	13.4	340	12.6	320	4.1	104	6	152	13	330	11	279	8.7	4	11.3	5.1
30	24.4	42.2	1072	14	356	13.1	332	4.1	104	6	152	14	356	12	305	9.2	4.2	11.7	5.3
36	29	50.4	1280	16.2	411	15.5	393	4.1	104	6	152	16.5	419	14.5	368	10.3	4.7	12.8	5.8

GE ENERGY FORT EDWARD, N.Y., U.S.A.	SIZE A	DISTRIBUTION CLASS	ARRESTER 9L20AXA0**/AXX0** AHS
	DRAWN D SEYMOUR		
ISSUED	DATE	SCALE	SHEET 1 CONT ON -

DISTR. TO