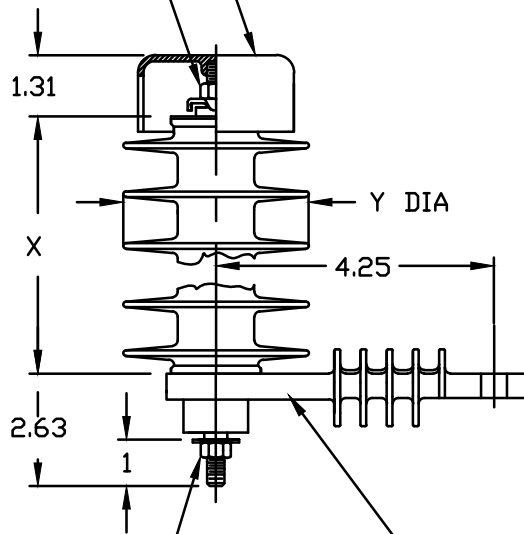


SIZE A	DWG NO 9L27HXX4**XHS	SHT 1	REV
REV	DESCRIPTION	DATE	APPROVED

PROTECTIVE CAP
.64 WIDE SLOT
3/8-16 STUD
HEX NUT &
WIRE CLAMP



VOLTAGE	DIM
kV	Y
4 - 12	4.0
15 - 36	5.0

3/8-16 STUD
HEX NUT, FLATWASHER
& GROUND STRAP

RATED VOLTAGE
STAMP

** DENOTES VOLTAGE IN KV.



GE ENERGY
FORT EDWARD, N.Y., U.S.A.

SIZE

A

RISER
POLE

ARRESTER
9L27HXX4**XHS

DRAWN DCS DATE 6/1/2015

ISSUED DATE 6/1/2015

SCALE

SHEET 1 CONT ON -

DISTR. TO