

TRANQUEL Surge Protective Device

CAUTION: THE EQUIPMENT COVERED BY THIS INSTRUCTION SHOULD BE INSTALLED AND SERVICED ONLY BY COMPETENT PERSONNEL FAMILIAR WITH GOOD SAFETY PRACTICES. THIS INSTRUCTION IS WRITTEN FOR SUCH PERSONNEL AND IS NOT INTENDED AS A SUBSTITUTE FOR ADEQUATE TRAINING AND EXPERIENCE IN SAFE PROCEDURES FOR THIS TYPE OF EQUIPMENT.

NOTE: THIS DEVICE SHOULD BE INSTALLED IN ACCORDANCE WITH ALL APPLICABLE LOCAL AND NATIONAL ELECTRICAL CODES.

CAUTION: FIRST REMOVE ALL SOURCE OF POWER AT THE POINT OF INSTALLATION. INSTALL TEMPORARY GROUNDS TO THE LINES AT THE POINTS OF INSTALLATION. OTHERWISE ELECTRICAL SHOCK MAY OCCUR, CAUSING SEVERE PERSONAL INJURY.

CAUTION: UNGROUNDED POWER SYSTEMS ARE INHERENTLY UNSTABLE AND CAN PRODUCE EXCESSIVELY HIGH LINE-TO-GROUND VOLTAGES DURING CERTAIN FAULT CONDITIONS. DURING THESE FAULT CONDITIONS ANY ELECTRICAL EQUIPMENT, INCLUDING AN SPD, MAY BE SUBJECT TO VOLTAGES THAT EXCEED THEIR DESIGN RATINGS. THIS INFORMATION IS BEING PROVIDED TO THE USER SO THAT AN INFORMED DECISION CAN BE MADE BEFORE INSTALLING ANY ELECTRICAL EQUIPMENT ON AN UNGROUNDED POWER SYSTEM.

INSTALLATION

The TRANQUEL Surge Protective Device is designed to protect an electrical system and equipment from damage due to excessive line surges caused by lightning or other circuit disturbances. This device incorporates thermal overload protection as well as short circuit fault protection. This family of Surge Protective Devices is UL Listed per UL1449 Fourth Edition for Type 1 applications and complies with ANSI standard C62.11. It can also be used for Type 2 applications when a 20 amp fuse (not included with this product) is also installed.

The SPD is available in a one-pole, two-pole, or three-pole version, and is suitable for both indoor and outdoor use.

Each SPD is permanently sealed in NEMA 4X housing. If damaged the device must be replaced, there is no repair.

Catalog Number	Voltage (V ac)	Phase	Freq (Hz)	Mode	MCOV	In (A)	SCCR (A)	# Poles	# wires	Wiring diagram
9L15KCA001	480	1	50/60	L-G	300	20k	200k	1	3	2
9L15JCD001	120	1	50/60	L-G	150	20k	200k	1	3	8
9L15JCB001	120/240	1S	50/60	L-L (L-N)	550 (275)	20k	200k	2	3	2
9L15JCA001	240	1	50/60	L-G	300	20k	200k	1	3	8
9L15KCB001	480	2	50/60	L-L (L-G)	1100 (550)	20k	200k	3	3	6
9L15KCC001	480	3D	50/60	L-L (L-G)	1100 (550)	20k	200k	3	4	4, 5 & 7
9L15JCC001	277/480	3Y	50/60	L-L (L-N)	640 (320)	20k	200k	3	4	3
9L15LCB001	600	2	50/60	L-L (L-G)	1320 (660)	20k	200k	2	3	6
9L15LCC001	600	3D	50/60	L-L (L-G)	1320 (660)	20k	200k	3	4	4, 5 & 7

These instructions do not purport to cover all details or variations in equipment nor to provide for every possible contingency to be met in connection with installation, operation, or maintenance. Should further information be desired or should particular problems arise which are not covered sufficiently for the purchaser's purposes, the matter should be referred to GE Energy.

GEH-4982E, TRANQUEL Surge Protective Device

Installation instructions:

1. Confirm System voltage to SPD voltage. The measured voltage should match the nominal operating voltage of the product and must not exceed the maximum operating voltage (MCOV). In case of doubt concerning application, consult your local GE company representative.
2. Remove all sources of power at the point of installation. Install temporary ground to the lines at the point of installation.
3. Determine adequate location for SPD and the mounting method. Locate SPD as close to panel or equipment to minimize lead lengths. Position SPD such that LED indication is best visible. Weather resistant application requires additional sealing at nipple.
4. Connection wires should be cut to minimum possible length. The wires should not form coils or loops.
5. Make sure system is bonded per National and Local codes and is clear of hazards of faults before energizing.
6. Energize SPD and verify the operation of LED indicator. Each LED should green illuminate.

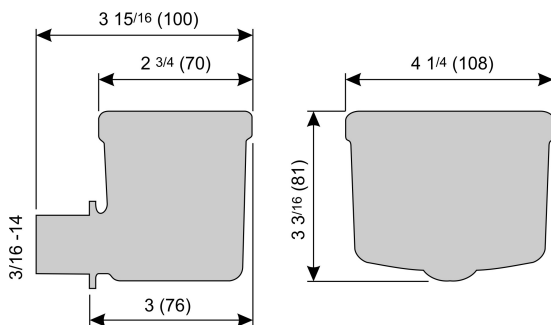
LED operations:

Illumination of the green LED indicates protected status. Each line has separate LED indication. If one or more green LED extinguishes, SPD maintains its load power, but on an unprotected status. Check the power connection and overcurrent protection device, if present. If the LED indication status doesn't change, the SPD should be replaced.

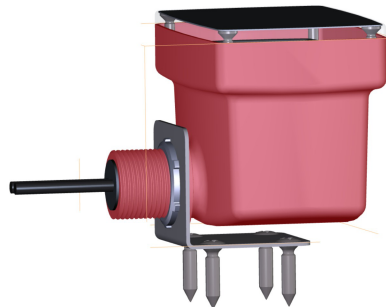
Operating temperature range: -35°C to 80°C (-31°F to 176°F)

The Tranquell SPDs are supplied with 3' (1 m) of 12AWG leads for a direct hardwired connection.

Product Dimensions:



Mounting option by Bracket:



GEH-4982E, TRANQUEL Surge Protective Device

