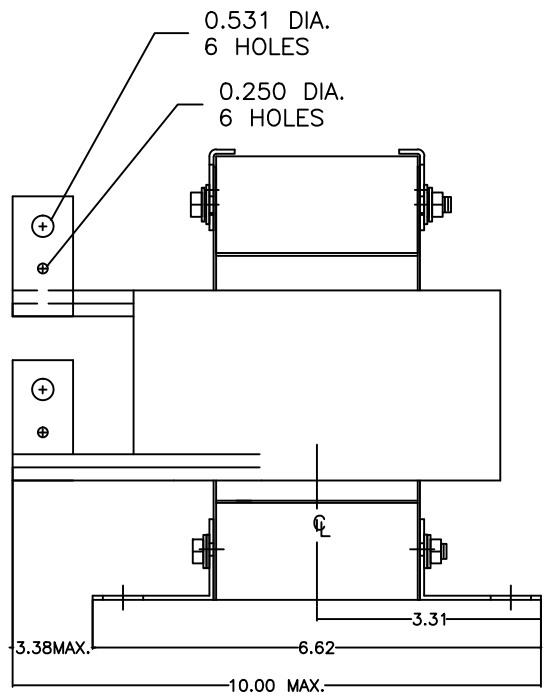
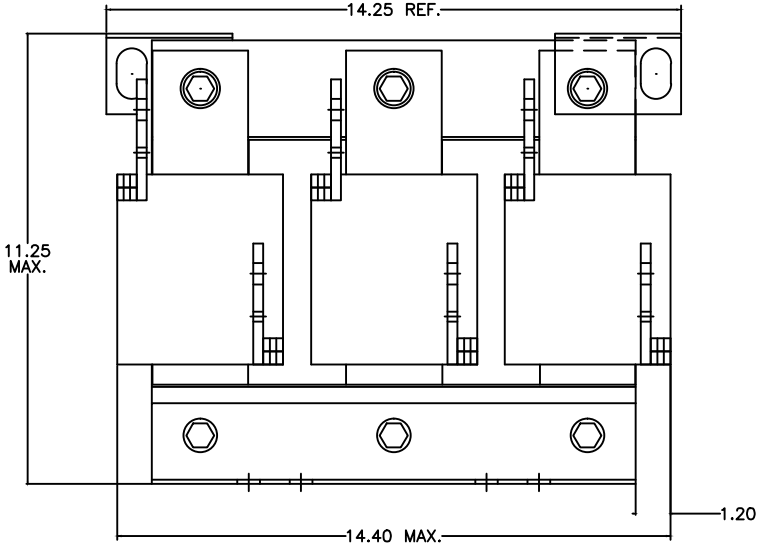
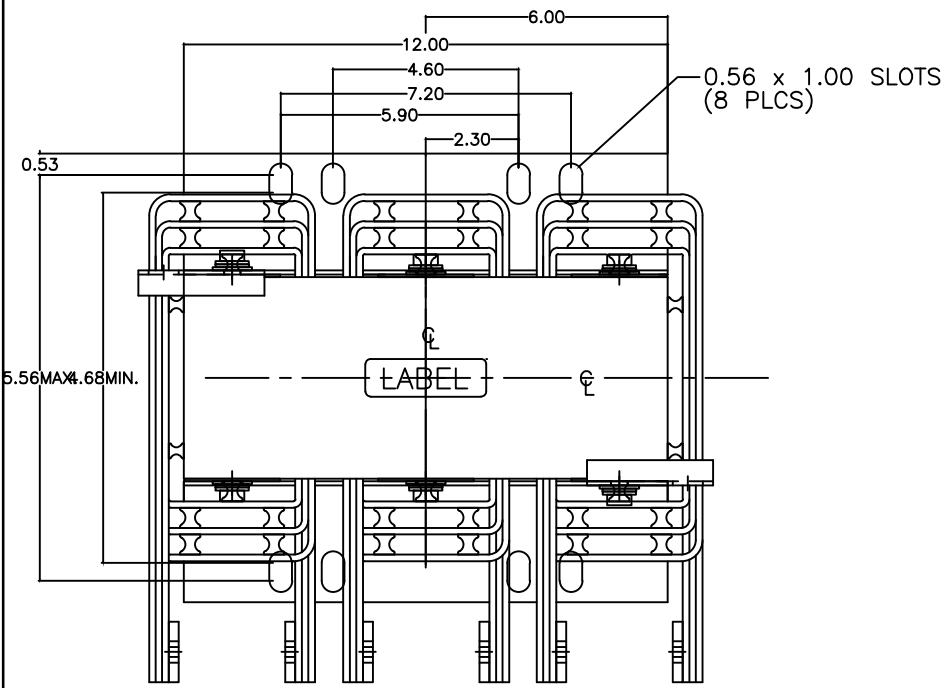


SIZE A	DWG NO 37G60001	SHT 1	REV
REV	DESCRIPTION	DATE	APPROVED

3 Phase Line/Load Reactor
OPEN FRAME



** ALSO AVAILABLE IN NEMA 1 ENCLOSURE

INDUCTANCE	WATTS LOSS	FUND. AMPS	MAX. AMPS	WEIGHT (LBS)
0.020 mH	307.0	600.0	900.0	120

GE GRID SOLUTIONS CLEARWATER, FL	SIZE A	LV LINE REACTOR 37G60001
	DRAWN DCS DATE 1/25/2017 ISSUED DATE 1/25/2017	
SHEET 1 CONT ON -		