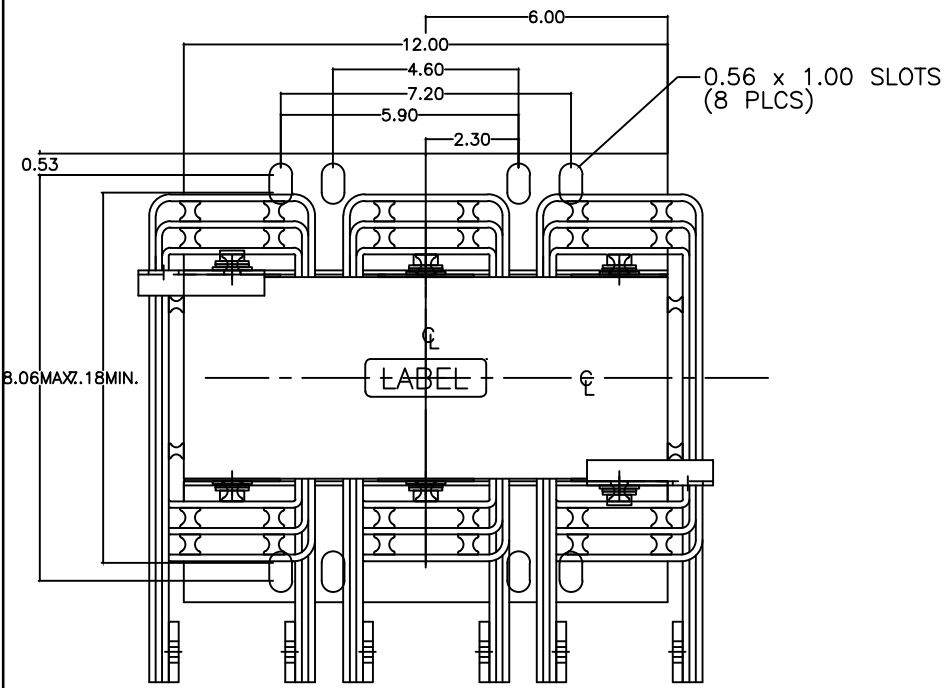
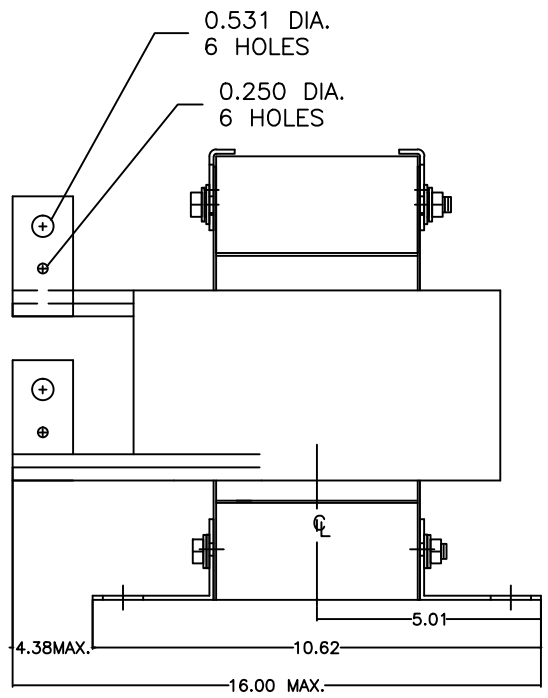
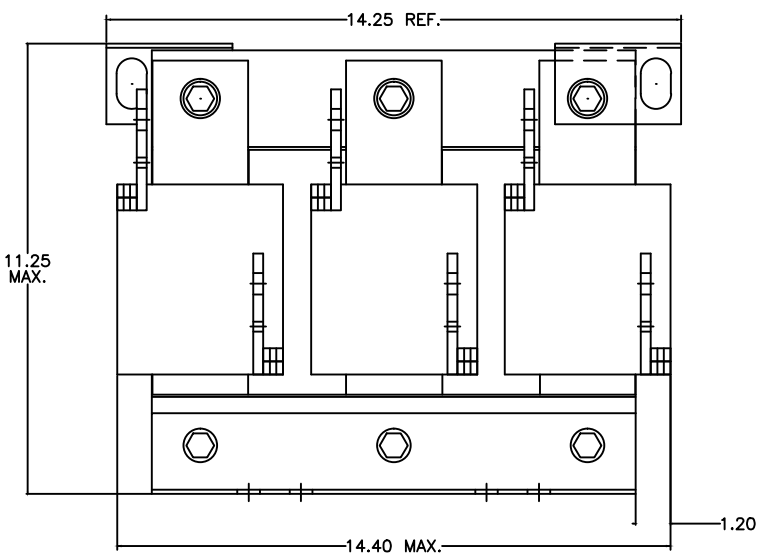


SIZE A	DWG NO 37G60003	SHT 1	REV
REV	DESCRIPTION	DATE	APPROVED

3 Phase Line/Load Reactor
OPEN FRAME



NOTE:
CENTER LINE REPRESENTS
CENTER OF REACTOR CORE



** ALSO AVAILABLE IN NEMA 1 ENCLOSURE

INDUCTANCE	WATTS LOSS	FUND. AMPS	MAX. AMPS	WEIGHT (LBS)
0.1 mH	406.0	600.0	900.0	270

GE GRID SOLUTIONS CLEARWATER, FL	SIZE A	LV LINE REACTOR 37G60003	
	SCALE		
DRAWN DCS DATE 1/25/2017 ISSUED DATE 1/25/2017		SHEET 1	CONT ON -