

INSTRUCTIONS

GEK-24941B

20 VOLT POWER SUPPLY CARD

193X257AAG01

These instructions do not purport to cover all details or variations in equipment nor to provide for every possible contingency to be met in connection with installation, operation or maintenance. Should further information be desired or should particular problems arise which are not covered sufficiently for the purchaser's purposes, the matter should be referred to General Electric Company.

GENERAL  **ELECTRIC**

INSTRUCTION

**20 Volt Power Supply Card
193X257AAG01**

If trouble is suspected in this card, remove all loads connected to the +20 and -20 volt outputs and all loads connected to tabs 8 and 26 prior to concluding the card is defective.

GENERAL

This instruction provides the basic information required to start up and troubleshoot the subject card. Refer to the system diagrams to determine how the card has been used in the overall system.

DESCRIPTION

The 20 volt Power Supply Card in conjunction with a transformer and power supply rectifier provides regulated +20V DC and -20V DC to operate other printed circuit cards and assemblies.

- 1) Each output is factory trimmed to 20V \pm .1 volt and will provide up to 750 mA of current.
- 2) The outputs are individually fused to protect the card against overload.
- 3) Individual overvoltage circuits are furnished which will momentarily short the outputs to zero, forcing the fuses to open, whenever excessive voltage appears at the outputs.
- 4) The card is designed such that if one of the fuses opens, the overvoltage circuit on the other side will force the other fuse to open.
- 5) Two spare fuses are provided.
- 6) Test posts which are connected to the outputs through a 15K ohm resistor are provided to monitor the output voltage.

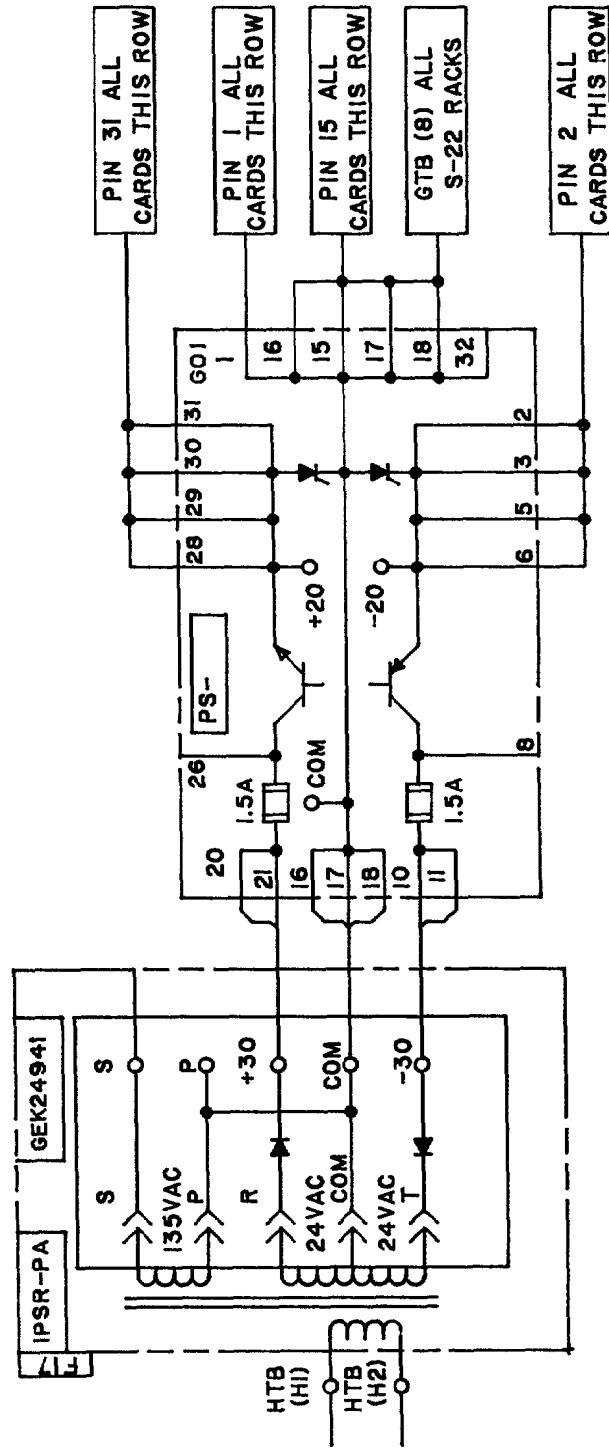
START—UP/CHECKOUT

There are no adjustments on this card.

TROUBLESHOOTING

The normal voltage conditions are as follows:

Tabs 10, 11	-22 to -45V DC	Unregulated Input
Tabs 20, 21	+22 to +45V DC	Unregulated Input
Tabs 2, 3, 5, 6	-19.0 to -20.1V DC	No load to full load
Tabs 28, 29, 30, 31	+19.9 to +20.1V DC	No load to full load

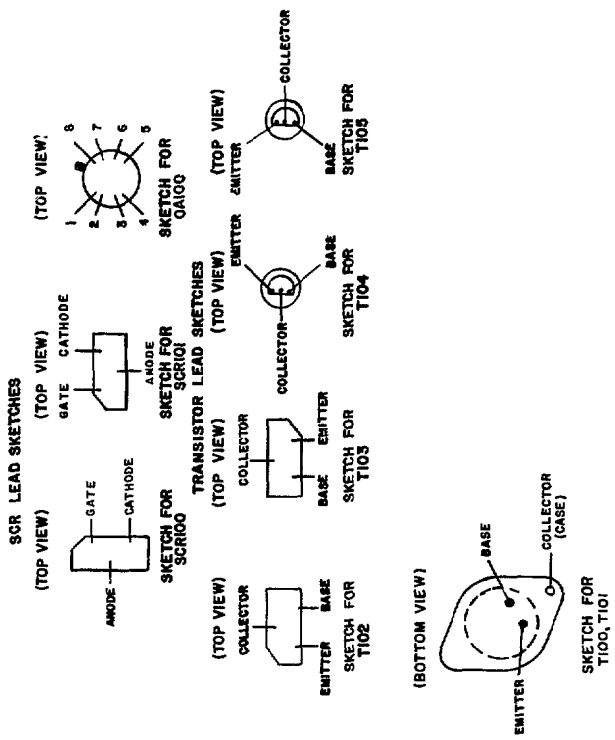


HOLE TABULATION
 ALL HOLES .040 DIA. EXCEPT
 THE HOLES TABULATED BELOW

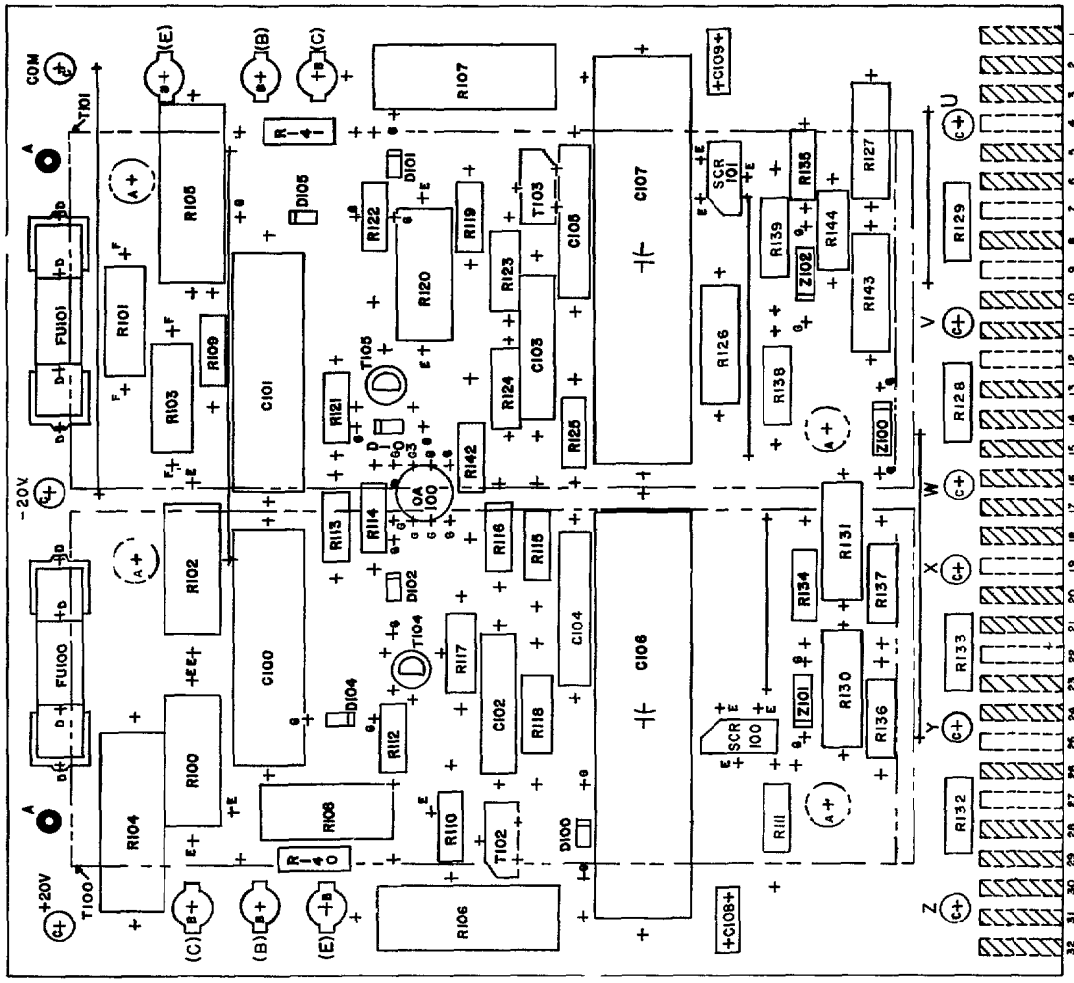
LOC	DIA	QUAM
A	.157	6
B	.101	6
C	.081	9
D	.078	8
E	.062	14
F	.052	4
G	.032	26

NOTES

- INDICATED TAB NUMBERS CORRESPOND TO MATCHING RECEPTACLE NUMBERS
- CROSS HATCHED TABS INDICATES TABS USED.
- CARD SIZE, 5.500" X 5.130" X .002



2X	36A363740AB004	FRONT ETCHED BOARD DWS.	FRONT	2	BACK
		REAR ETCHED BOARD DWS.	SPACE UNIT REQUIREMENT		



SEE NOTE 162

GROUP	KEY LOCATIONS
01	6-7 12-13 26-27

H. J. Havlicek (2)

GENERAL ELECTRIC COMPANY
SPEED VARIATOR PRODUCTS OPERATION
ERIE, PENNSYLVANIA 16531

GENERAL  ELECTRIC

GEK-24941B (5/81) 1M (P)