



AUXILIARY RELAY

TYPE HAA

MODEL 0208A8263

INTRODUCTION

These instructions plus those included in GEK-7354 form the instructions for this relay.

DESCRIPTION

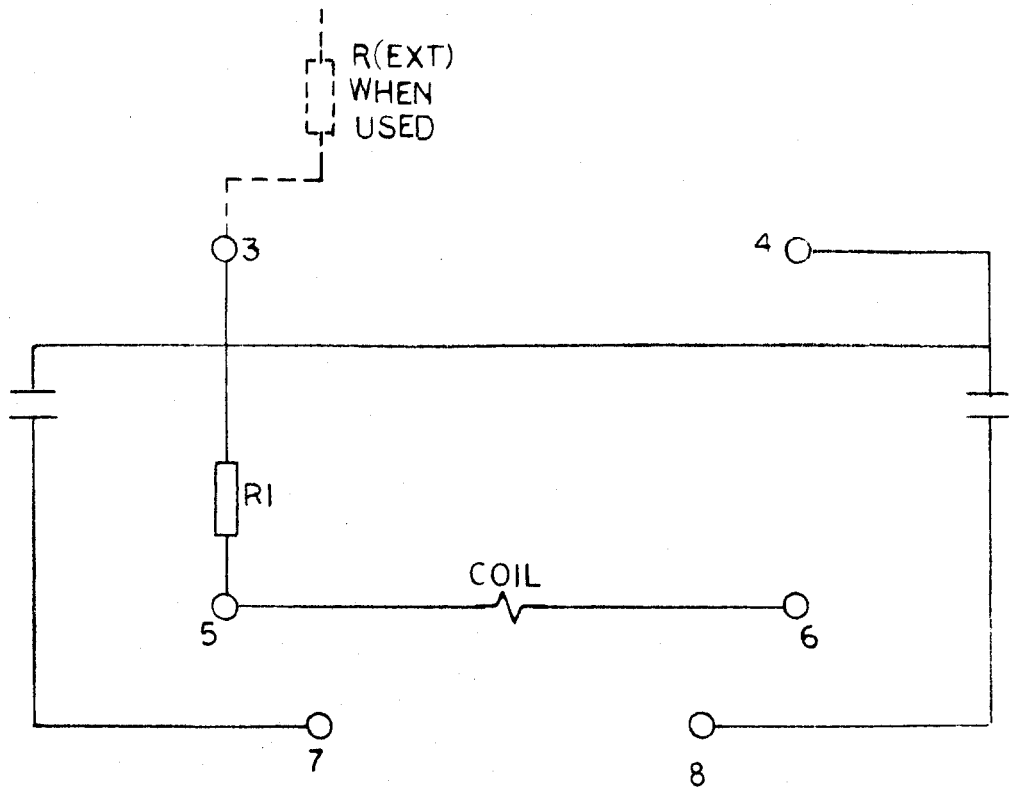
Special relay 0208A8263 is a D.C. operated auxiliary relay consisting of a target unit and resistor mounted in a molded case. Some forms of this relay are supplied with an external resistor. The relay has two normally open contacts. Special relay 0208A8263 is similar to model HAA16B described in GEK-7354 except it is intermittently rated for use at higher than usual D.C. voltages such as are seen with capacitor trip devices. The relay and associated external resistor will withstand its intermittent voltage rating for one minute.

The table below gives the ratings for the various forms of this relay.

MODEL	D.C. VOLTS INTERMITTENT	D.C. VOLTS CONTINUOUS	EXTERNAL RESISTOR
0208A8263G1	340	250	IC9006C101A1650

These instructions do not purport to cover all details or variations in equipment nor to provide for every possible contingency to be met in connection with installation, operation or maintenance. Should further information be desired or should particular problems arise which are not covered sufficiently for the purchaser's purposes, the matter should be referred to the General Electric Company.

To the extent required the products described herein meet applicable ANSI, IEEE and NEMA standards; but no such assurance is given with respect to local codes and ordinances because they vary greatly.



VOLTS DC INTERMITTENT	VOLTS DC CONT	OHMS		
		COIL	RI	R (EXT)
340	250	95	350	1650

* Fig. 1 (0246A6828 [1]) Internal Connections Diagram

* Revised since last issue